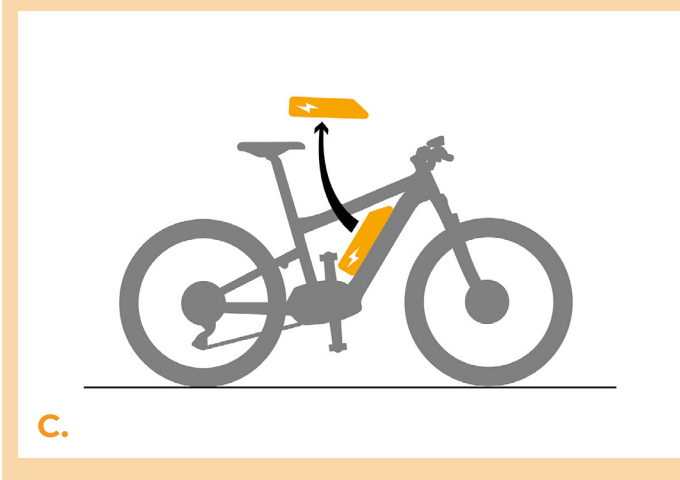
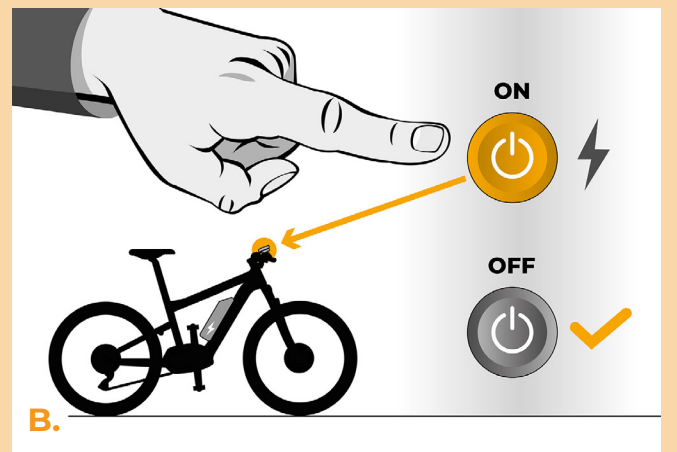
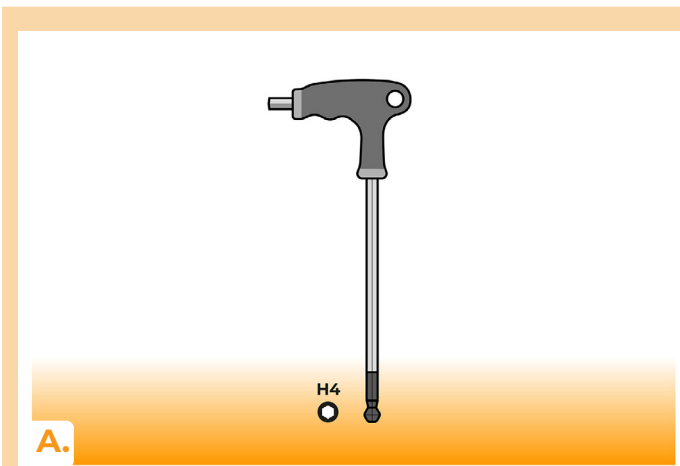


SpeedBox 1.0 B.Tuning for Bosch (Smart System)

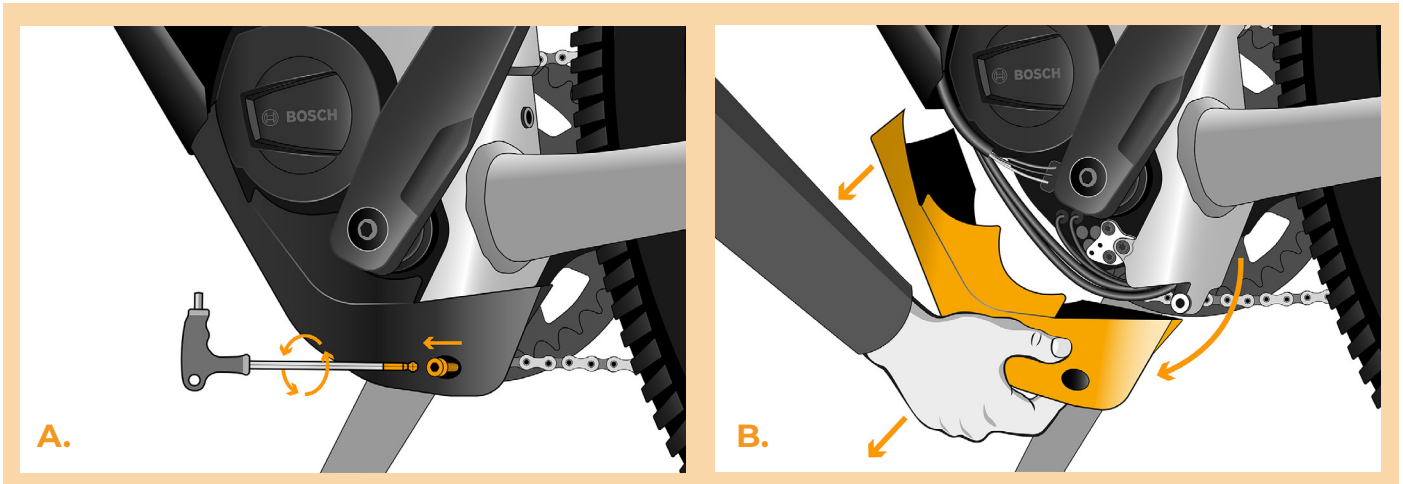
STEP 1: Preparation for installation

- A. Prepare the following tools: Hex Key H4
- B. Turn off the e-bike.
- C. Remove the battery from the e-bike according to the manufacturer's manual.



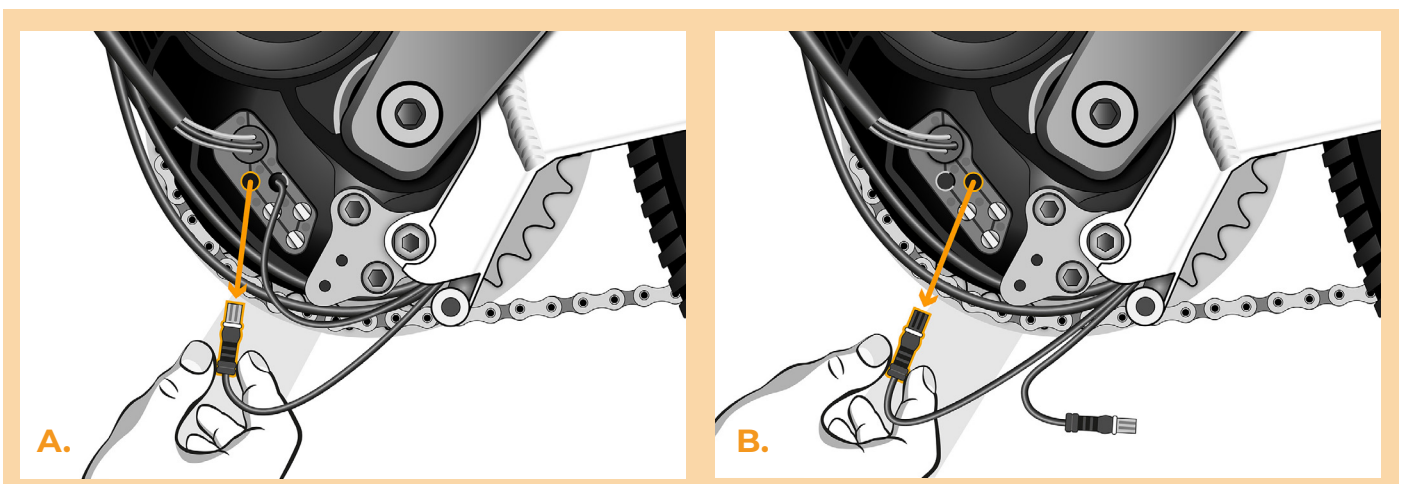
STEP 2: Motor cover removal

- A. Unscrew the screw holding the motor cover with the hex key H4.
- B. Remove the motor cover.



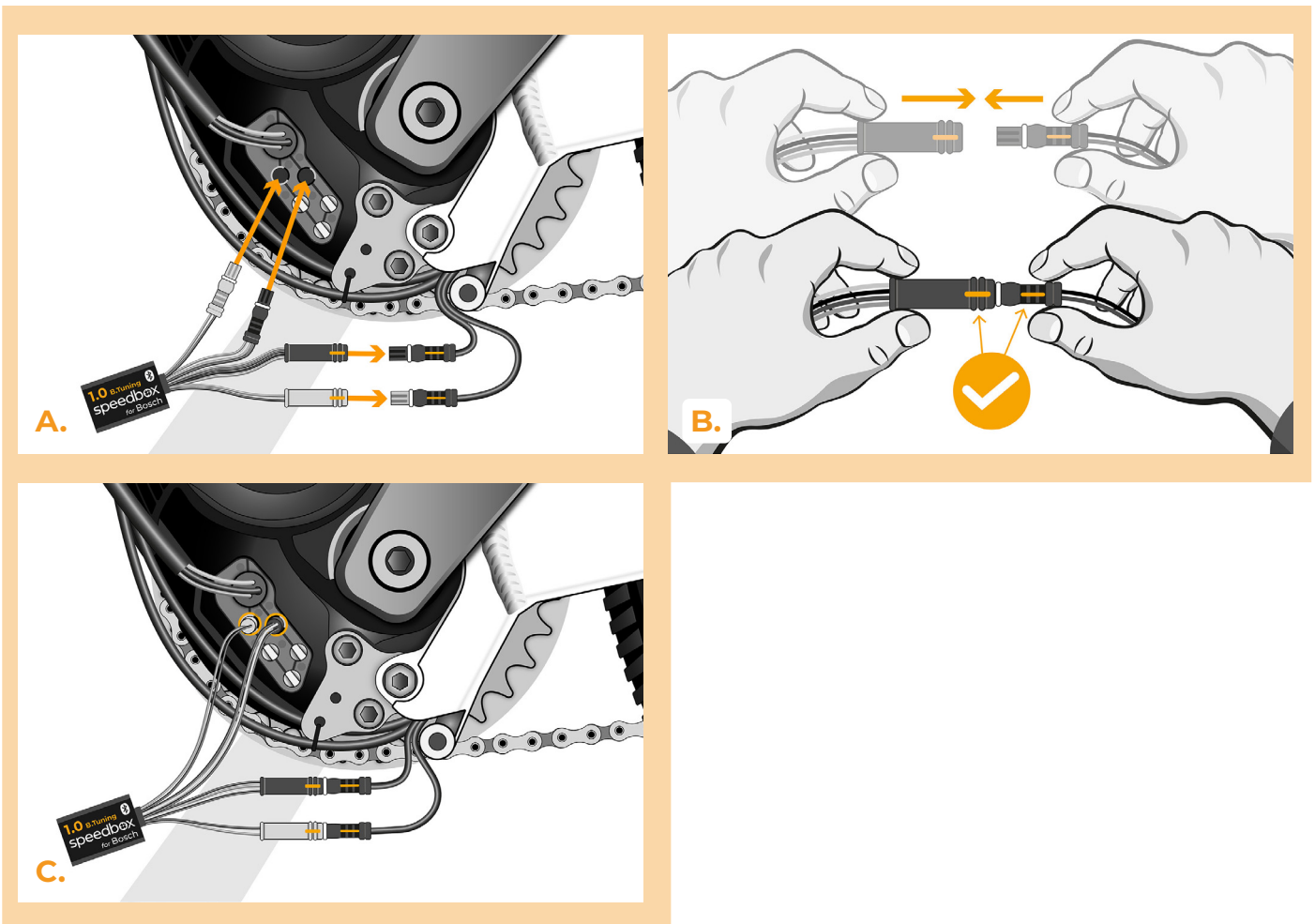
STEP 3: Disconnecting the connectors from the motor

- A. Disconnect the speed sensor connector.
- B. Disconnect the display connector in the same manner.



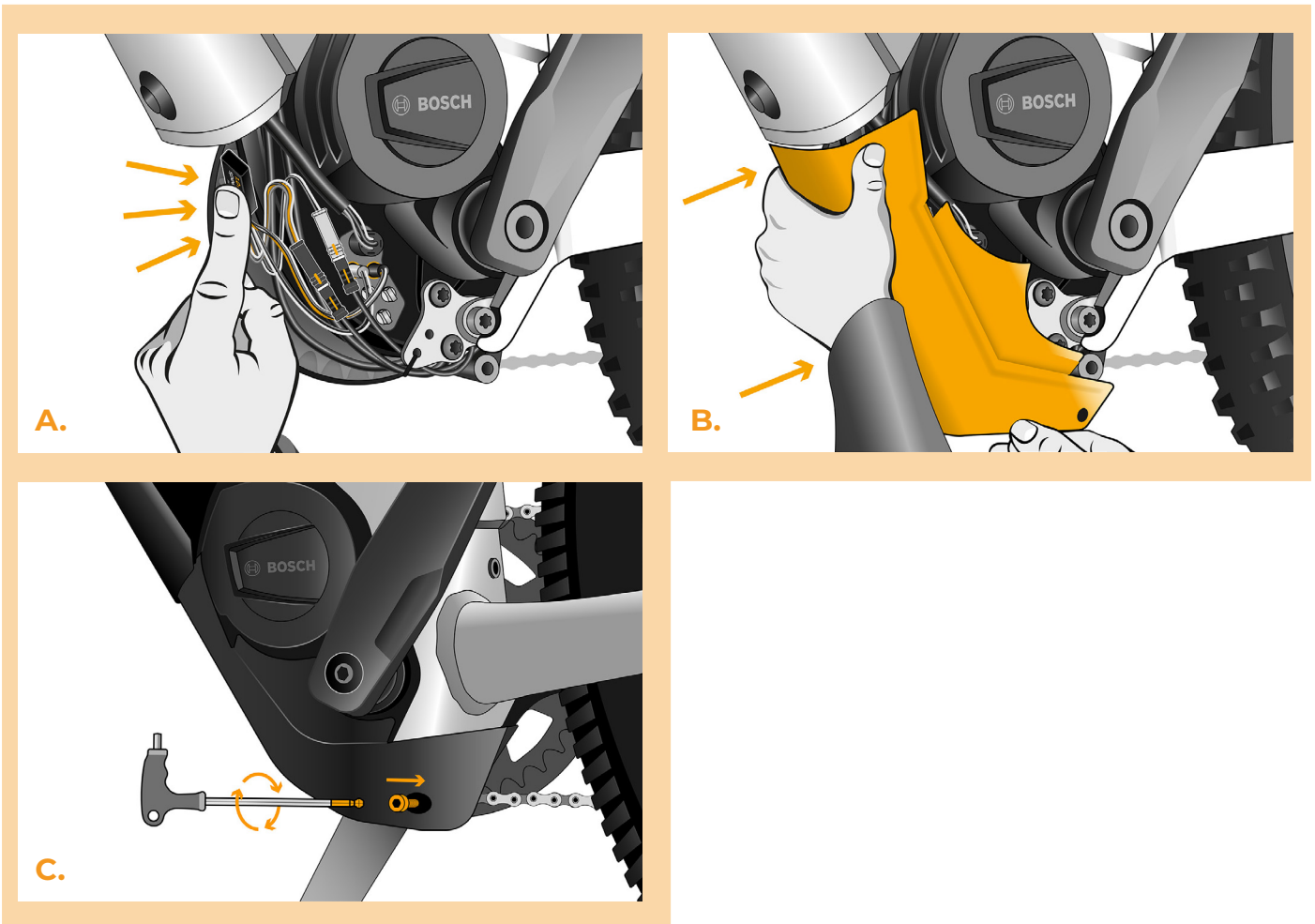
STEP 4: SpeedBox tuning installation

- A.** Replace the original connectors with the SpeedBox connectors.
- B.** Plug the e-bike connectors, disconnected from the motor (step 3), into the SpeedBox connectors. Make sure that the locks on the connectors are seated properly.
- C.** Before assembling the motor, check the correct wiring as shown in the figure.



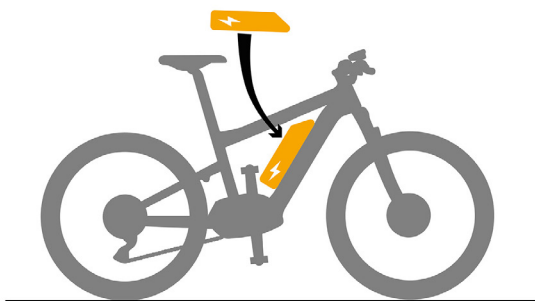
STEP 5: Motor cover assembly

- A.** Fit the SpeedBox and all connectors and wires leading from the motor into the free space in the motor.
- B.** Place the motor cover back to its original position.
- C.** Reattach the motor cover by tightening the screw with the hex key H4.

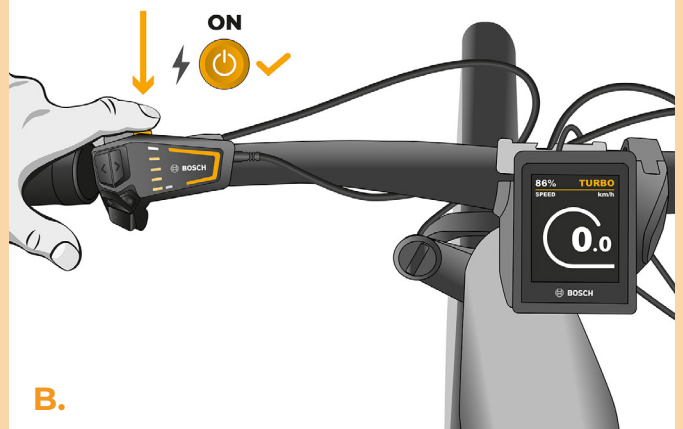


STEP 6: Tuning function check

- A.** Place the battery back into the e-bike.
- B.** Turn the e-bike on.
- C.** Before the first ride with SpeedBox installed, it is necessary to enter the menu and check the wheel circumference: "Settings" > "My Bike" > "Wheel circumference". Then return to the home screen.
- D.** Activate/deactivate tuning by brief activation of the WALK function or by switching between two assistance modes twice (+-+). The value of 9.9 or 2.5 indicating the maximum speed will be displayed.
- E.** Spin the rear wheel and make sure the rear wheel speed is shown on the e-bike display.



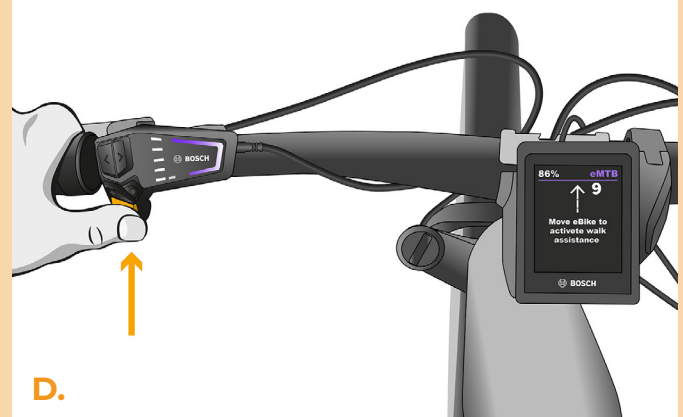
A.



B.



C.



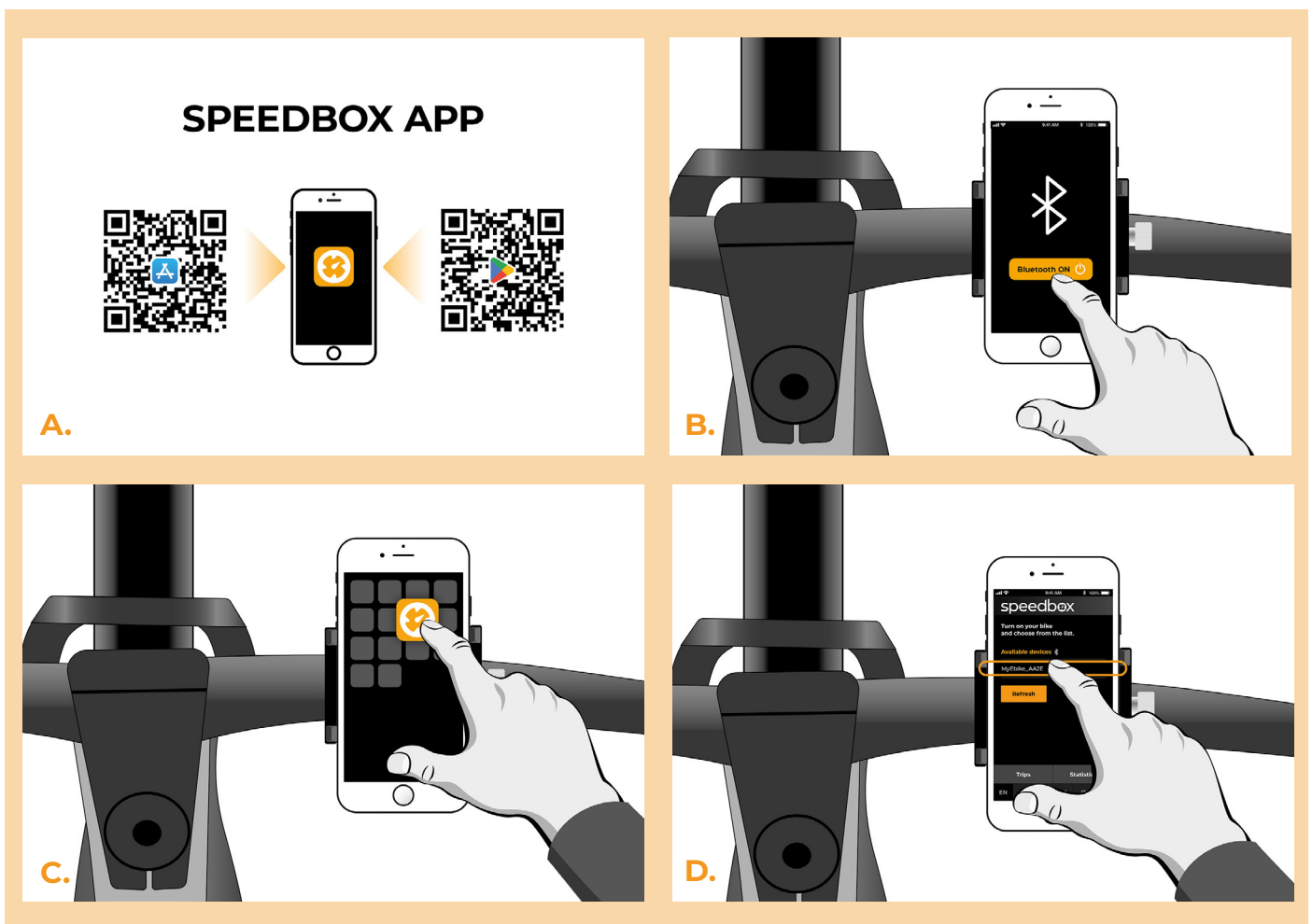
D.

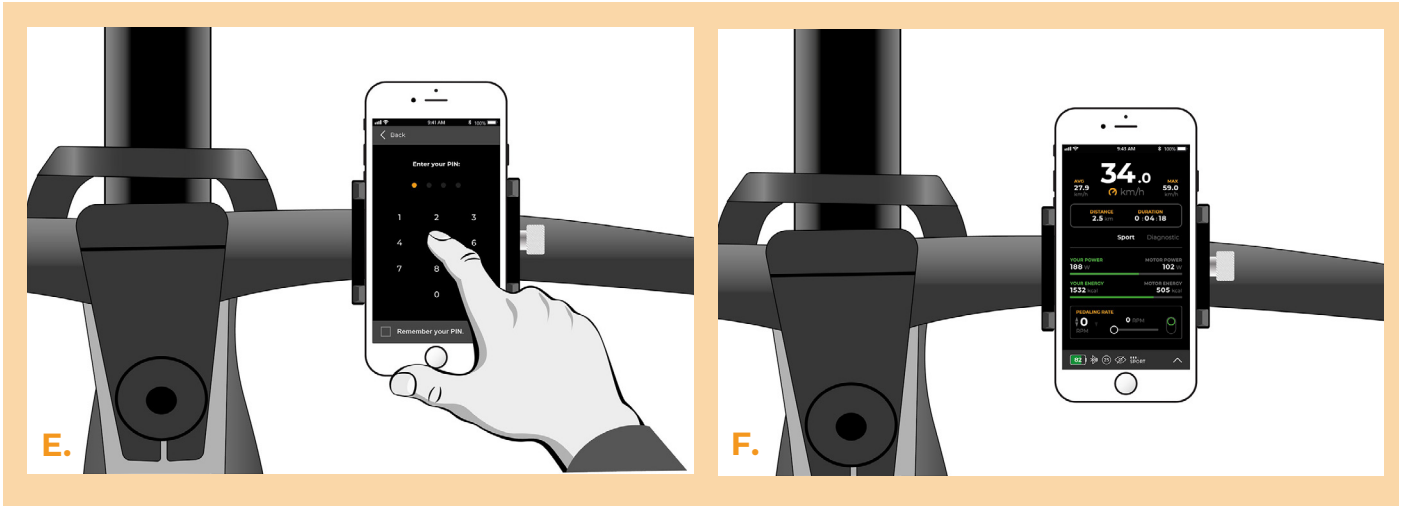


E.

STEP 7: Pairing SpeedBox with the SpeedBox App

- A.** Install the SpeedBox App from Google Play or App Store.
- B.** Turn on Bluetooth on your phone.
- C.** Open the SpeedBox App. Enable location services if prompted.
- D.** Select the device MyEbike_XXXX. If you do not see it in the list, click on the “Refresh” button and, if necessary, make sure that:
 1. Your e-bike is switched on.
 2. You are not further than 5 m from your e-bike.
 3. You have Bluetooth turned on on your mobile phone.
 4. You have enabled location services for the SpeedBox App.
- E.** Choose and confirm your PIN and service password.
- F.** Now you can fully enjoy the SpeedBox App (control tuning, monitor riding data, and information about motor performance and energy consumption, you can set the speed limit, etc.).





www.speedbox-tuning.com

Ebike Electronic s.r.o.

Rybna 716/24 | 110 00 Praha 1 | Czech Republic | ID: 05553555 | VAT: CZ05553555



