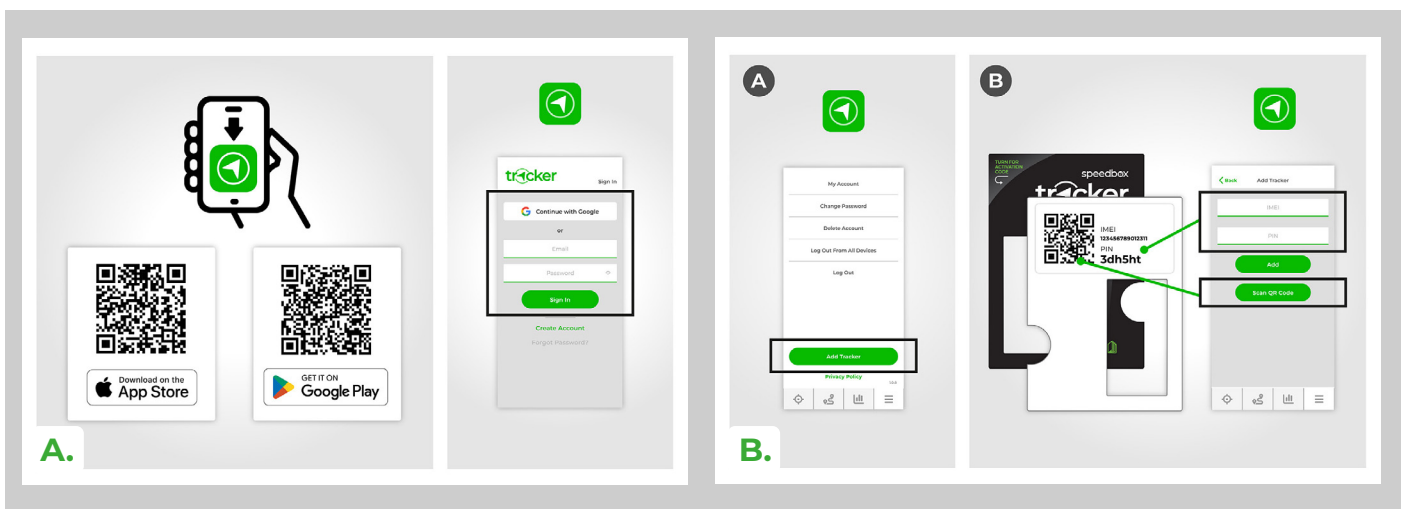


SpeedBox Tracker 1.0 for Yamaha

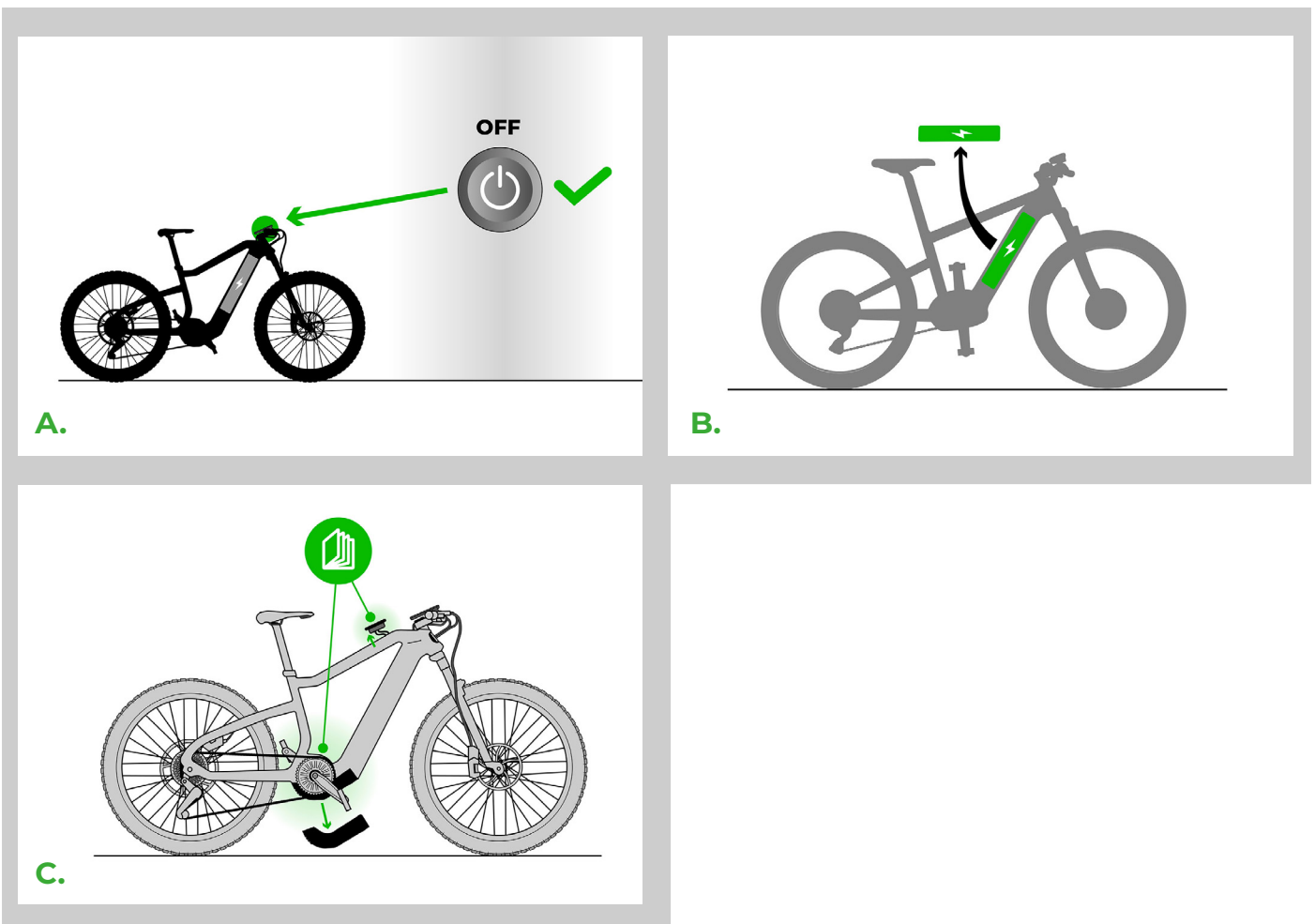
STEP 1: Installing the SpeedBox Tracker mobile app and activating the device

- A.** Install the SpeedBox Tracker app on your mobile phone. Then, create a new user account or log in if you already have an account.
- B.** Click on „Add Device“ and scan the QR code, or enter the IMEI and PIN, which can be found on the included activation card.



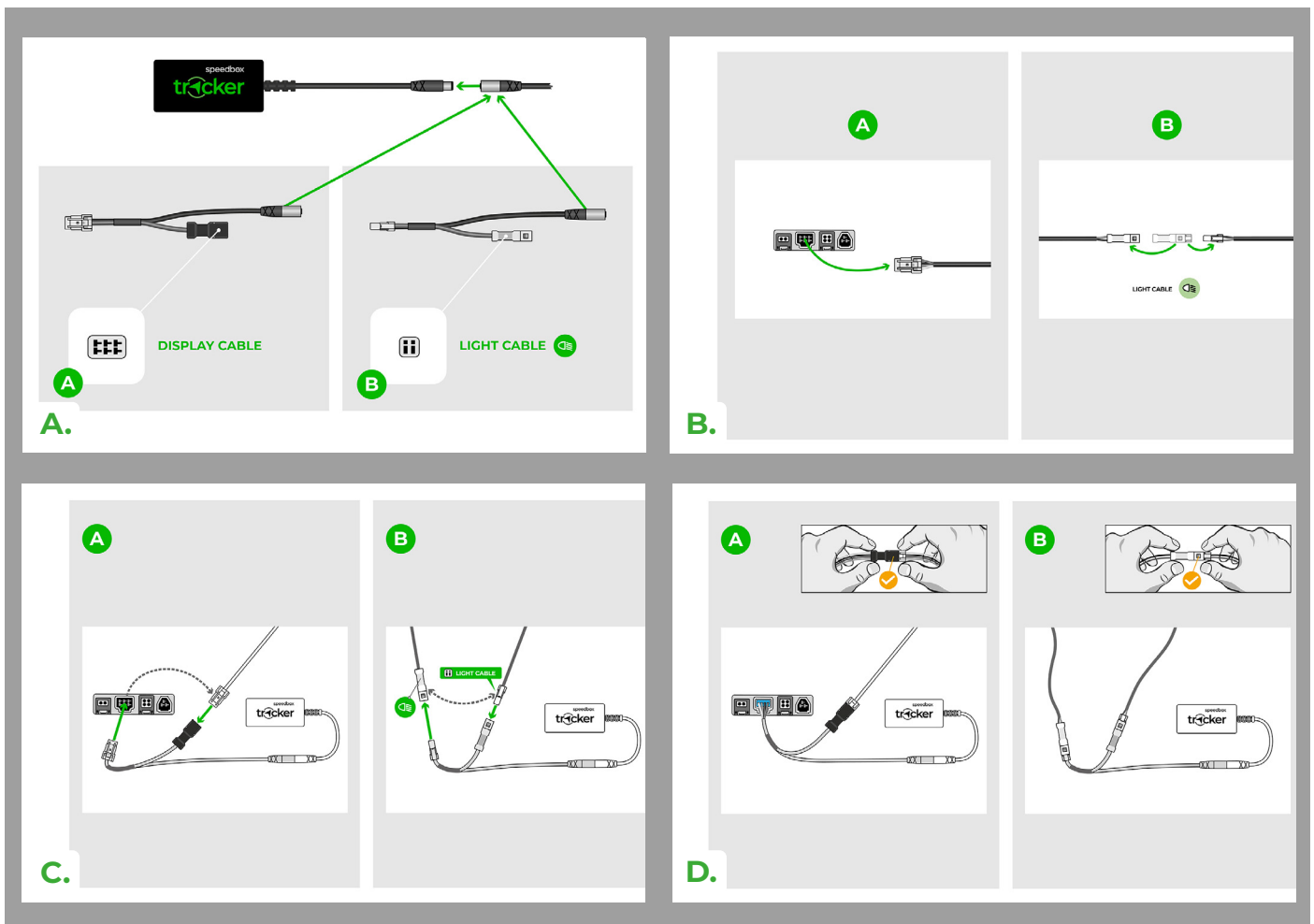
STEP 2: Preparation for installation

- A.** Turn off your e-bike before installing the SpeedBox Tracker device.
- B.** If possible, disconnect and remove the battery from the e-bike.
- C.** Following the manufacturer's instructions, disassemble all components of the e-bike so you have access to the motor connectors or the control unit within the e-bike frame.



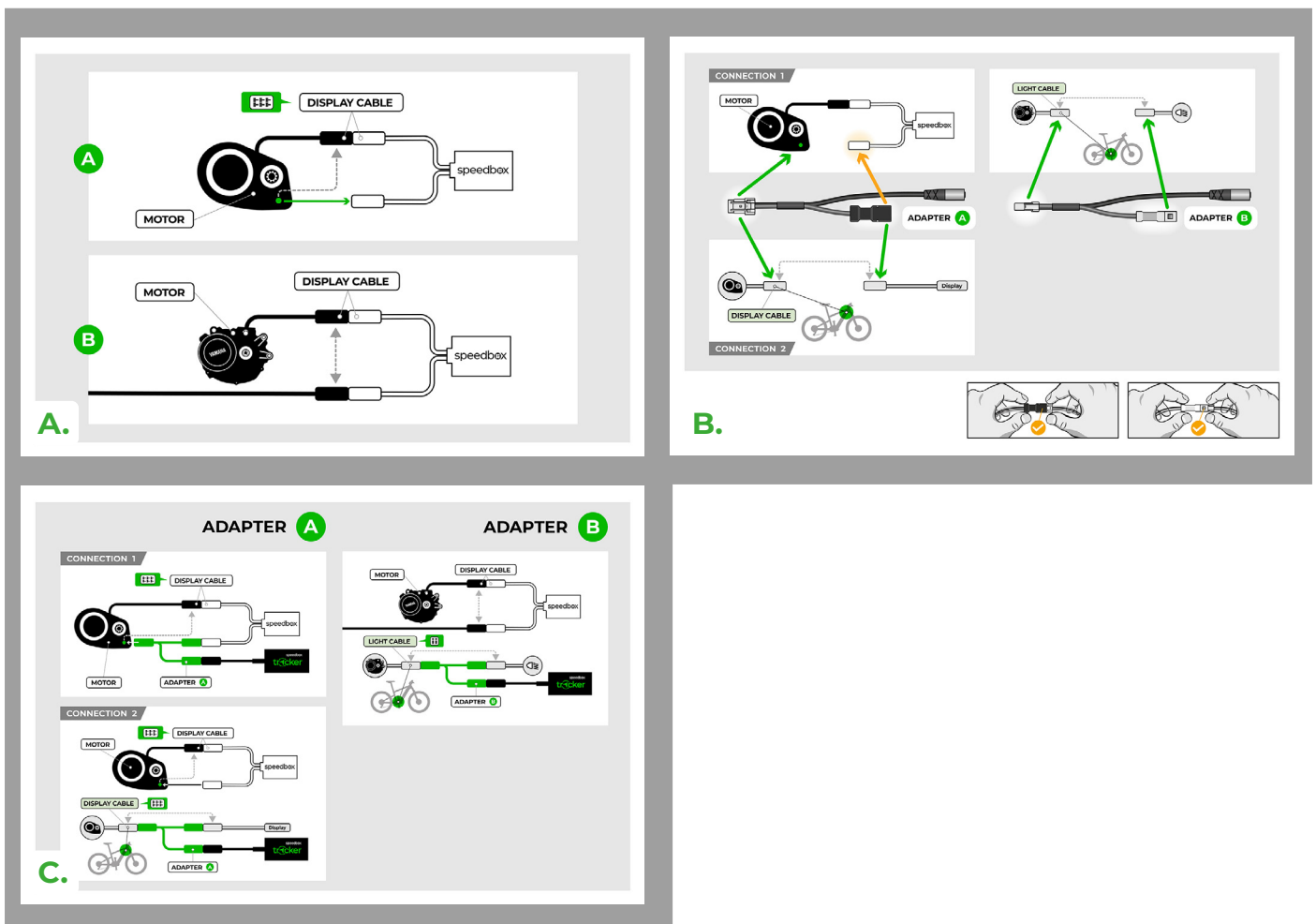
STEP 3: Installing the SpeedBox Tracker device

- A.** Select adapter A or B with connectors according to your motor type and connect it to the Tracker device.
- B.** Disconnect the connector connecting the motor to the display (A) or the motor to the lights (B).
- C.** Connect the disconnected connector using the SpeedBox Tracker adapter.
- D.** Make sure that the locks on the connectors are seated properly.



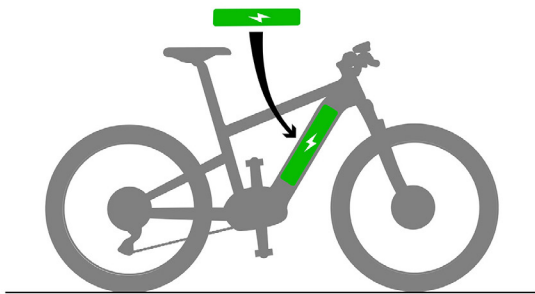
STEP 4: Installing the SpeedBox Tracker along with the SpeedBox Tuning device

- A.** Disconnect the connector connecting the motor to the SpeedBox device (A) or the motor to the lights (B). Some bike models also have the display connector located in the frame above the battery. This connector can also be used to connect the adapter (A).
- B.** Connect the disconnected connector using the SpeedBox Tracker adapter. Make sure the connector locks are correctly aligned.
- C.** Now connect the SpeedBox Tracker device to the selected adapter.

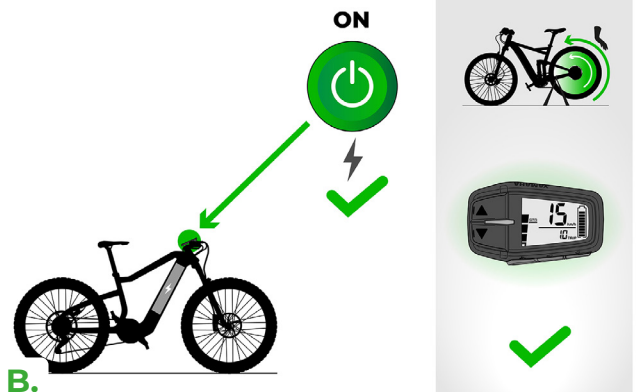


STEP 5: Completing the Installation

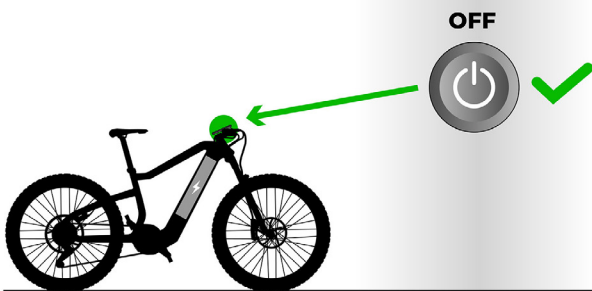
- A.** If the battery was removed, install it back.
- B.** Turn on the e-bike and check that everything on your e-bike is functioning correctly.
- C.** Turn off the e-bike.
- D.** Only now reassemble the e-bike back to its original state.
- E.** By turning on the e-bike, the SpeedBox Tracker device will also begin to charge.
- F.** The SpeedBox Tracker should connect to the server within a few minutes and send information about the battery status to your mobile app. SpeedBox Tracker device comes with one-year pre-paid services. The period starts with the first successful connection to the server. As the pre-paid period nears its end, you will receive an informative email with instructions on how to renew the subscription.



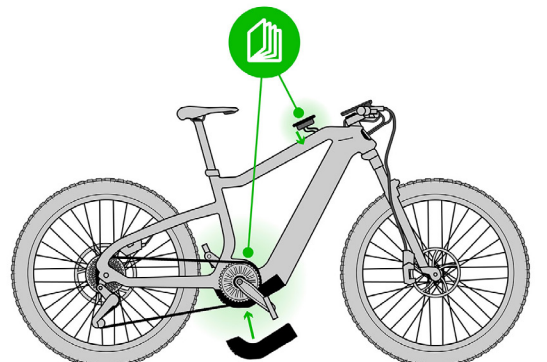
A.



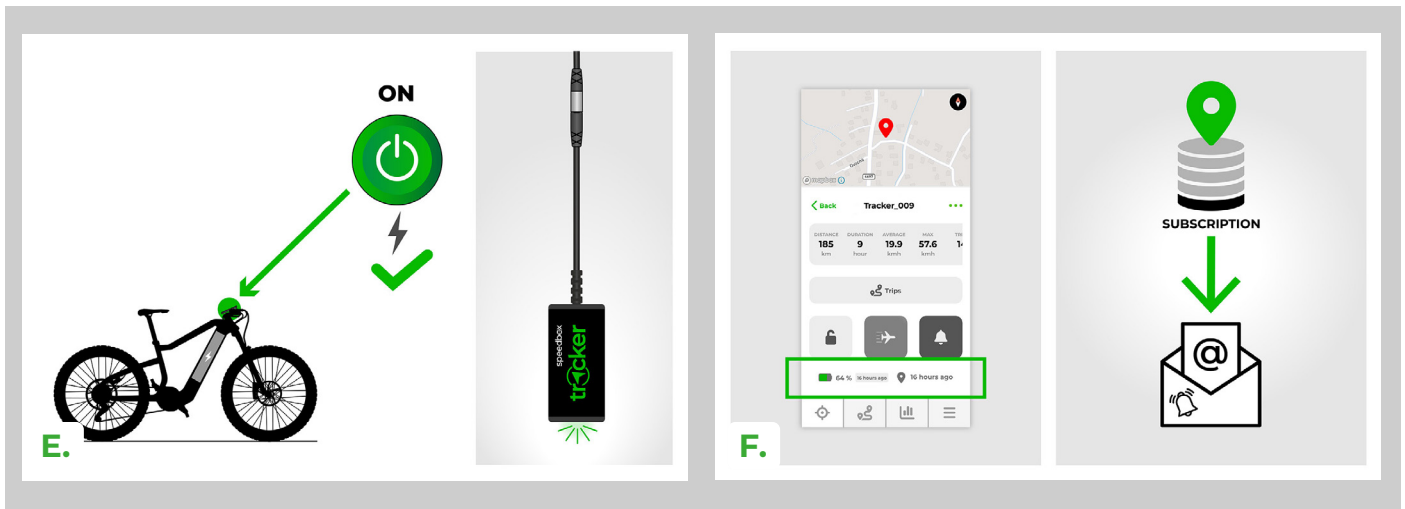
B.



C.

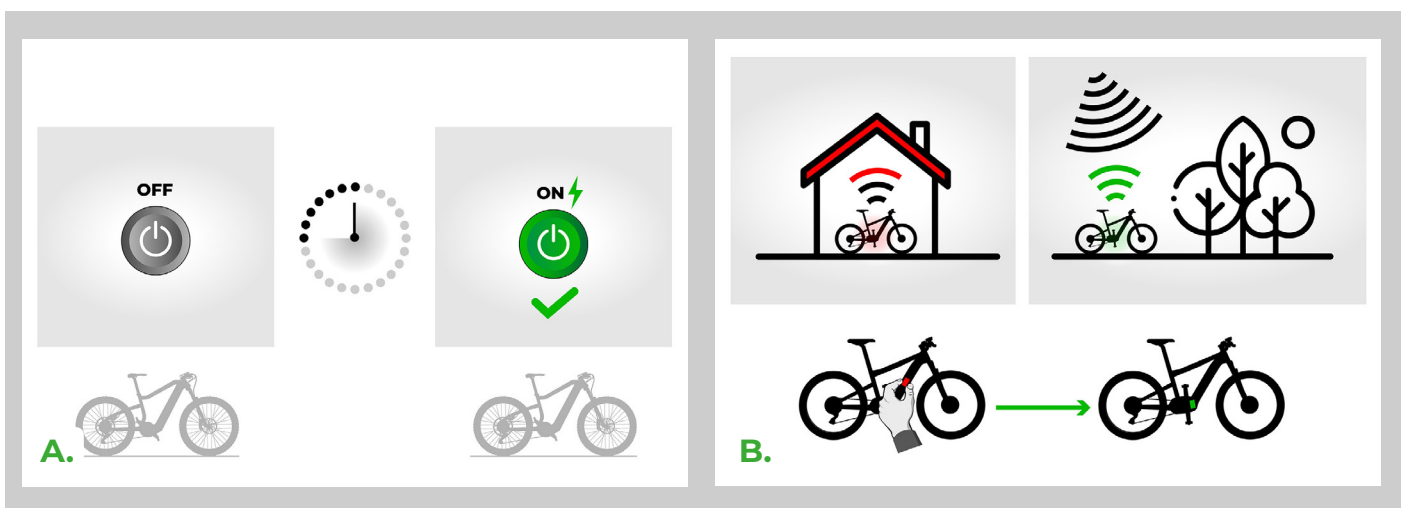


D.



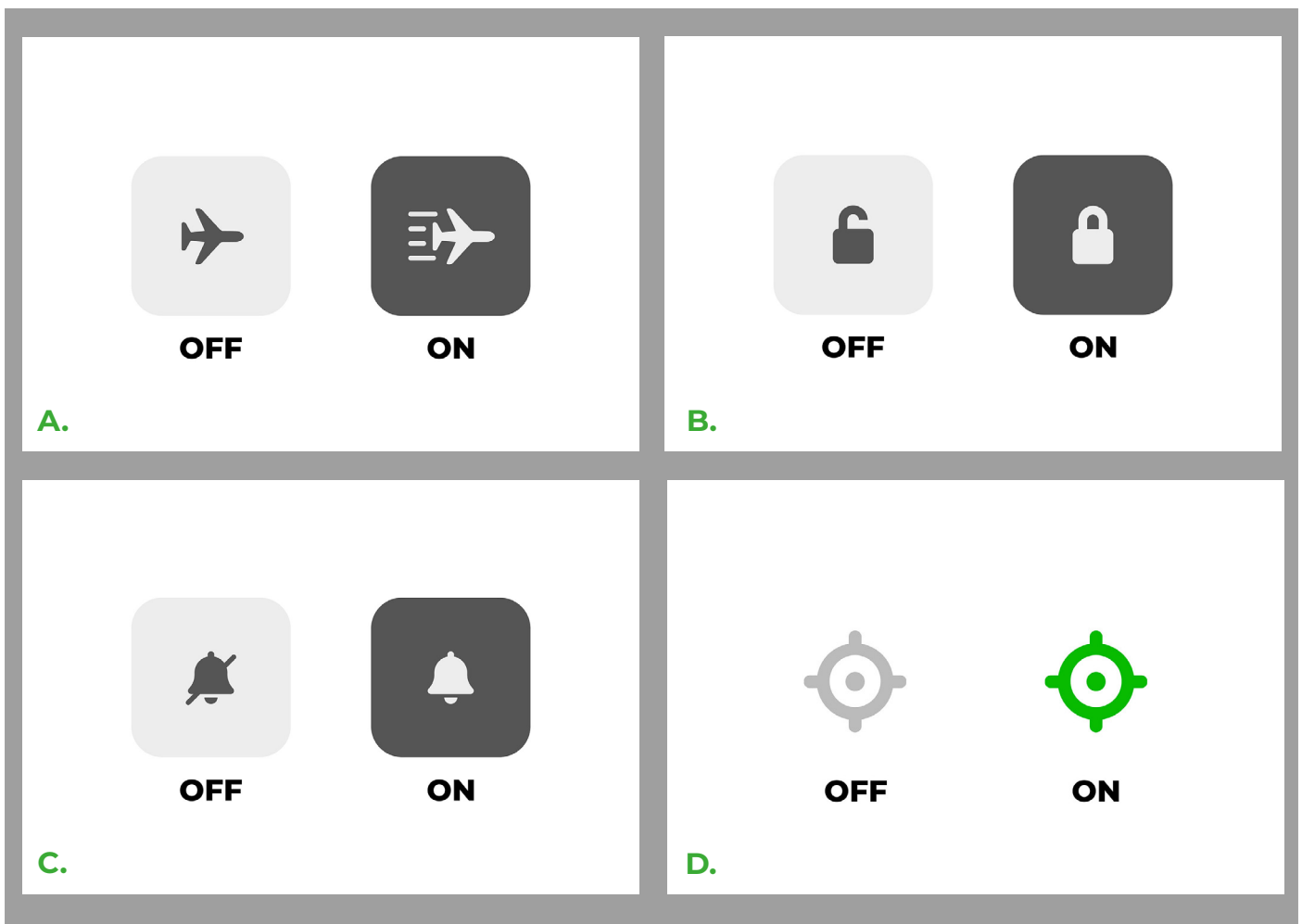
STEP 6: Notice

- A.** If you installed the SpeedBox Tracker device in the e-bike before adding it to the app, turn off the e-bike, wait a few seconds, and then turn it back on.
- B.** If the data does not synchronize even after several minutes, make sure you are in an open area with signal coverage. The e-bike frame may also reduce the signal of the SpeedBox Tracker device. If there are signal issues, try finding a more suitable location for the SpeedBox Tracker device within your e-bike.



STEP 7: SpeedBox Tracker App

- A.** The transport mode is designed to disable route recording when transporting the e-bike, for example, by car or by air. Once activated, the transport mode will turn on during the next synchronization of the Tracker with the server. When the e-bike is turned on (powering the Tracker), the transport mode will be deactivated.
- B.** When the e-bike moves after the lock has been activated, you will be alerted through a notification and an SMS message to your mobile device.
- C.** Turning off notifications in the app will limit alerts for low battery status, expiring subscriptions, etc. However, notifications for movement of the locked Tracker will remain active.
- D.** Location Tracking on the Map. Clicking: The map will center on the last known position of the Tracker. Holding: The map will track the movement of the Tracker.





www.speedbox-tuning.com

Ebike Electronic s.r.o.

Rybna 716/24 | 110 00 Praha 1 | Czech Republic | ID: 05553555 | VAT: CZ05553555

