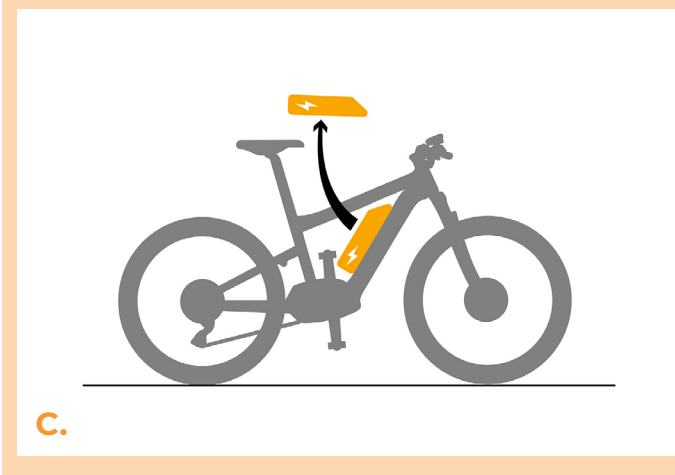
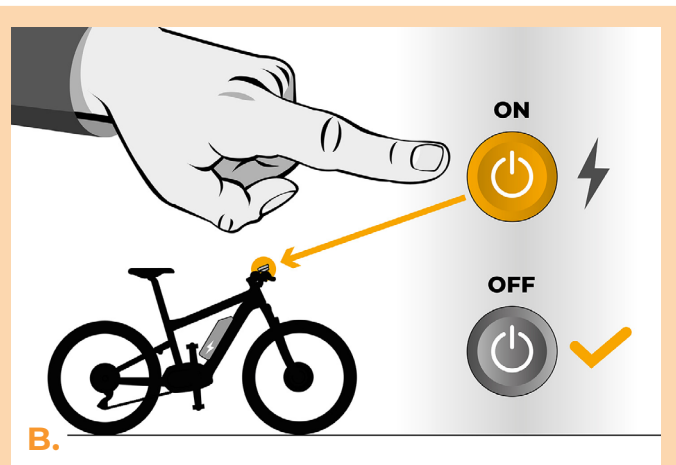
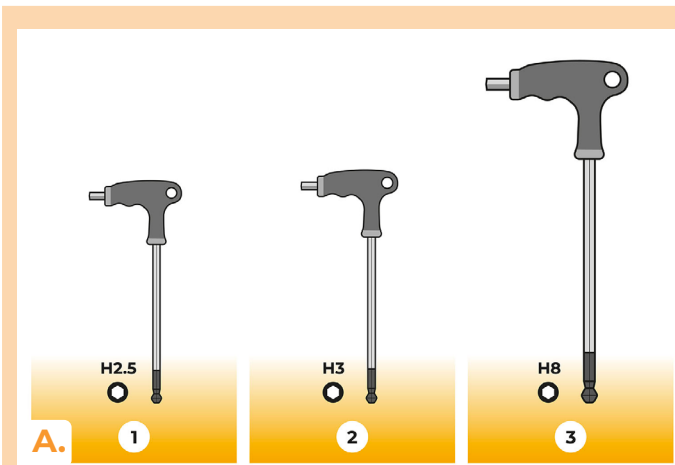


## SpeedBox 3.3 B.Tuning for Yamaha

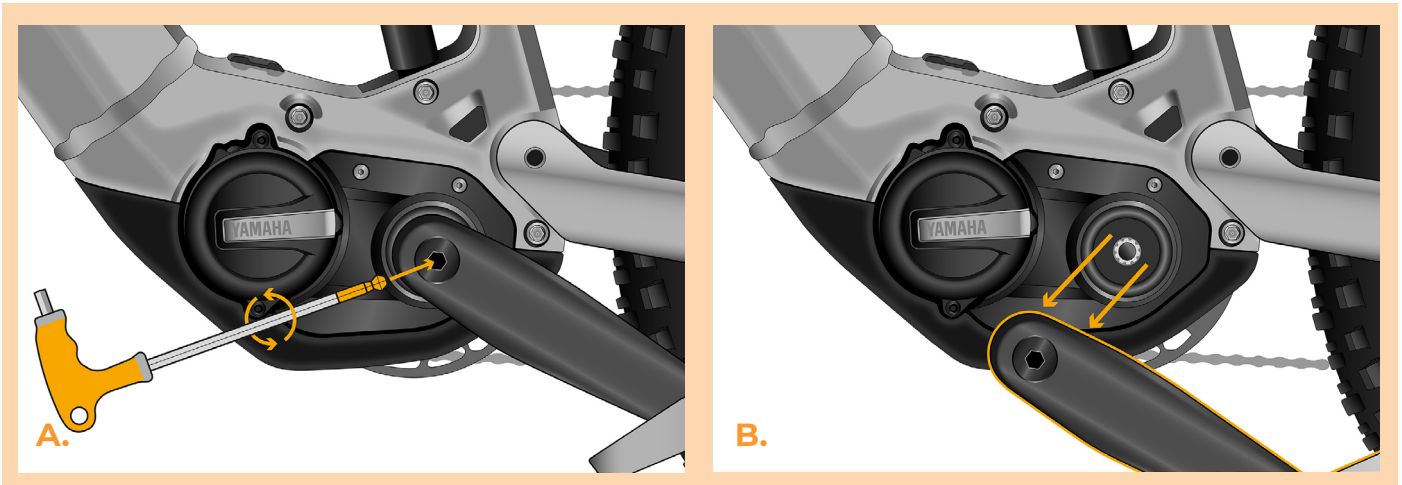
### STEP 1: Preparation for installaion

- A.** Prepare the following tools:
1. Hex Key H2.5
  2. Hex Key H3
  3. Hex Key H8
- B.** Turn off the e-bike.
- C.** Remove the battery from the e-bike according to the manufacturer's manual.



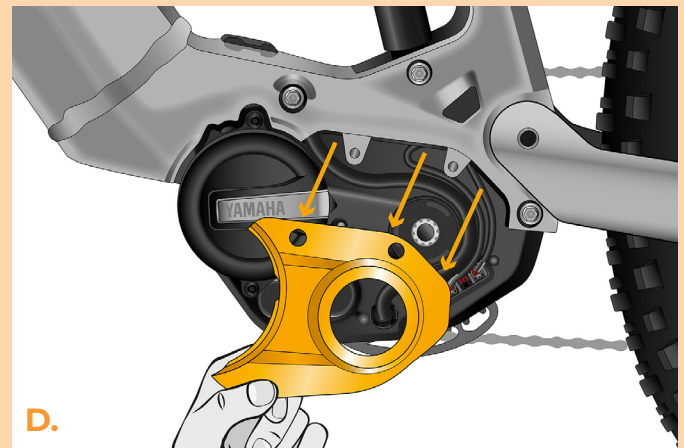
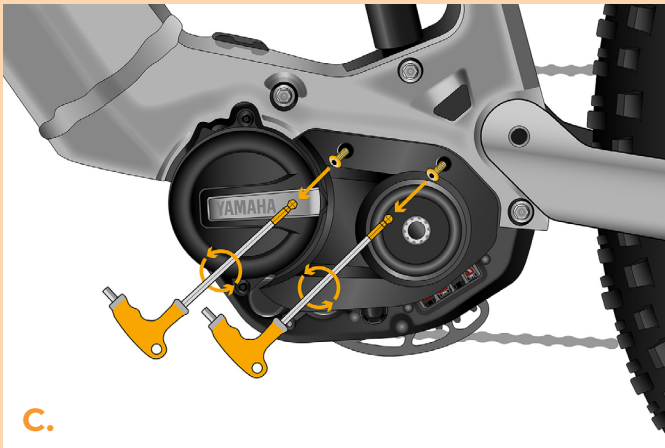
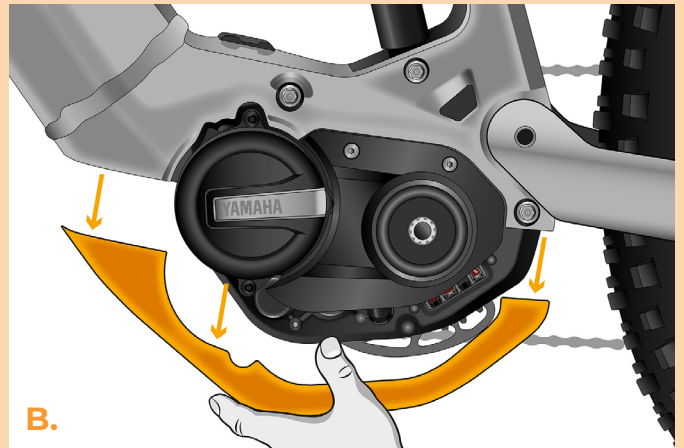
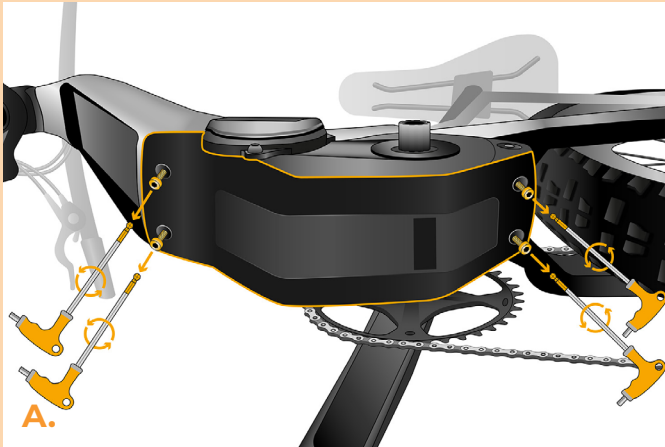
## STEP 2: Crank removal

- A.** Remove the crank bolt of the left crank arm using the hex key H8. If the crank is not self-extracting, it is necessary to use a crank puller - please see the User manual on our website.
- B.** Remove the crank arm from the central axis of the motor.



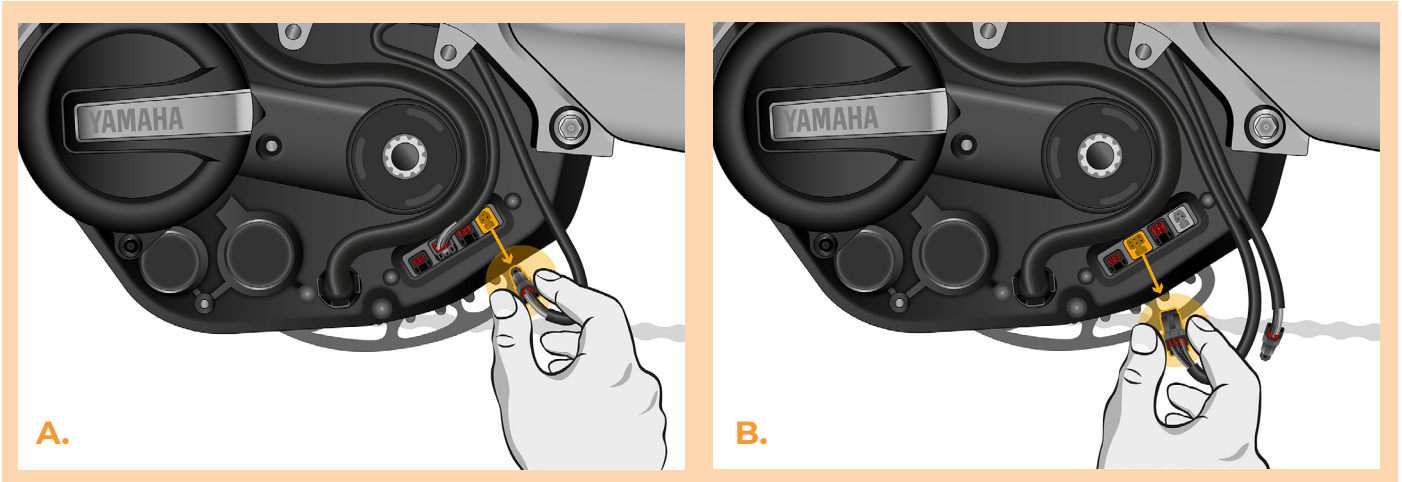
## STEP 3: Motor cover removal

- A.** Unscrew the screws holding the lower motor cover with the hex key H3.
- B.** Remove the motor cover.
- C.** Unscrew the two screws holding the side motor cover with the hex key H2.5.
- D.** Remove the side motor cover.



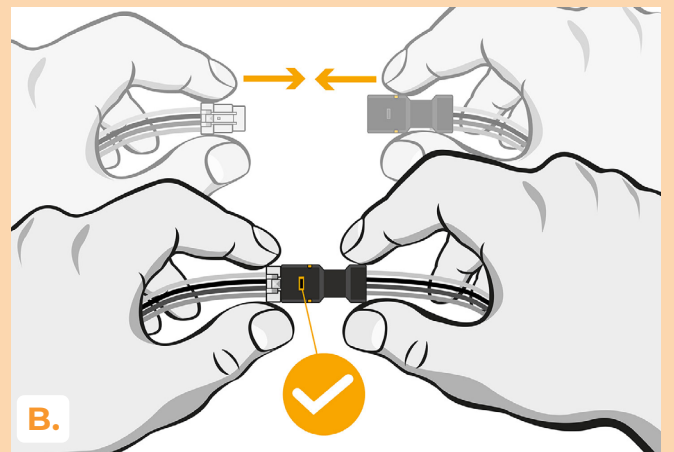
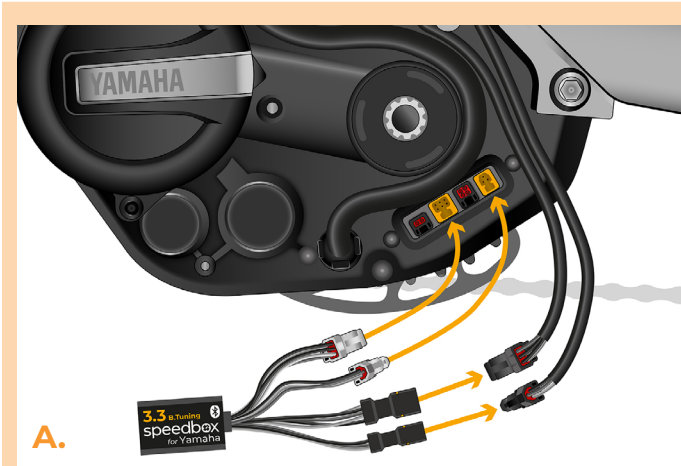
## STEP 4: Disconnecting the connectors from the motor

- A.** Disconnect the speed sensor connector.
- B.** Disconnect the display connector in the same manner.



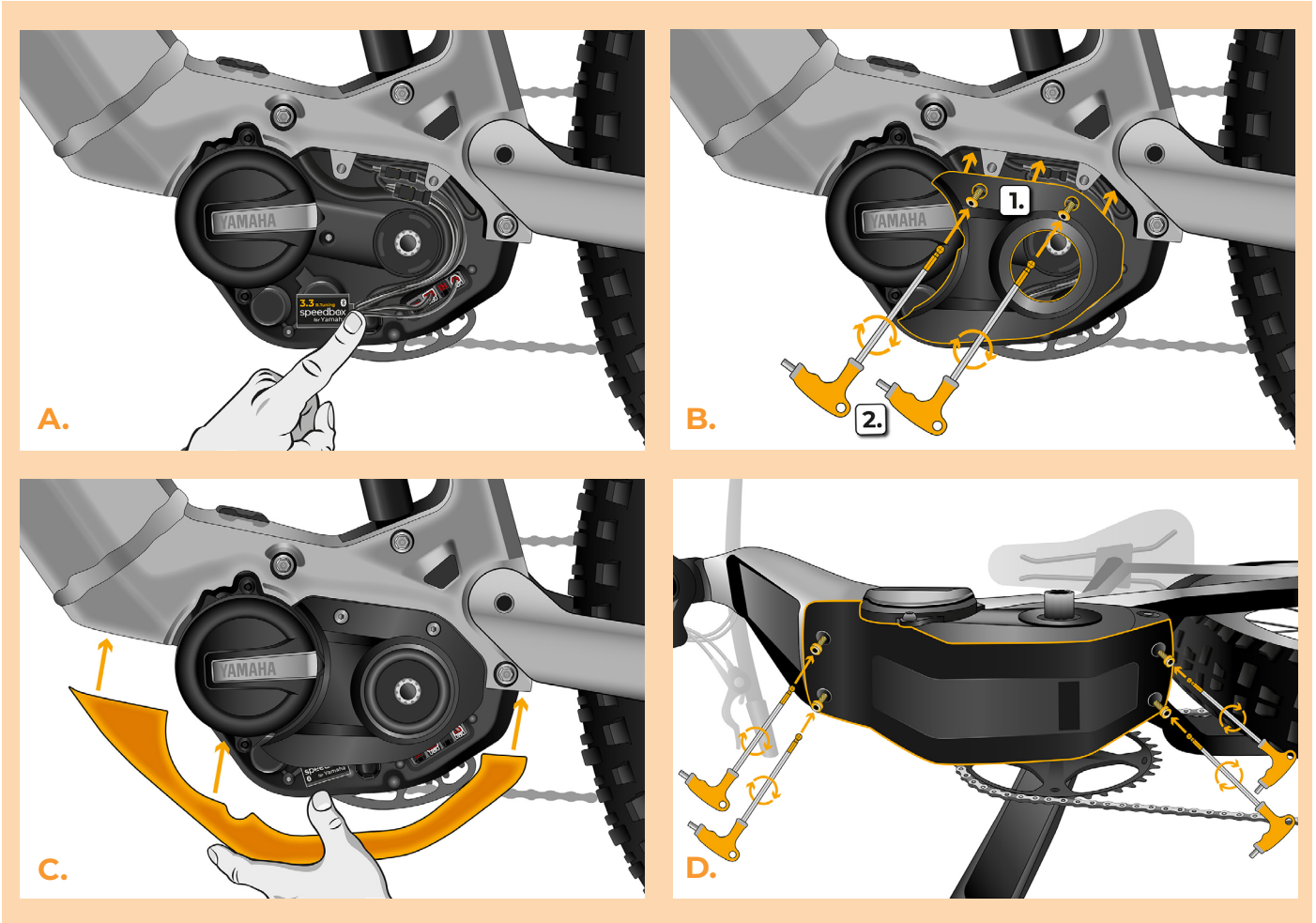
## STEP 5: SpeedBox tuning installation

- A.** Plug SpeedBox into the disconnected connectors (step 4).
- B.** Make sure that the locks on the connectors are seated properly
- C.** Before reattaching the motor cover, check the correct wiring as shown in the figure.



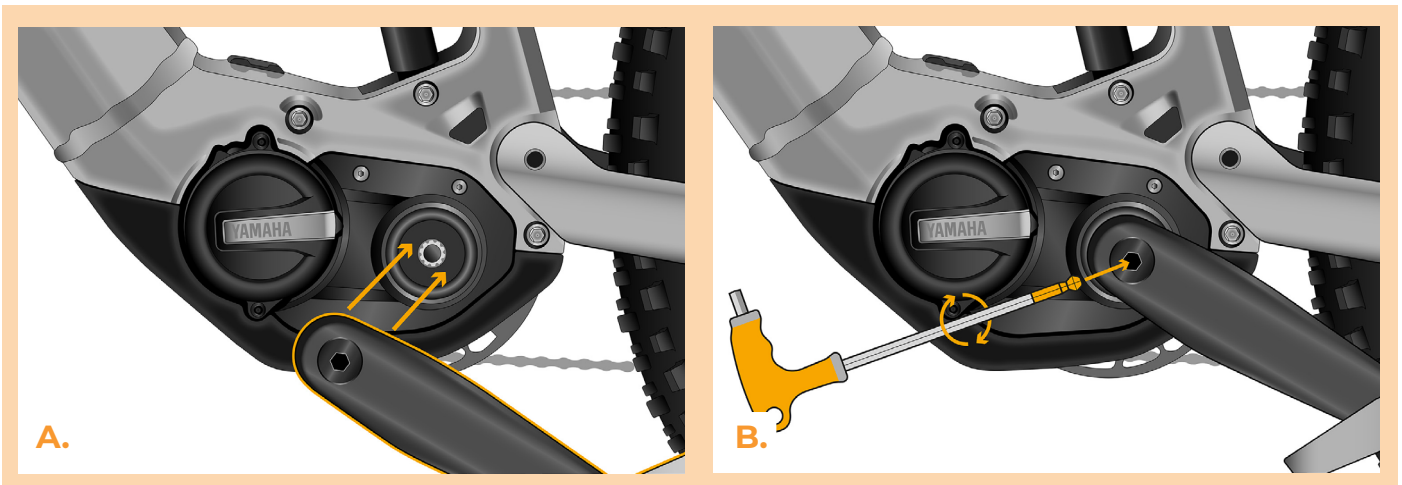
## STEP 6: Motor cover assembly

- A.** Fit the SpeedBox and all connectors and wires leading from the motor into the free space under the side motor cover.
- B.** Put the side motor cover back (1.) and tighten the screws with the hex key H2.5 (2.).
- C.** Put the lower motor cover back.
- D.** Attach the motor cover with screws using the hex key H3.



## STEP 7: Crank assembly

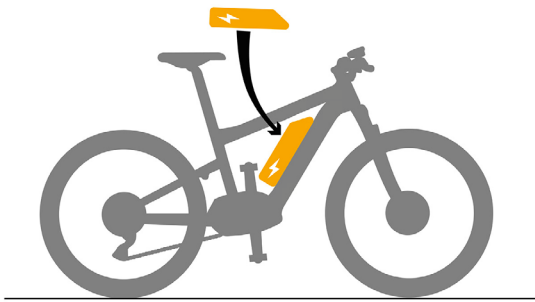
- A.** Put the crank arm back to the central axis of the e-bike motor.
- B.** Screw the crank bolt into the crank arm and tighten it with the hex key H8.



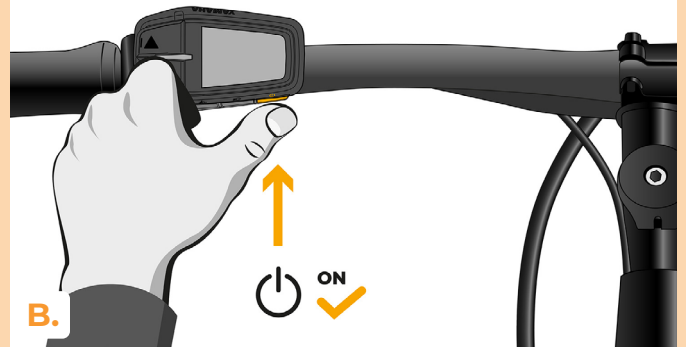


## STEP 8: Tuning function check

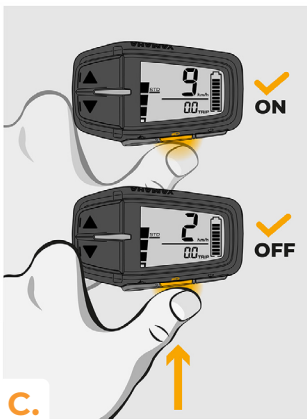
- A. Place the battery back into the e-bike.
- B. Turn the e-bike on.
- C. You will activate/deactivate SpeedBox by pressing the LIGHT button shortly or by switching between two assistance modes twice (↑ ↓ ↑ ↓). The value of 99 or 25 will be shown indicating the maximum speed limit in km/h.
- D. Spin the rear wheel and make sure the rear wheel speed is shown on the e-bike display.



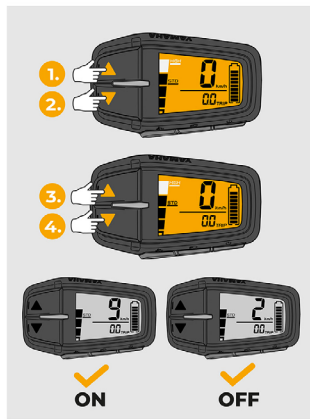
A.



B.



C.



ON

OFF

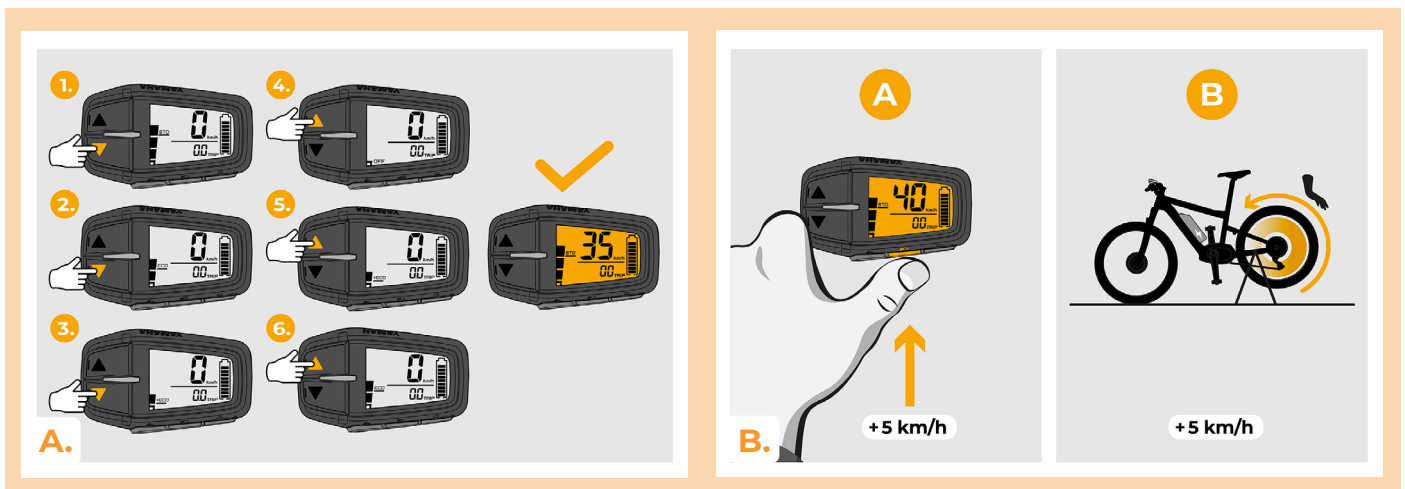


D.



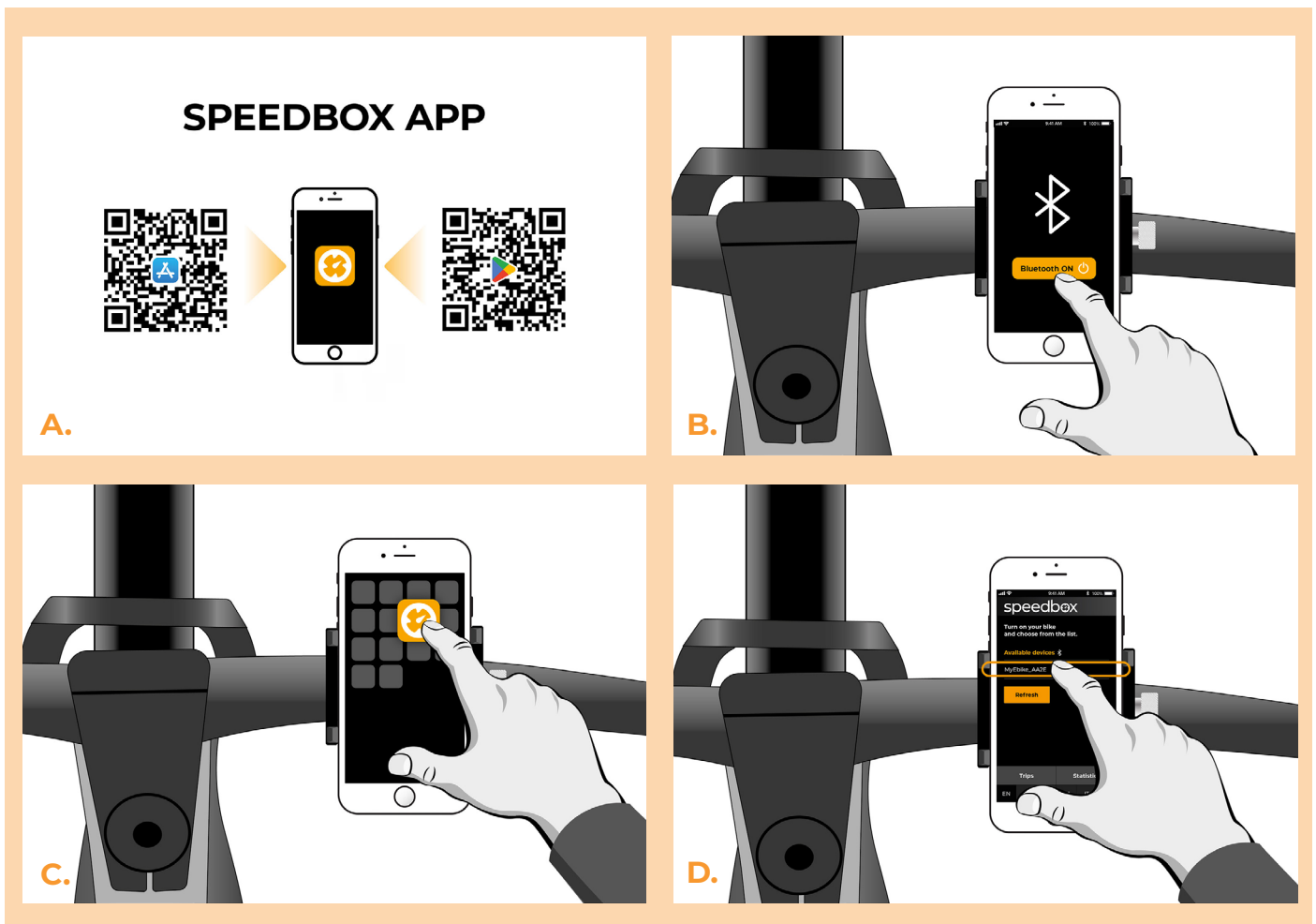
## STEP 9: Setting the speed limit

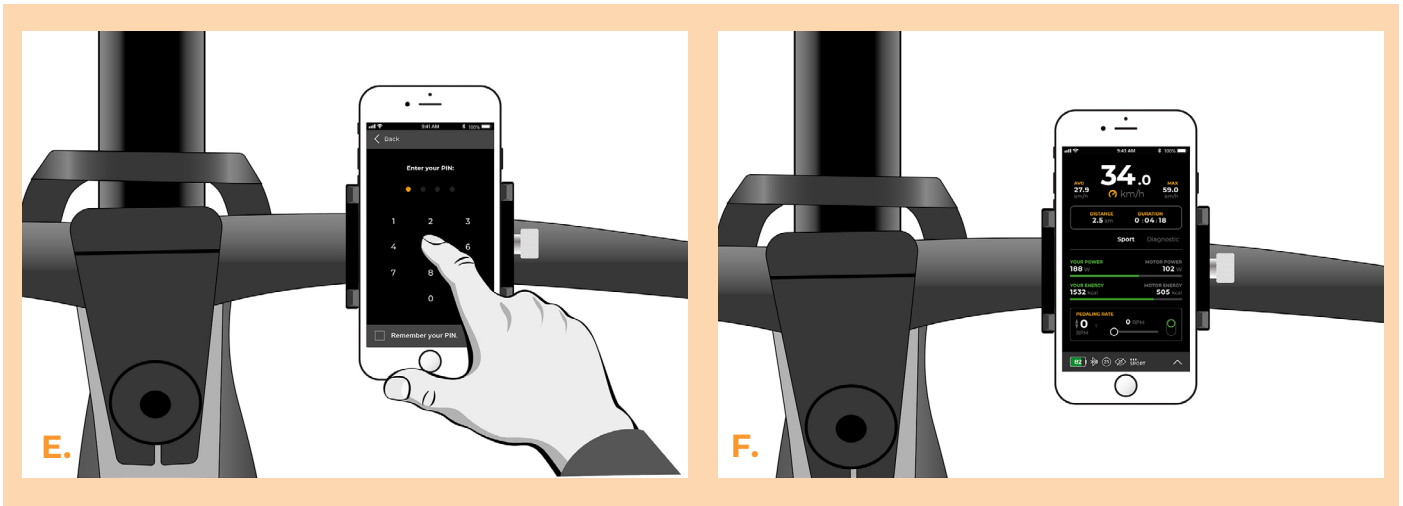
- A.** Set HIGH mode. Switch between the assistance modes briefly in the following order HIGH > STD > ECO > ECO+ > ECO > STD > HIGH, i.e. go three levels down and three levels up ↓ ↓ ↓ ↑ ↑ ↑. The current speed limit will be displayed.
- B.** Set the maximum speed limit by pressing the LIGHT button briefly or by turning the rear wheel 360°. With each press on the button or turning of the wheel, the limit will increase by 5 km/h.



## STEP 10: Pairing SpeedBox with the SpeedBox App

- A.** Install the SpeedBox App from Google Play or App Store.
- B.** Turn on Bluetooth on your phone.
- C.** Open the SpeedBox App. Enable location services if prompted.
- D.** Select the device MyEbike\_xxxx. If you do not see it in the list, click on the “Refresh” button and, if necessary, make sure that:
  1. Your e-bike is switched on.
  2. You are not further than 5 m from your e-bike.
  3. You have Bluetooth turned on on your mobile phone.
  4. You have enabled location services for the SpeedBox App.
- E.** Choose and confirm your PIN and service password.
- F.** Now you can fully enjoy the SpeedBox App (control tuning, monitor riding data, and information about motor performance and energy consumption, you can set the speed limit, etc.).





[www.speedbox-tuning.com](http://www.speedbox-tuning.com)

Ebike Electronic s.r.o.

Rybna 716/24 | 110 00 Praha 1 | Czech Republic | ID: 05553555 | VAT: CZ05553555

