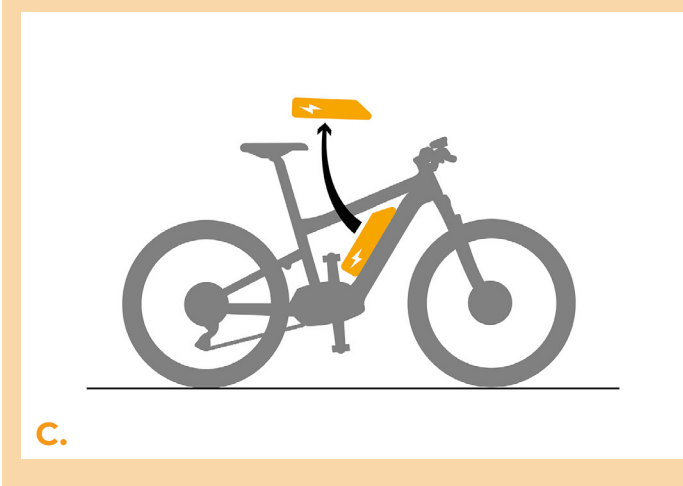
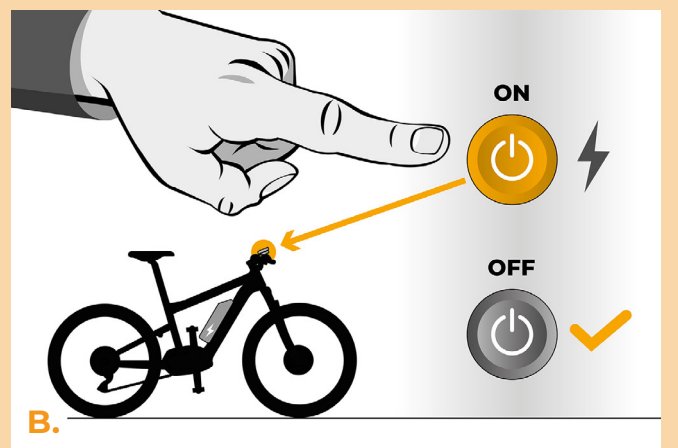
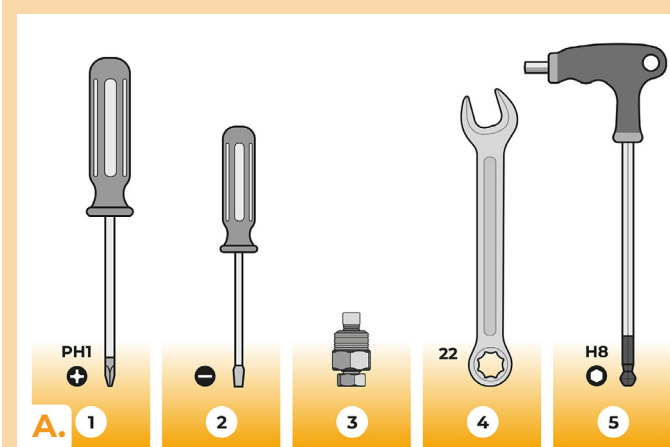


SpeedBox 3.0 B.Tuning for Bafang

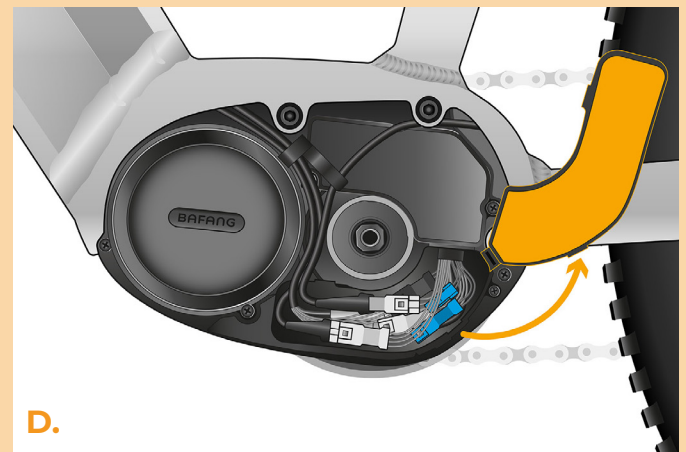
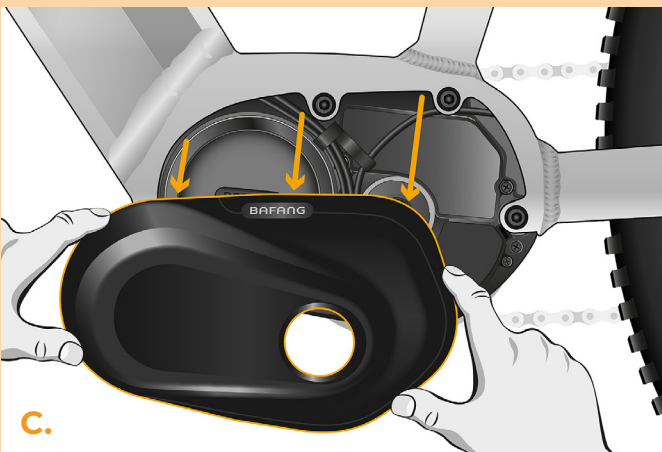
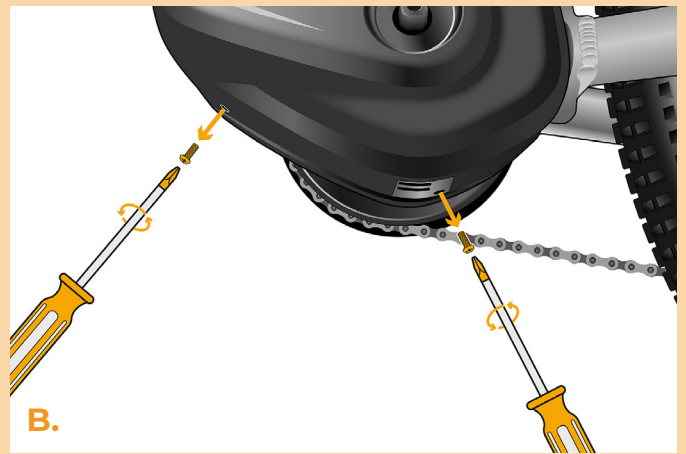
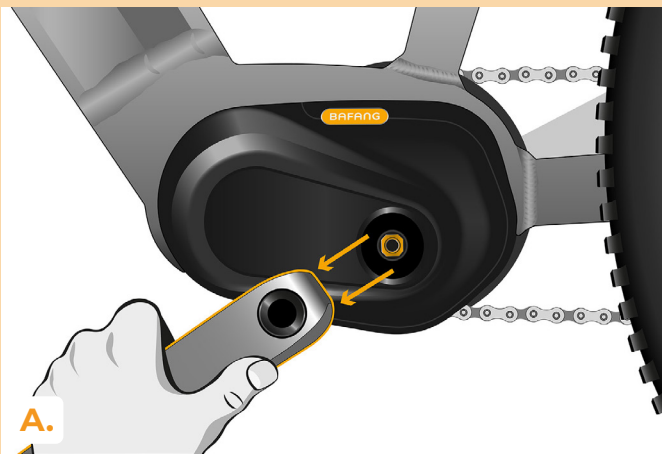
STEP 1: Preparation for installaion

- A.** Prepare the following tools:
1. Phillips screwdriver PH1
 2. Precision slotted screwdriver
- If crank removal is necessary, you will need:
3. Crank puller (for quadrilateral central axes)
 4. Hex Key H8
 5. Wrench 22 mm
- B.** Turn off the e-bike.
- C.** Remove the battery from the e-bike according to the manufacturer's manual.



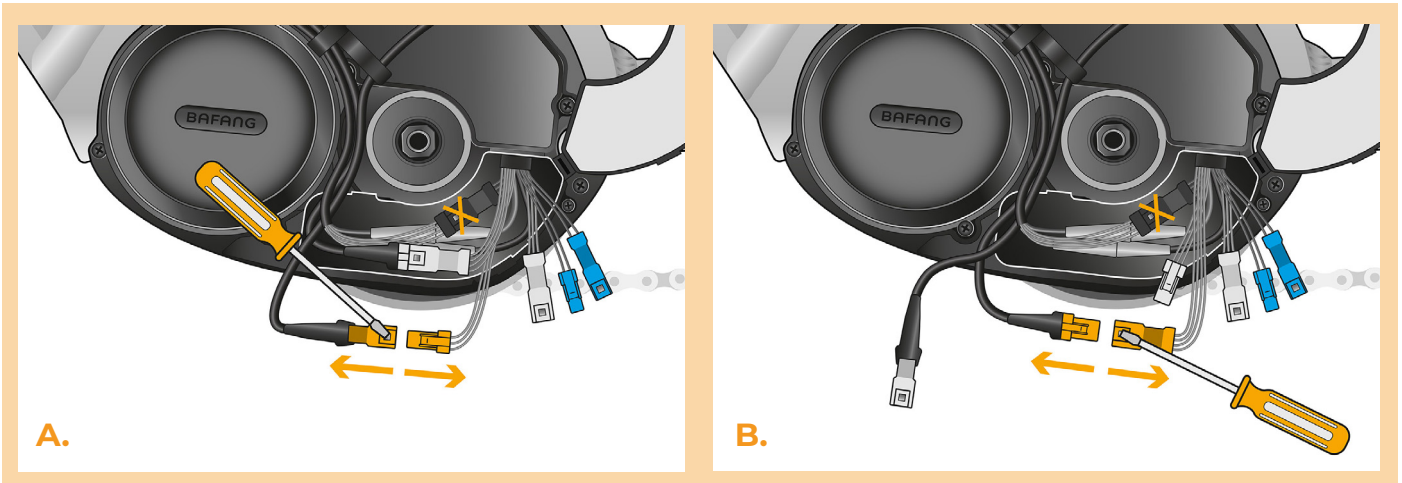
STEP 2: Motor cover removal

- A.** If the crank interferes with the removal of the plastic motor cover, it must be dismantled according to the manufacturer's manual.
- B.** Unscrew the two screws holding the upper motor cover with the Phillips screwdriver PH1.
- C.** Remove the motor cover.
- D.** Unfold the connector cover.



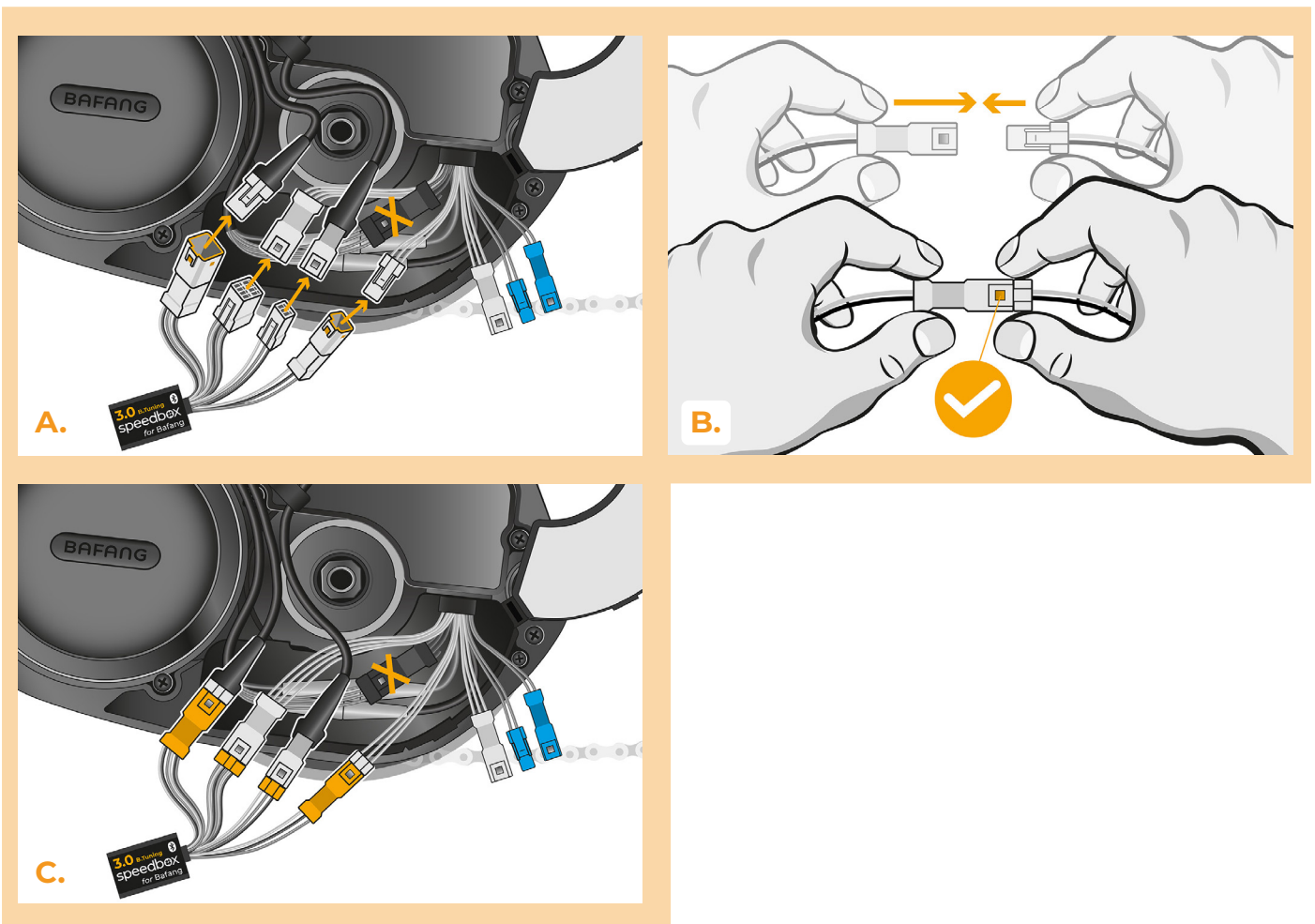
STEP 3: Disconnecting the connectors from the motor

- A.** Using the precision slotted screwdriver, disconnect the speed sensor connector.
- B.** Disconnect the display connector in the same manner.



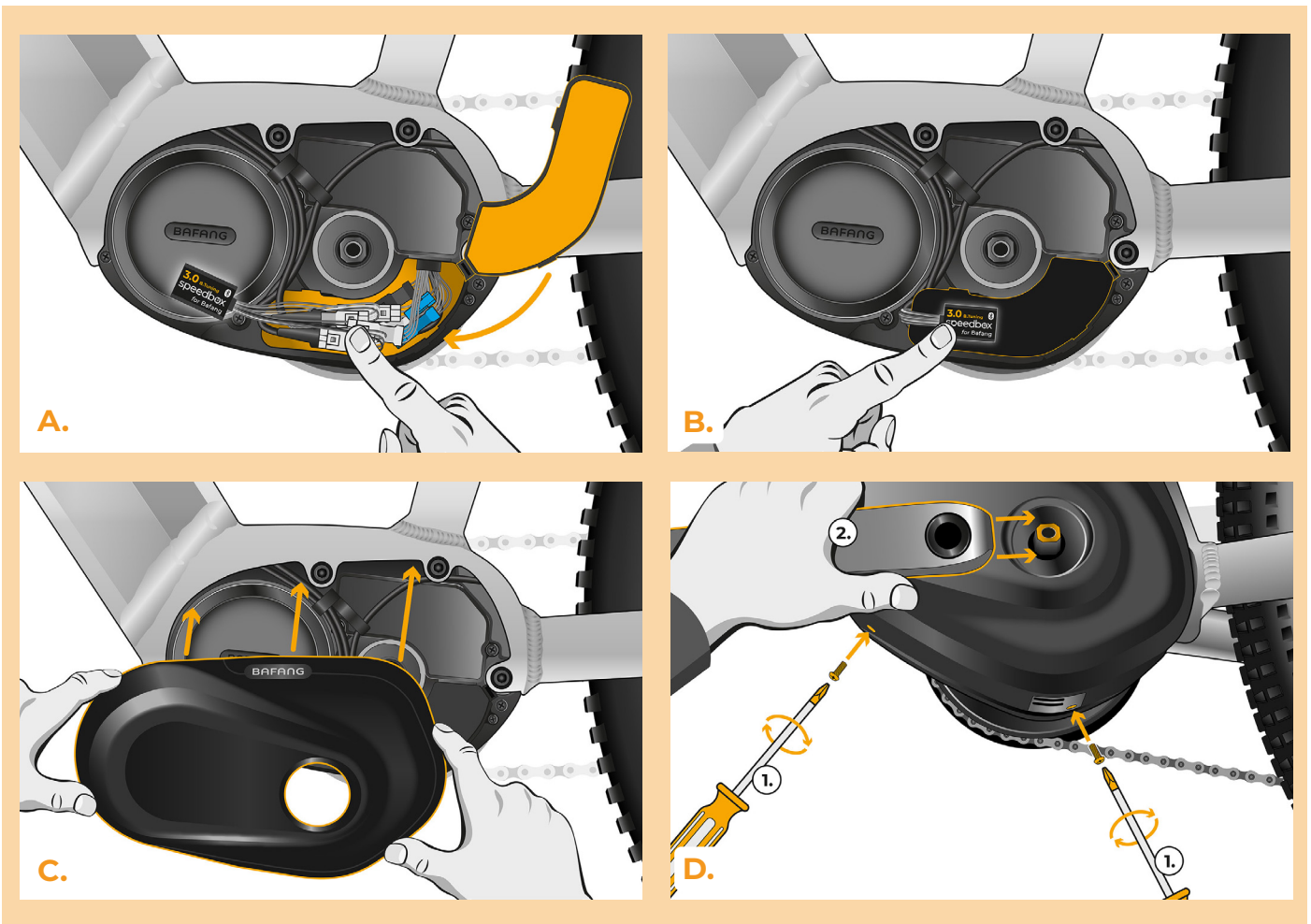
STEP 4: SpeedBox tuning installation

- A.** Plug SpeedBox into the disconnected connectors (step 3).
- B.** Make sure that the locks on the connectors are seated properly
- C.** Before assembling the motor, check the correct wiring as shown in the figure.



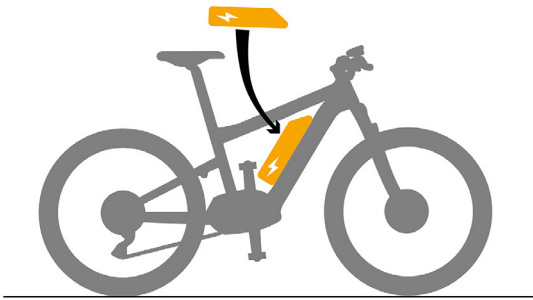
STEP 5: Motor cover assembly

- A.** Place the connectors and wiring leading from the motor back into the space designated for the e-bike connectors. Leave the SpeedBox itself pulled out.
- B.** Fold the connector cover back and leave the SpeedBox itself under the motor cover.
- C.** Put the motor cover back in its original position.
- D.** Using the Phillips screwdriver PH1, attach the motor cover with screws (1.). If the crank was removed in step 2, install it back (2.).

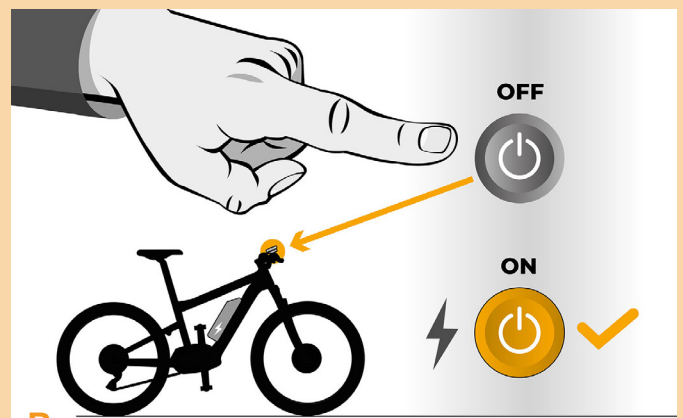


STEP 6: Tuning function check

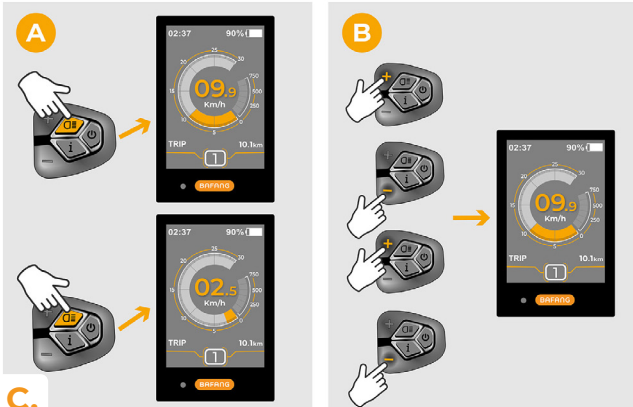
- A.** Place the battery back into the e-bike.
- B.** Turn the e-bike on.
- C.** Activate/deactivate SpeedBox by pressing the LIGHT button or by switching between two assistance modes twice (+-+). The value of 9.9 or 2.5 will be shown indicating the maximum speed limit in km/h.
- D.** Spin the rear wheel and make sure the rear wheel speed is shown on the e-bike display.



A.



B.



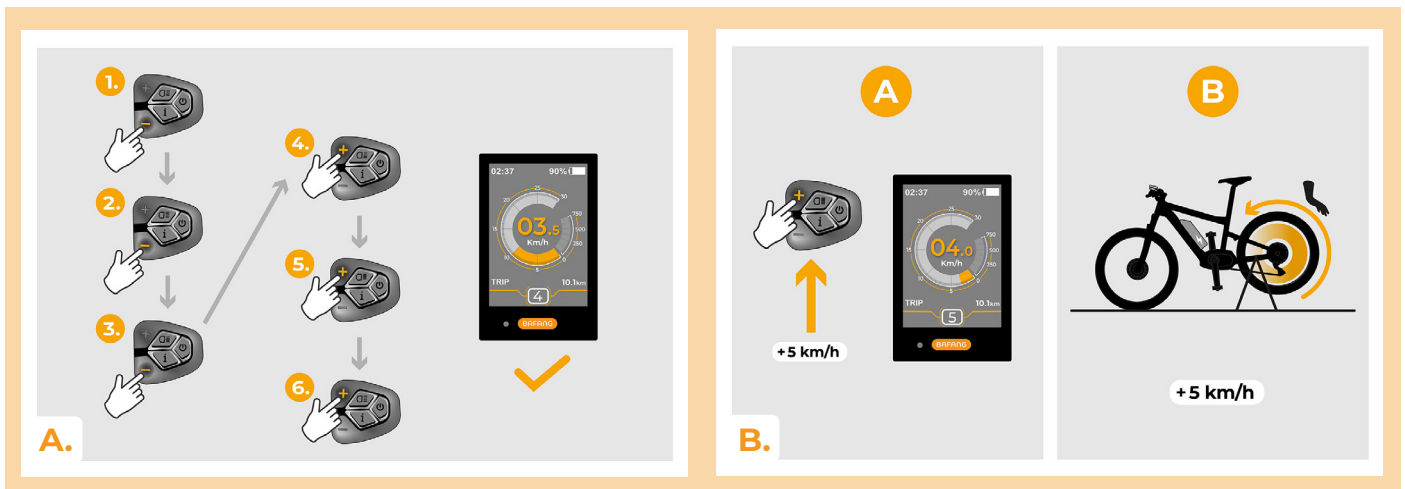
C.



D.

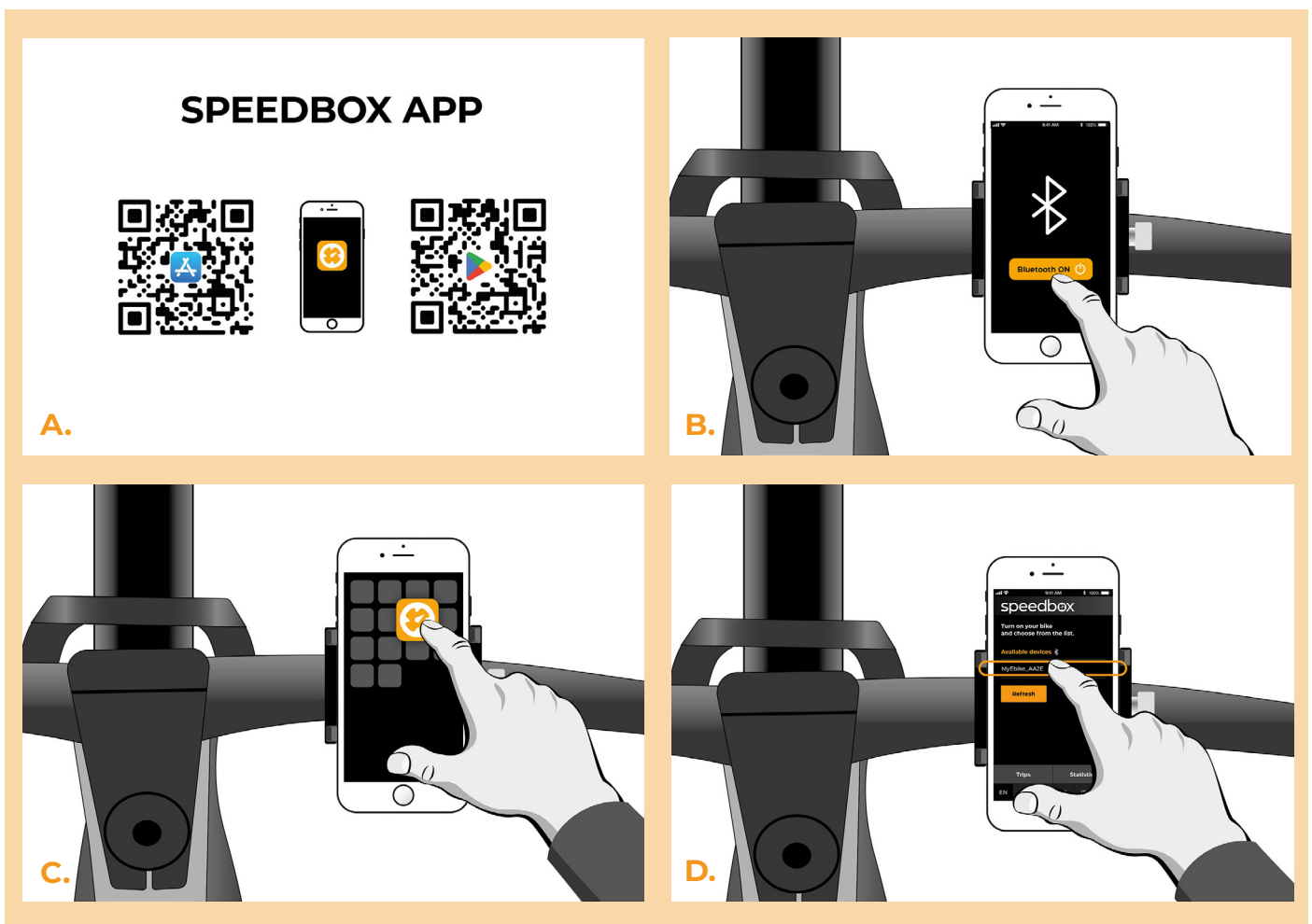
STEP 7: Setting the speed limit

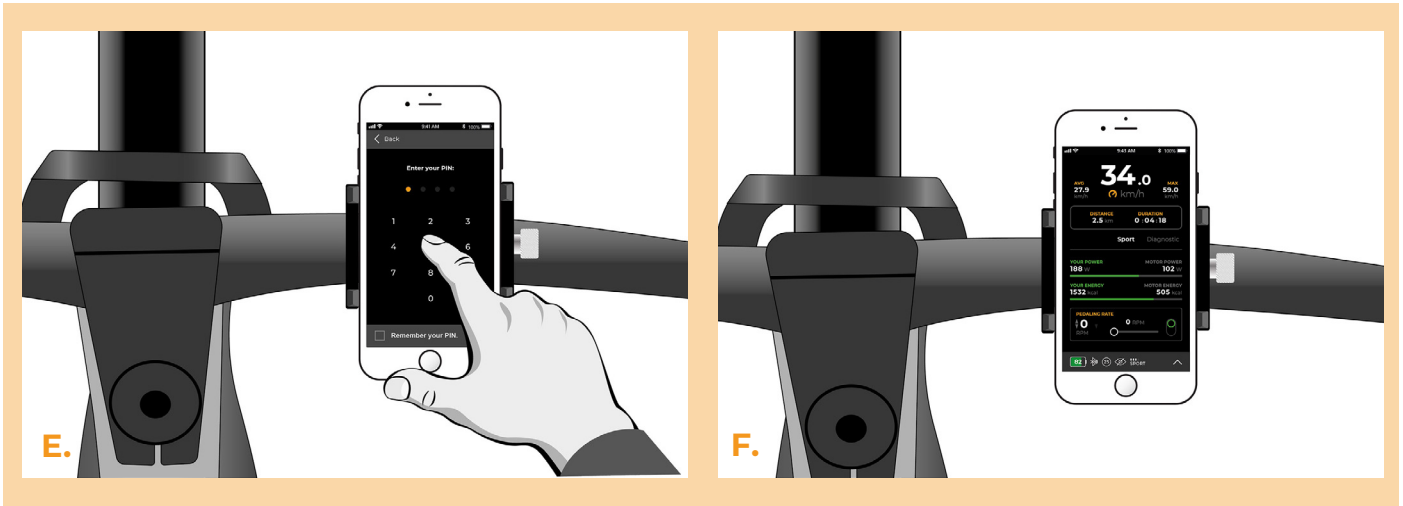
- A.** To set the maximum speed limit, switch the modes: - - - + + +. The current speed limit will be displayed.
- B.** Set the maximum speed limit by pressing the + button briefly or by turning the rear wheel 360°. With each press on the + button or turning of the wheel, the limit increases by 5 km/h. The last displayed limit is saved after five seconds of inactivity.



STEP 8: Pairing SpeedBox with the SpeedBox App

- A.** Install the SpeedBox App from Google Play or App Store.
- B.** Turn on Bluetooth on your phone.
- C.** Open the SpeedBox App. Enable location services if prompted.
- D.** Select the device MyEbike_xxxx. If you do not see it in the list, click on the “Refresh” button and, if necessary, make sure that:
 1. Your e-bike is switched on.
 2. You are not further than 5 m from your e-bike.
 3. You have Bluetooth turned on on your mobile phone.
 4. You have enabled location services for the SpeedBox App.
- E.** Choose and confirm your PIN and service password.
- F.** Now you can fully enjoy the SpeedBox App (control tuning, monitor riding data, and information about motor performance and energy consumption, you can set the speed limit, etc.).





www.speedbox-tuning.com

Ebike Electronic s.r.o.

Rybna 716/24 | 110 00 Praha 1 | Czech Republic | ID: 05553555 | VAT: CZ05553555



