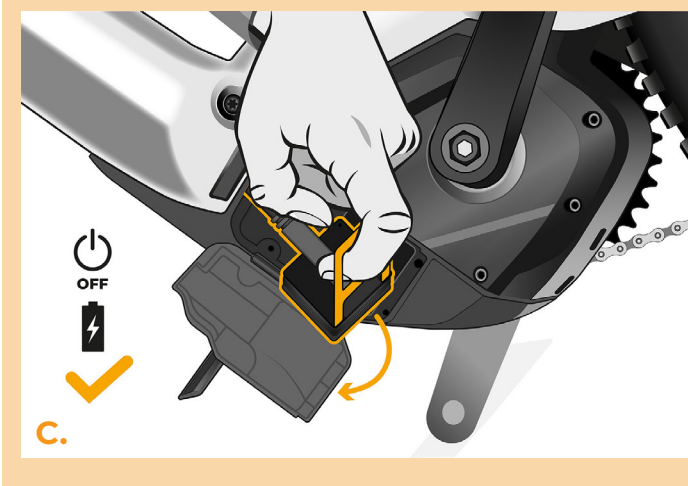
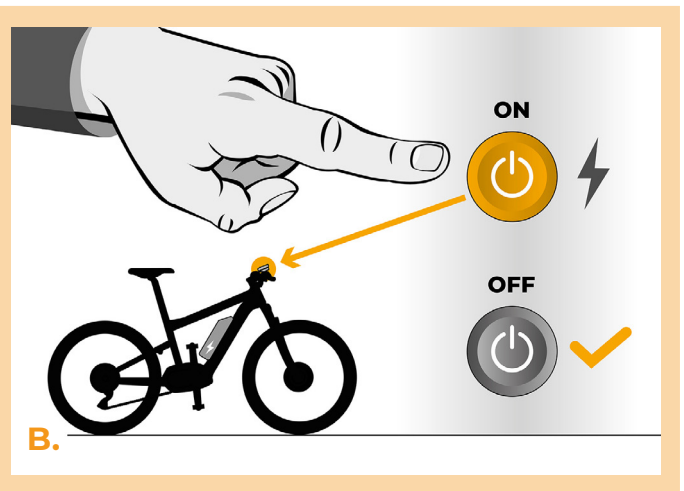
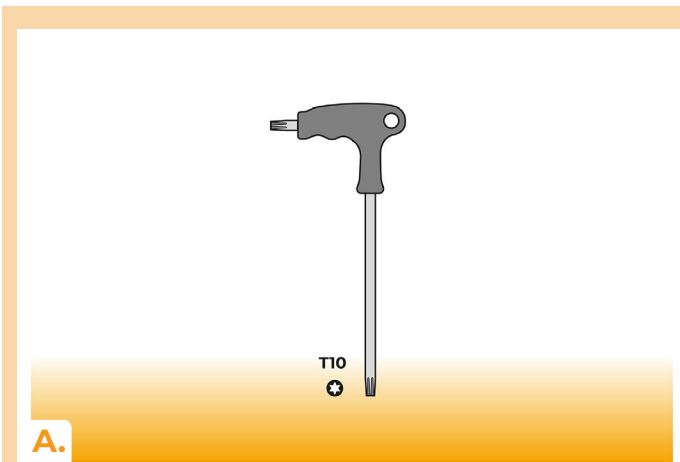


## SpeedBox 3.0 B.Tuning for Specialized

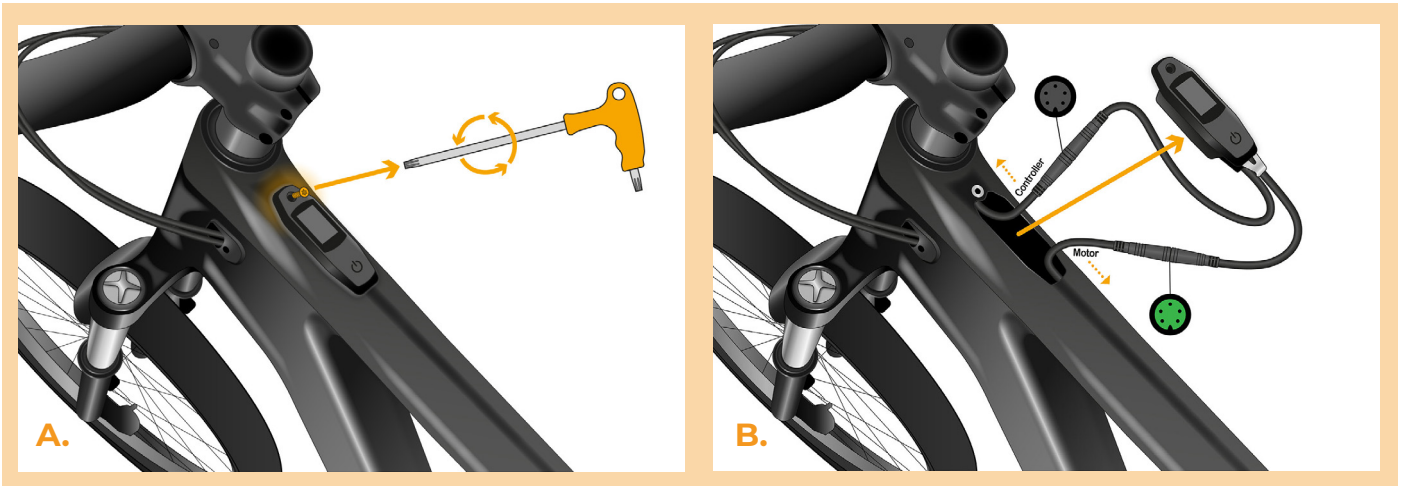
### STEP 1: Preparation for installaion

- A. Prepare a T10 Torx screwdriver.
- B. Turn off the e-bike.
- C. Unplug the battery from the e-bike according to the manufacturer's manual.



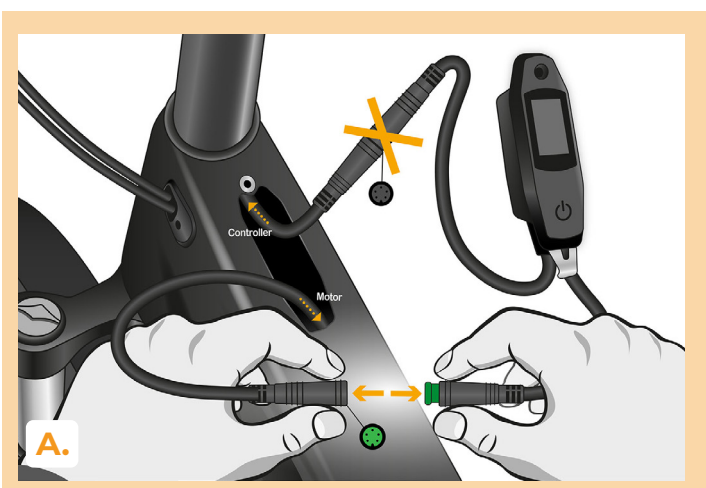
## STEP 2: Removing the TCU

- A. Using the T10 Torx screwdriver, unscrew the TCU from the e-bike frame.
- B. Pull the TCU out of the e-bike frame together with the connectors.



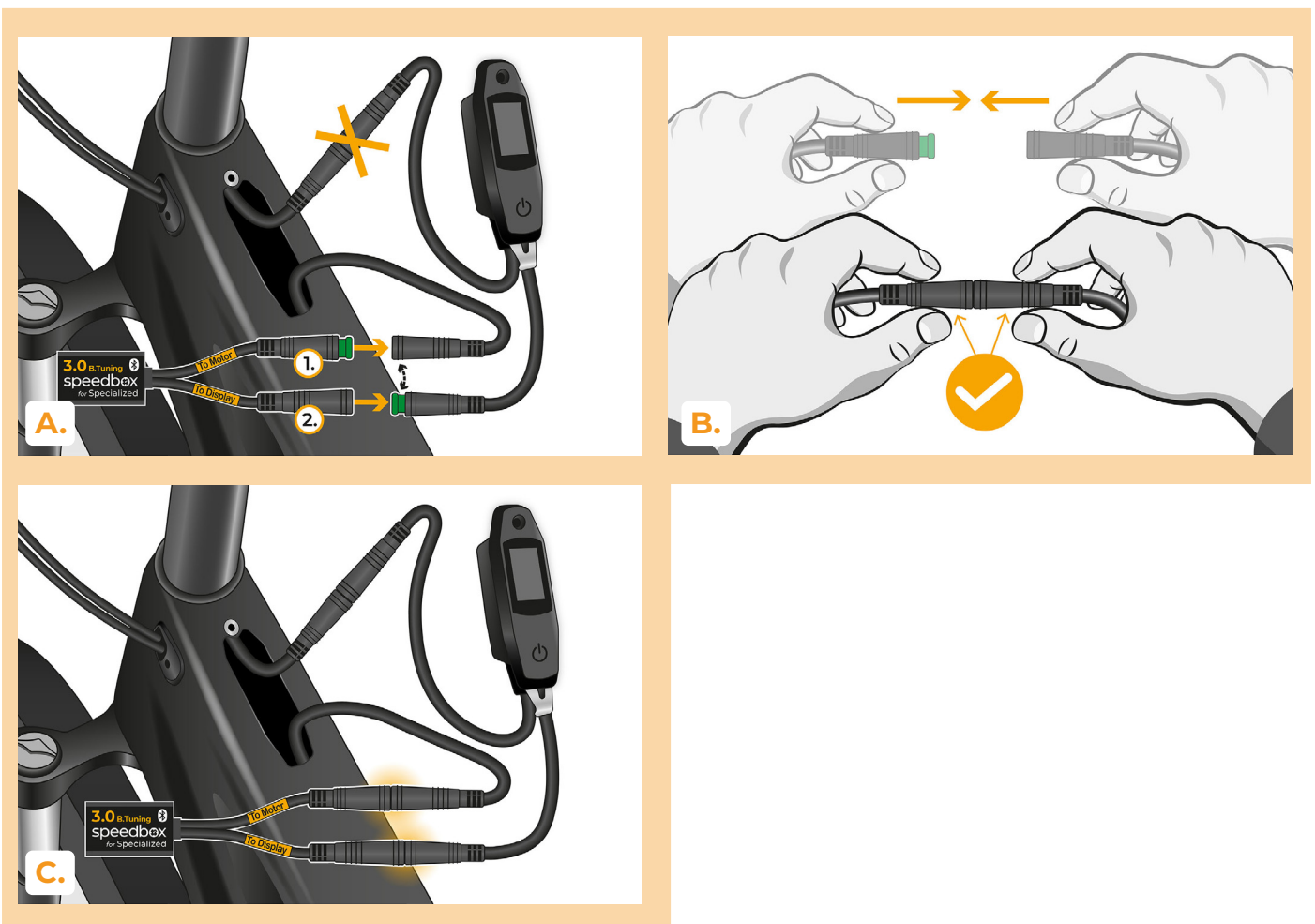
## STEP 3: Disconnecting the connectors from the motor

- A. Disconnect the connector of the cable leading to the motor.



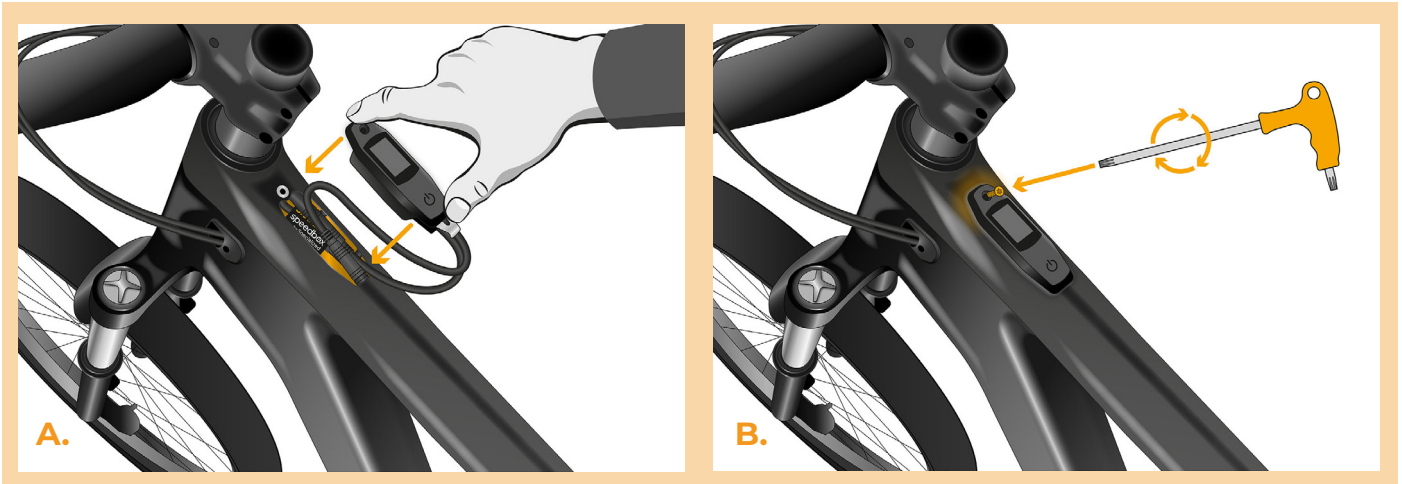
## STEP 4: SpeedBox tuning installation

- A.** Install the SpeedBox into the disconnected connectors between the TCU and the motor cable (step 3).
- B.** Make sure that the locks on the connectors are seated properly.
- C.** Before assembling the motor, check the correct wiring as shown in the figure.



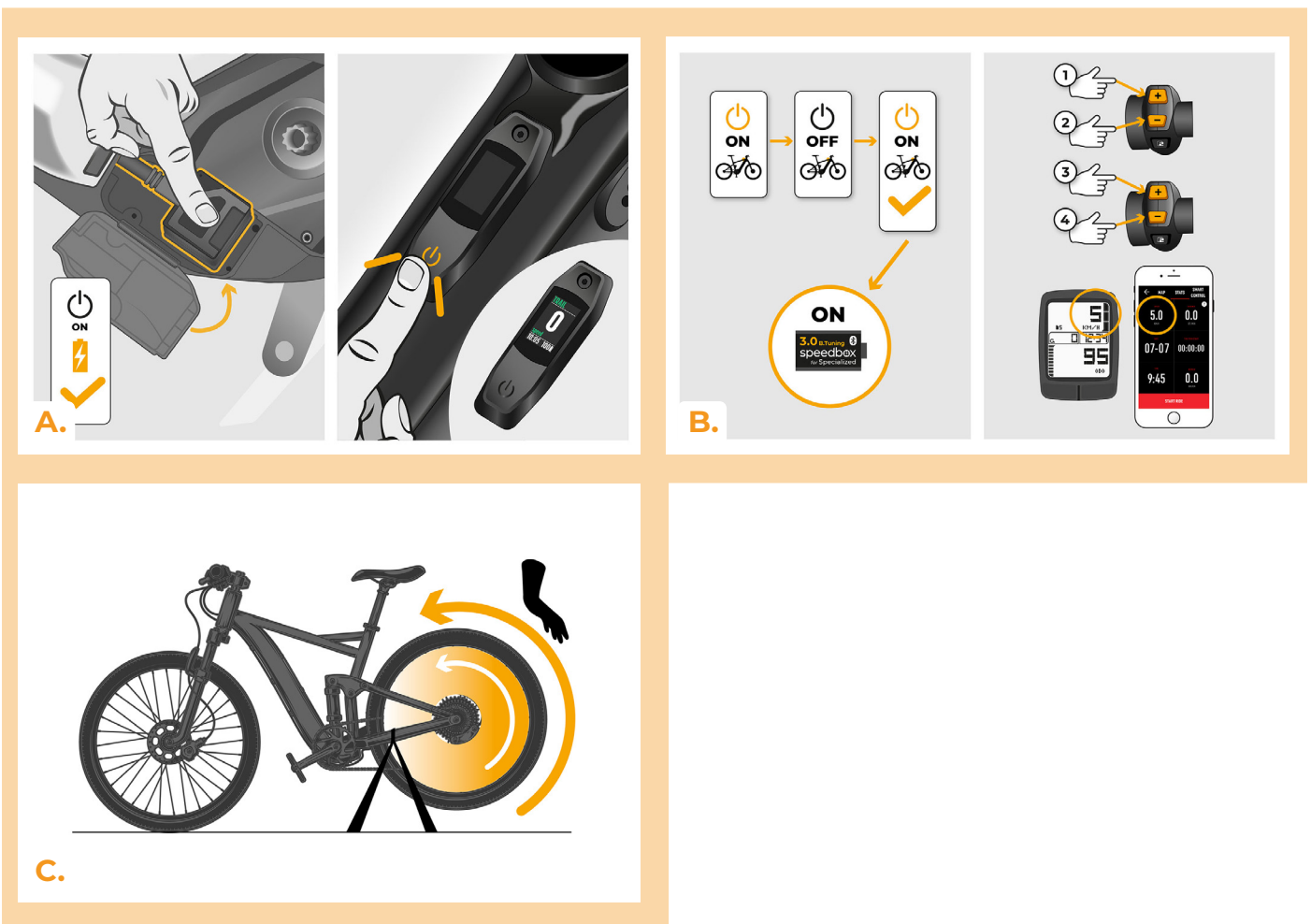
## STEP 5: TCU installation

- A. Place the TCU back into the e-bike frame together with the SpeedBox.
- B. Using the T10 Torx screwdriver, screw it back into the e-bike frame.



## STEP 6: Tuning function check

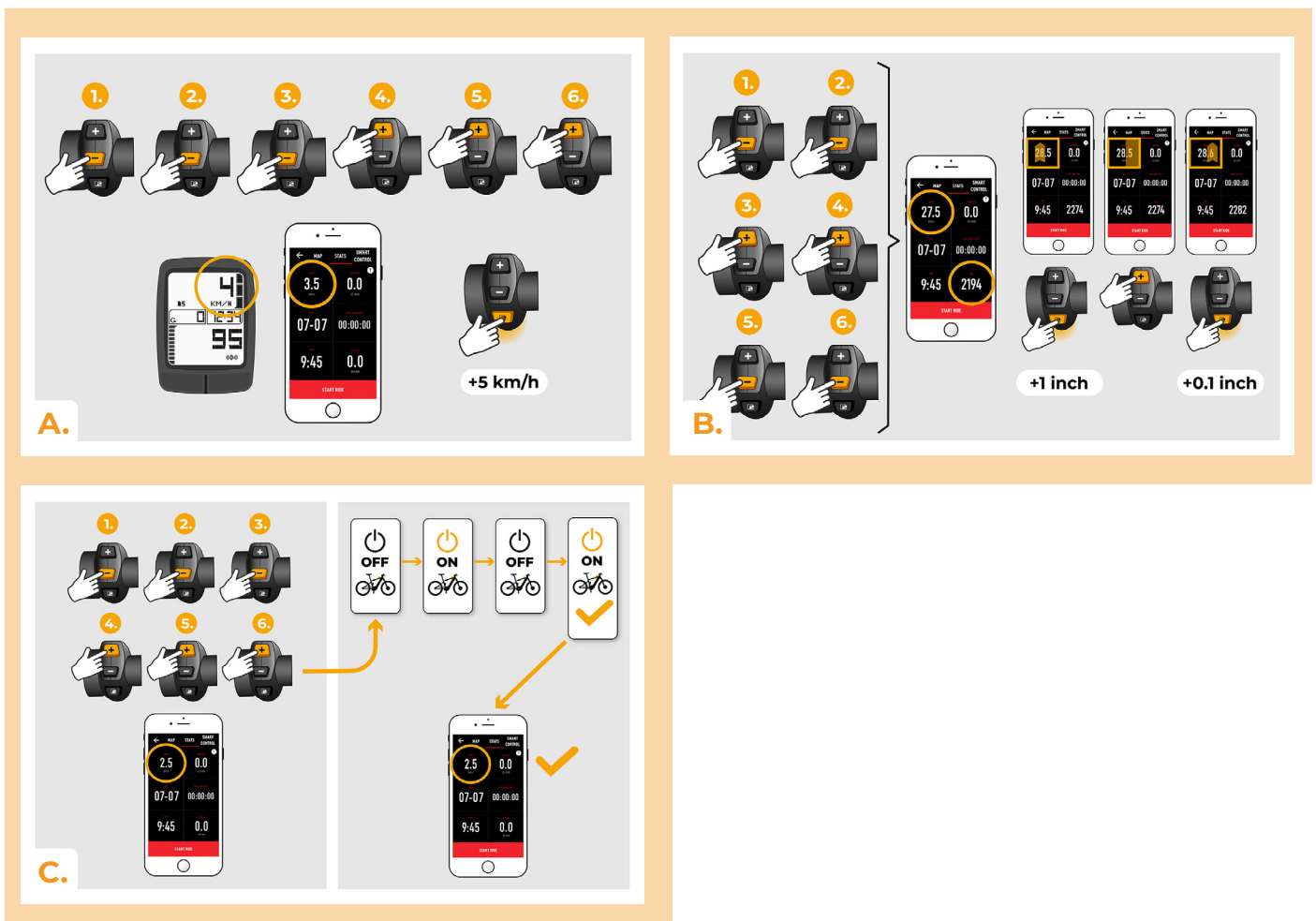
- A.** Plug the battery back in and turn on the e-bike.
- B.** SpeedBox will be activated after the second power-up of the e-bike with a preset maximum speed of 50 km/h.
- C.** Spin the rear wheel and make sure the speed is shown on the e-bike display.



## STEP 7: SpeedBox tuning setting

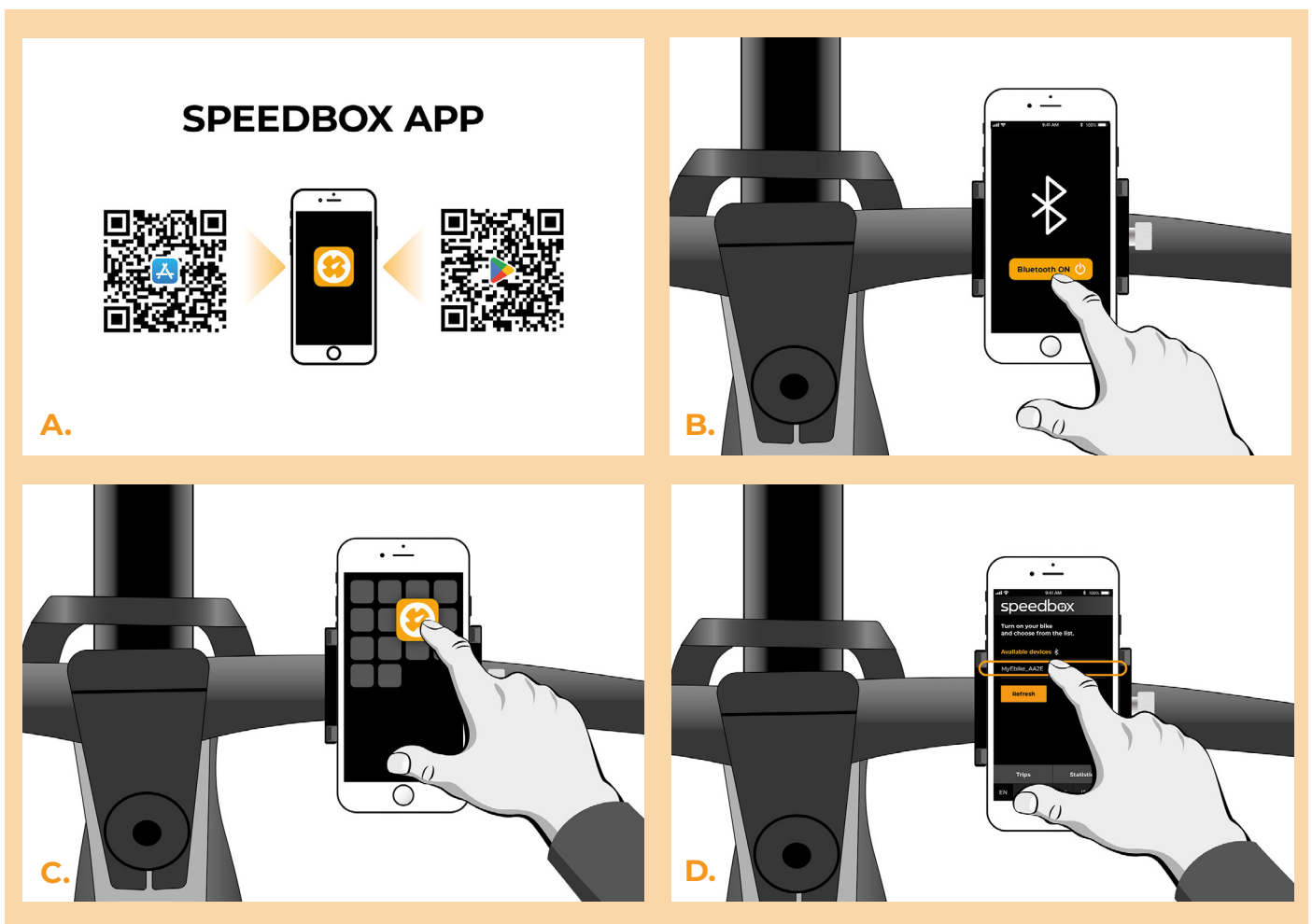
All changes will take effect only after the second restart of the e-bike.

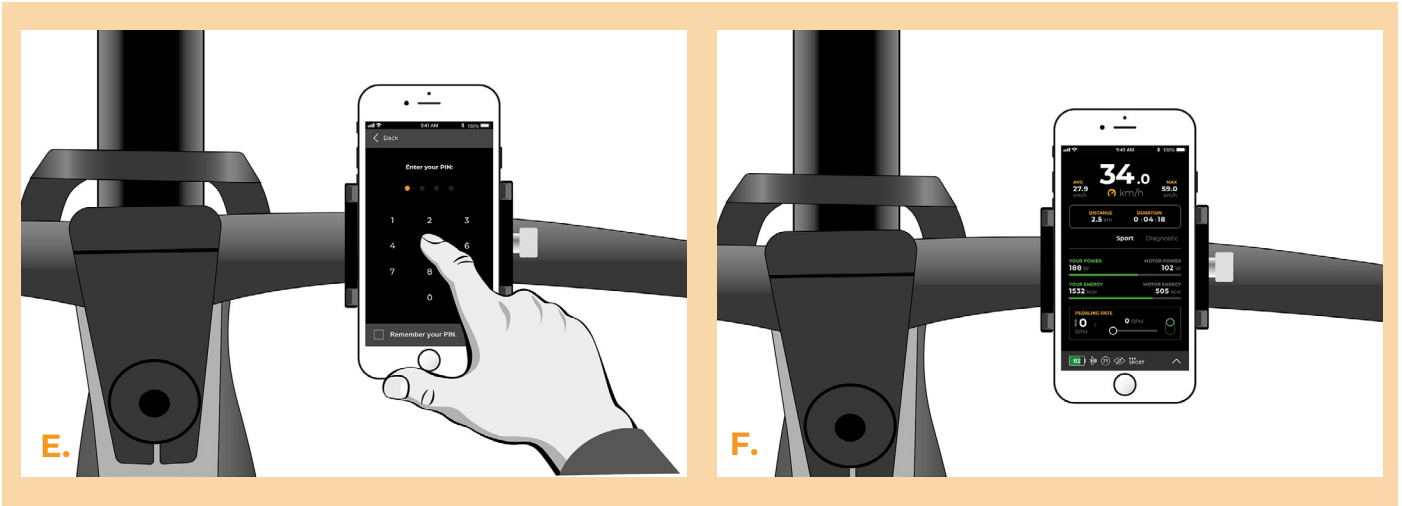
- A.** You can set the maximum speed limit by switching the modes: - - - + + +. The default speed limit (25 km/h) will then appear on the display. You can change the maximum speed limit by brief activation of the WALK function. The value of 2.5 km/h on the display corresponds to the limit of 25 km/h, 5.0 km/h corresponds to the limit of 50 km/h, 9.9 km/h corresponds to 99 km/h, etc. Some types of displays may round to whole numbers. The last displayed limit will be saved after five seconds of inactivity.
- B.** You can set the real wheel circumference by switching the modes: - - + + - -. The display will then show the set wheel diameter in inches. The value of 27.5 km/h corresponds to a diameter of 27.5", i.e. a circumference of 2194 mm. By brief activation of the WALK function, you will increase the diameter of the wheel by units of inches. By switching the mode and briefly activating the WALK function, you will then increase the diameter of the wheel by tenths of an inch.
- C.** Attention! Before uninstalling the SpeedBox, set the speed limit back to 25 km/h. All settings will take effect only after the second restart of the e-bike.



## STEP 8: Pairing SpeedBox with the SpeedBox App

- A.** Install the SpeedBox App from Google Play or App Store.
- B.** Turn on Bluetooth on your phone.
- C.** Open the SpeedBox App. Enable location services if prompted.
- D.** Select the device MyEbike\_xxxx. If you do not see it in the list, click on the “Refresh” button and, if necessary, make sure that:
  1. Your e-bike is switched on.
  2. You are not further than 5 m from your e-bike.
  3. You have Bluetooth turned on on your mobile phone.
  4. You have enabled location services for the SpeedBox App.
- E.** Choose and confirm your PIN and service password.
- F.** Now you can fully enjoy the SpeedBox App (control tuning, monitor riding data, and information about motor performance and energy consumption, you can set the speed limit, etc.).





[www.speedbox-tuning.com](http://www.speedbox-tuning.com)

Ebike Electronic s.r.o.

Rybna 716/24 | 110 00 Praha 1 | Czech Republic | ID: 05553555 | VAT: CZ05553555

