

## SpeedBox 2.0 B.Tuning for Bosch (excl. Gen4)

### STEP 1: Preparation for installation

**A.** Prepare the following tools:

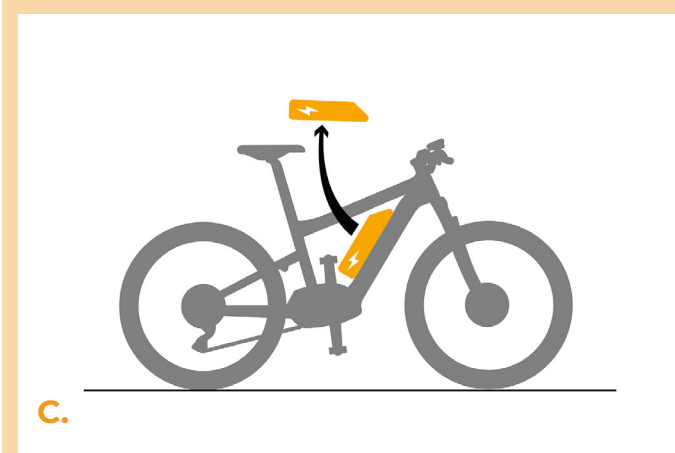
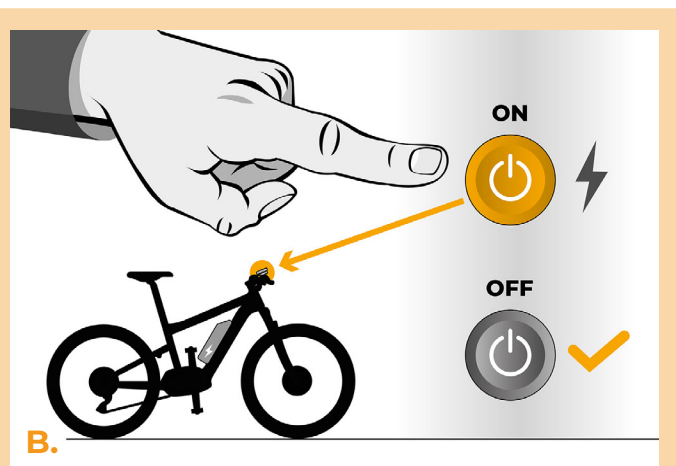
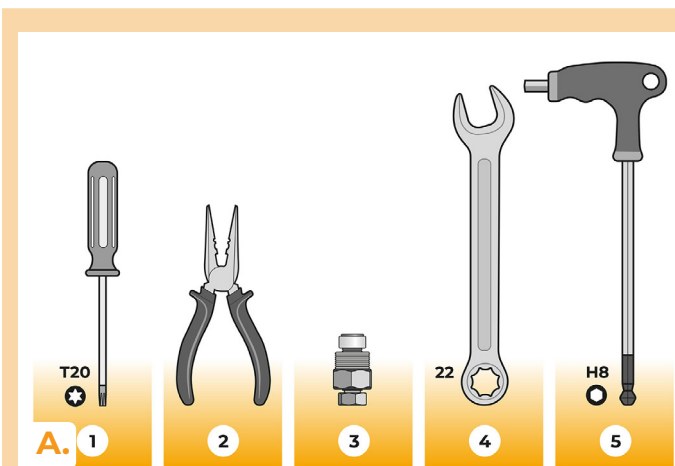
1. T20 Torx screwdriver
2. Needle nose plier

*If crank removal is necessary, you will need:*

3. Crank puller
4. Wrench 22 mm
5. Hex Key H8

**B.** Turn off the e-bike.

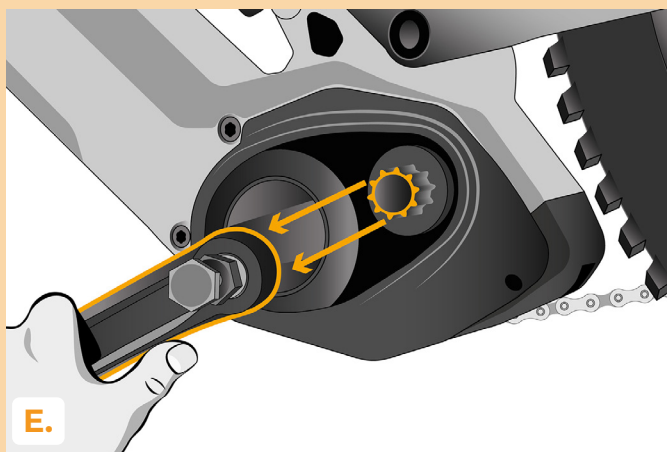
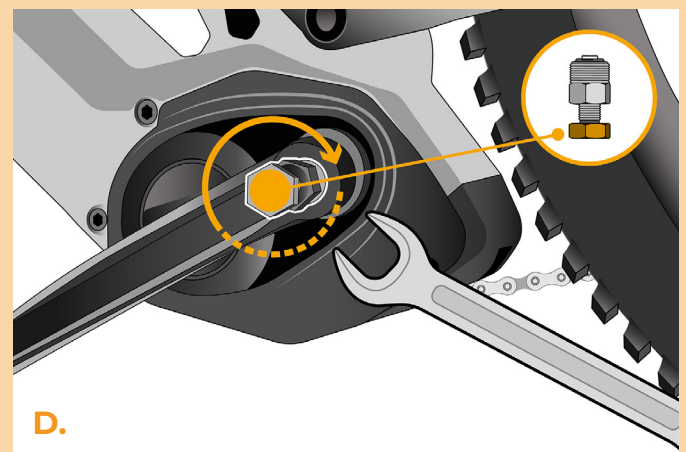
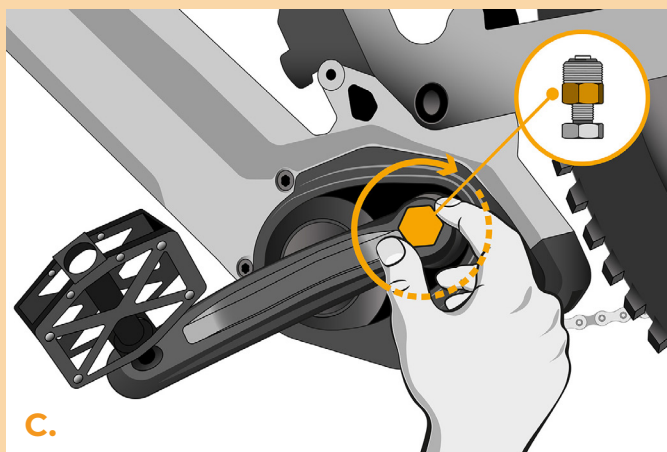
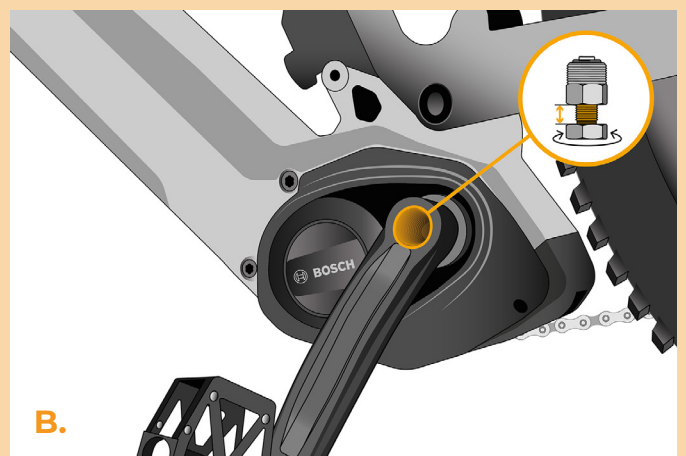
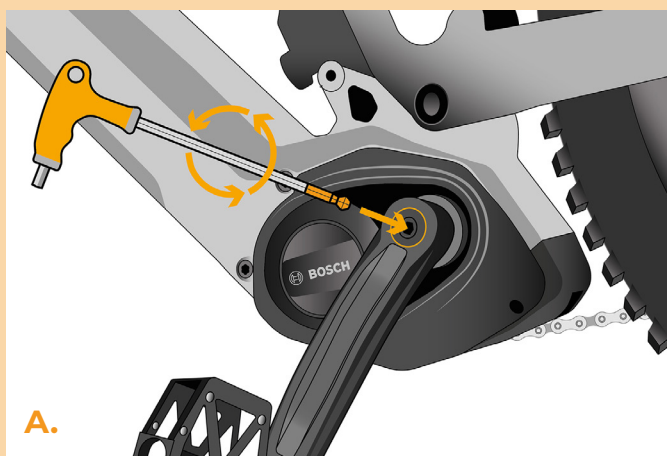
**C.** Remove the battery from the e-bike according to the manufacturer's manual.



## STEP 2: Crank removal

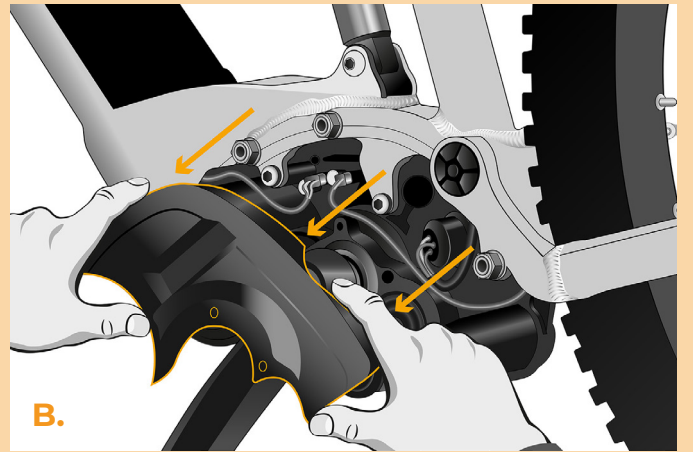
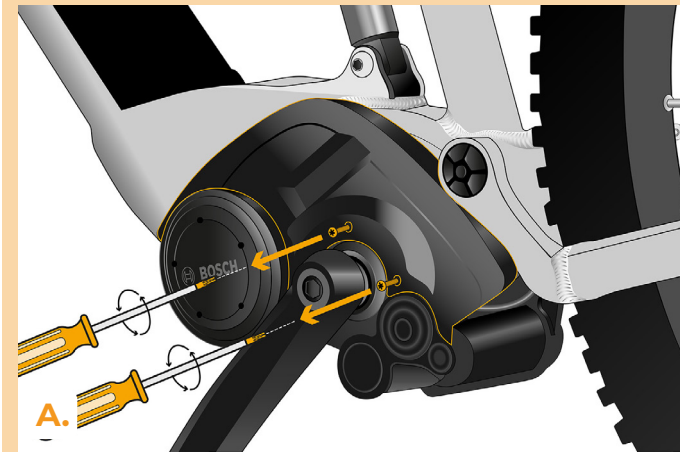
*If the crank interferes with the removal of the plastic engine cover, it must be dismantled.*

- A.** Remove the crank bolt of the left crank arm using the hex key H8.
- B.** Before screwing the crank puller into the crank arm, unscrew the crank puller's "nut" as far as possible from the "bolt". You will prevent the thread on the crank arm from being pulled off.
- C.** Screw the crank puller into the crank arm and tighten it with the 22 mm wrench.
- D.** Continue fastening the crank puller "bolt" with the 22 mm wrench until the crank arm pulls free of the central axis.
- E.** Remove the crank arm from the central axis of the motor.



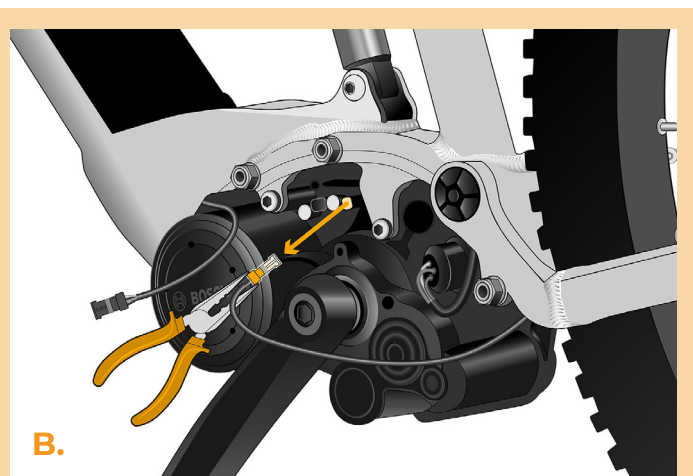
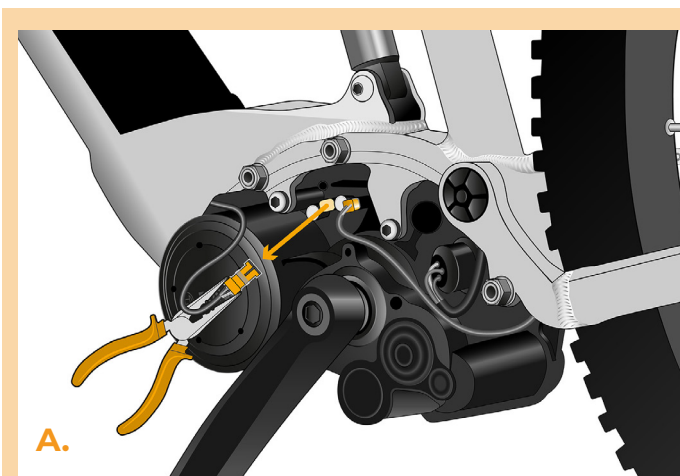
## STEP 3: Motor cover removal

- A.** Unscrew the 2 screws holding the motor cover with the T20 Torx screwdriver.
- B.** Remove the motor cover.



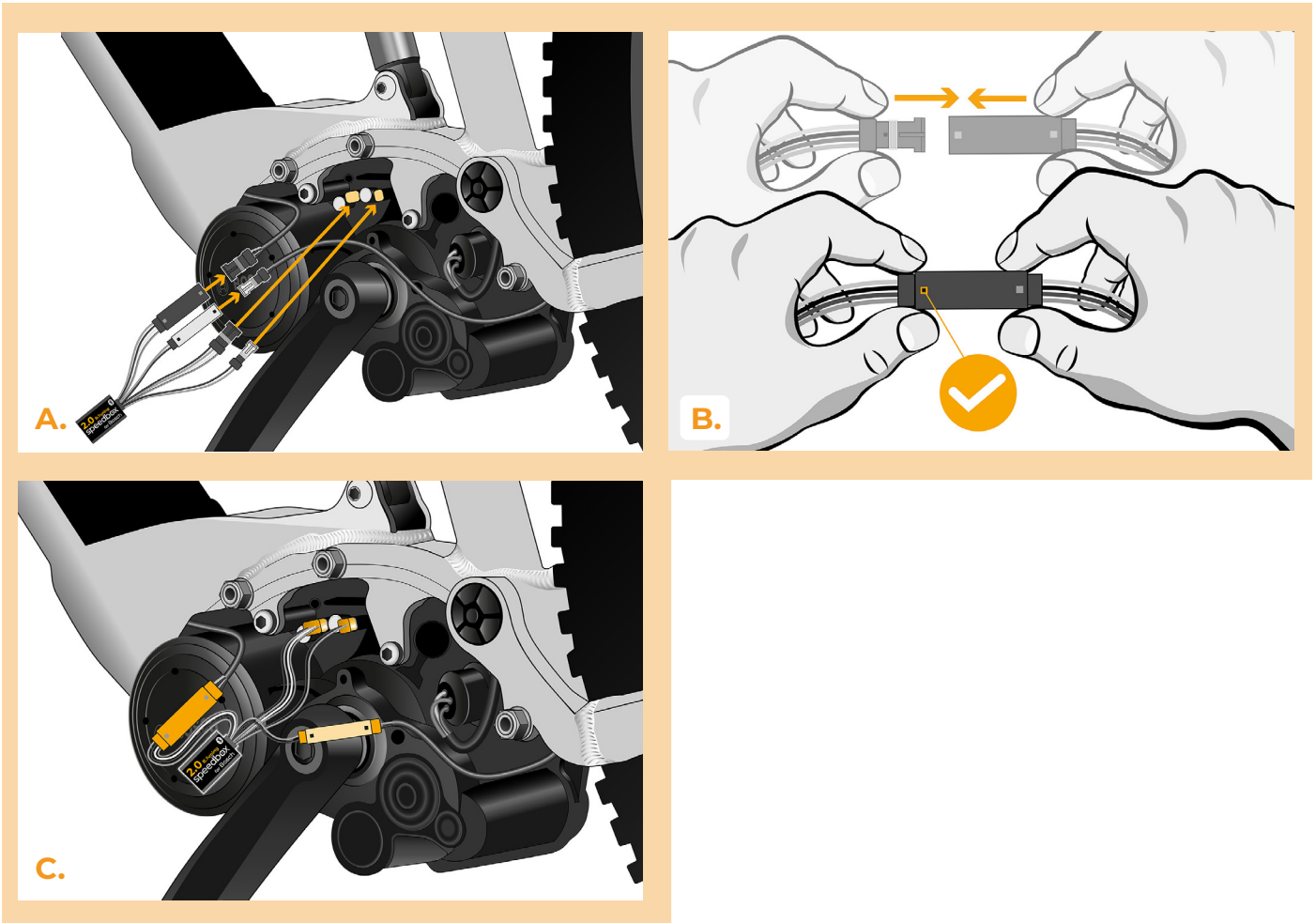
## STEP 4: Disconnecting the connectors from the motor

- A.** Using pliers, disconnect the display connector from the motor.
- B.** Disconnect the speed sensor connector in the same manner.



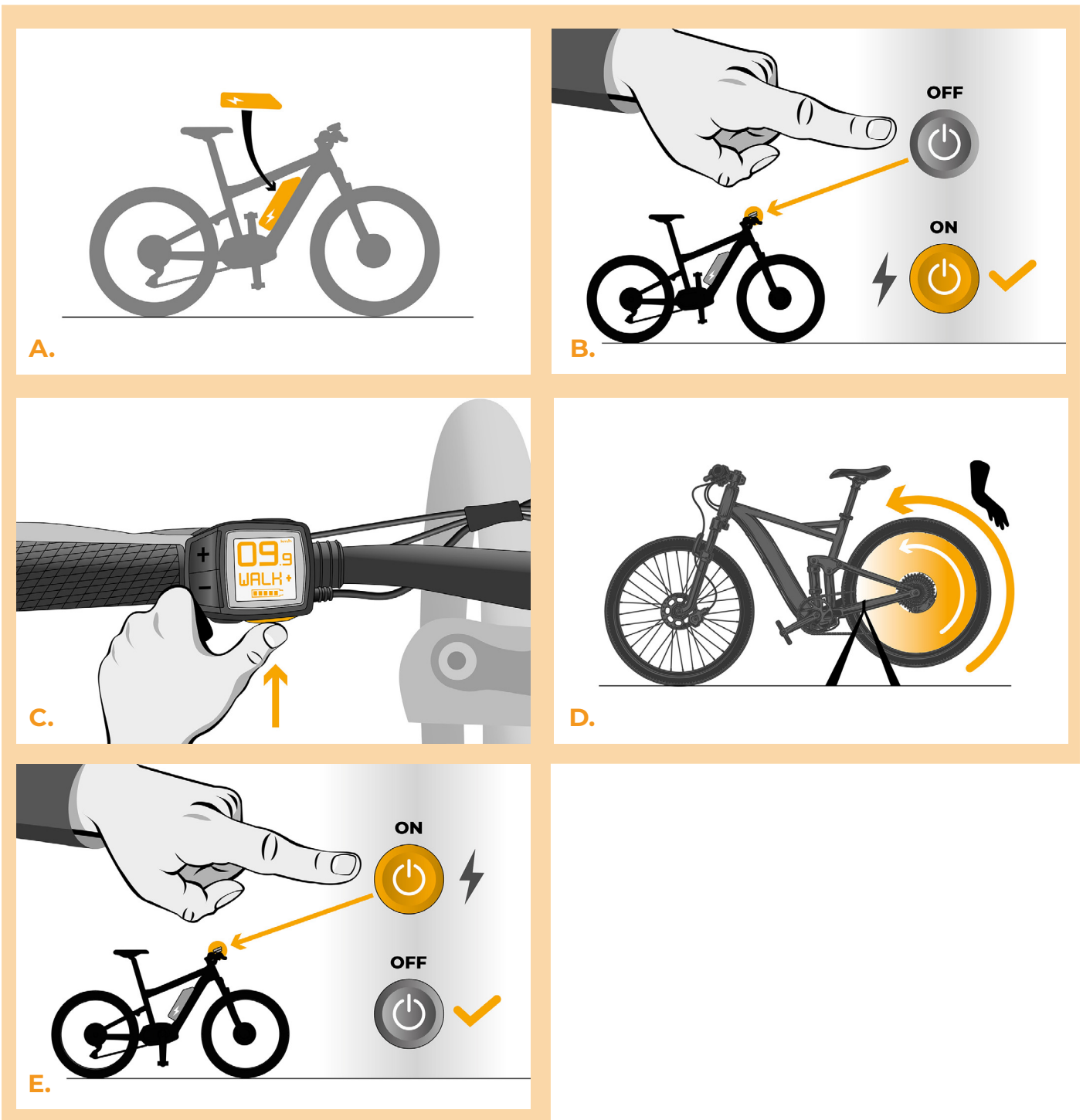
## STEP 5: SpeedBox tuning installation

- A.** Replace the original connectors with the SpeedBox connectors.
- B.** Plug the e-bike connectors, disconnected from the motor (step 4), into the SpeedBox connectors and make sure that the locks on the connectors are seated properly.
- C.** Before assembling the motor, check the correct wiring as shown in the figure.



## STEP 6: Tuning function check

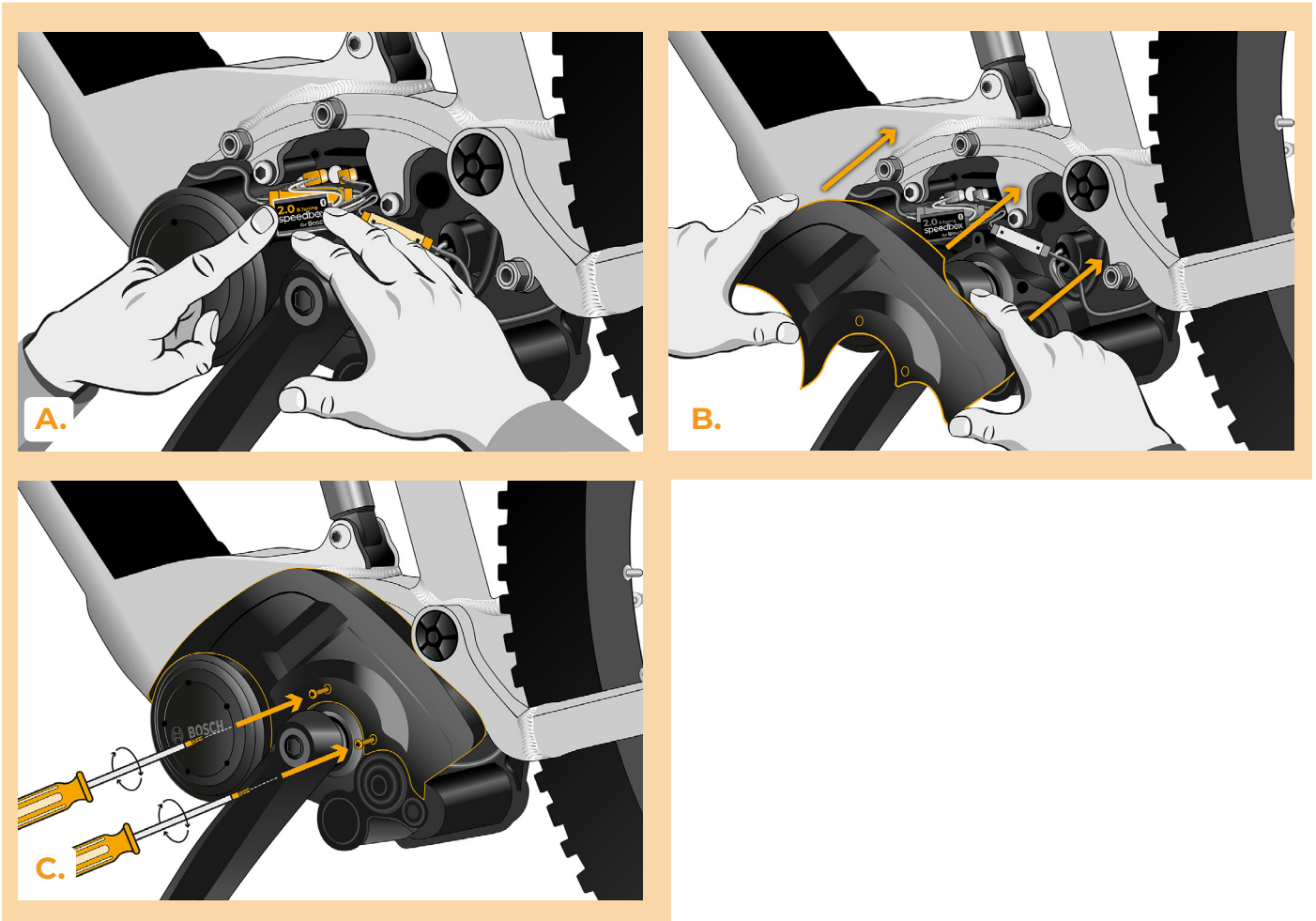
- A.** Place the battery back into the e-bike.
- B.** Turn the e-bike on.
- C.** Activate/deactivate tuning by brief activation of the WALK function or by switching between two assistance modes twice (+--+). The value of 9.9 or 2.5 indicating the maximum speed will be displayed.
- D.** Spin the rear wheel and make sure the rear wheel speed is shown on the e-bike display.
- E.** Turn the e-bike off.





## STEP 7: Motor cover assembly

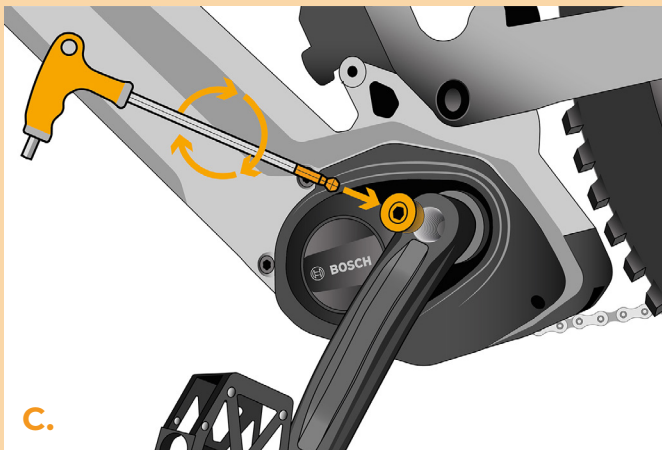
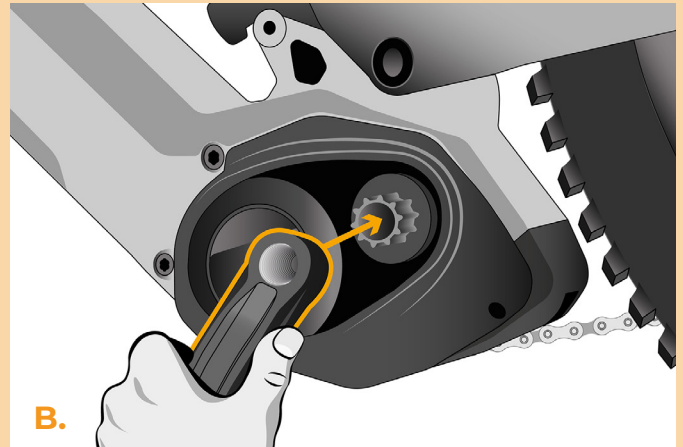
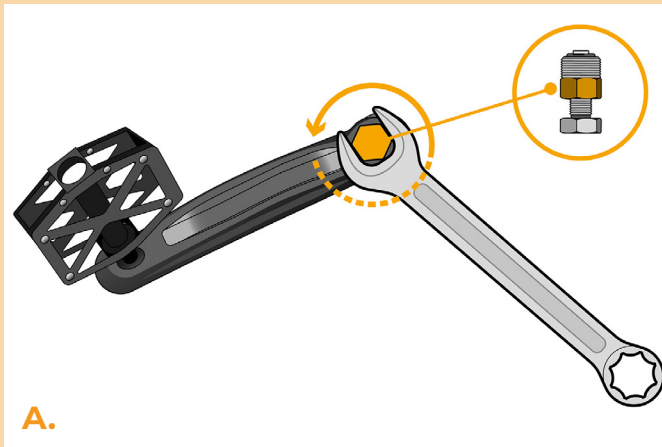
- A.** Fit the SpeedBox and all connectors and wires leading from the motor into the free space in the motor.
- B.** Place the motor cover back to its original position.
- C.** Attach the motor cover with two screws using a T20 Torx screwdriver.



## STEP 8: Crank assembly

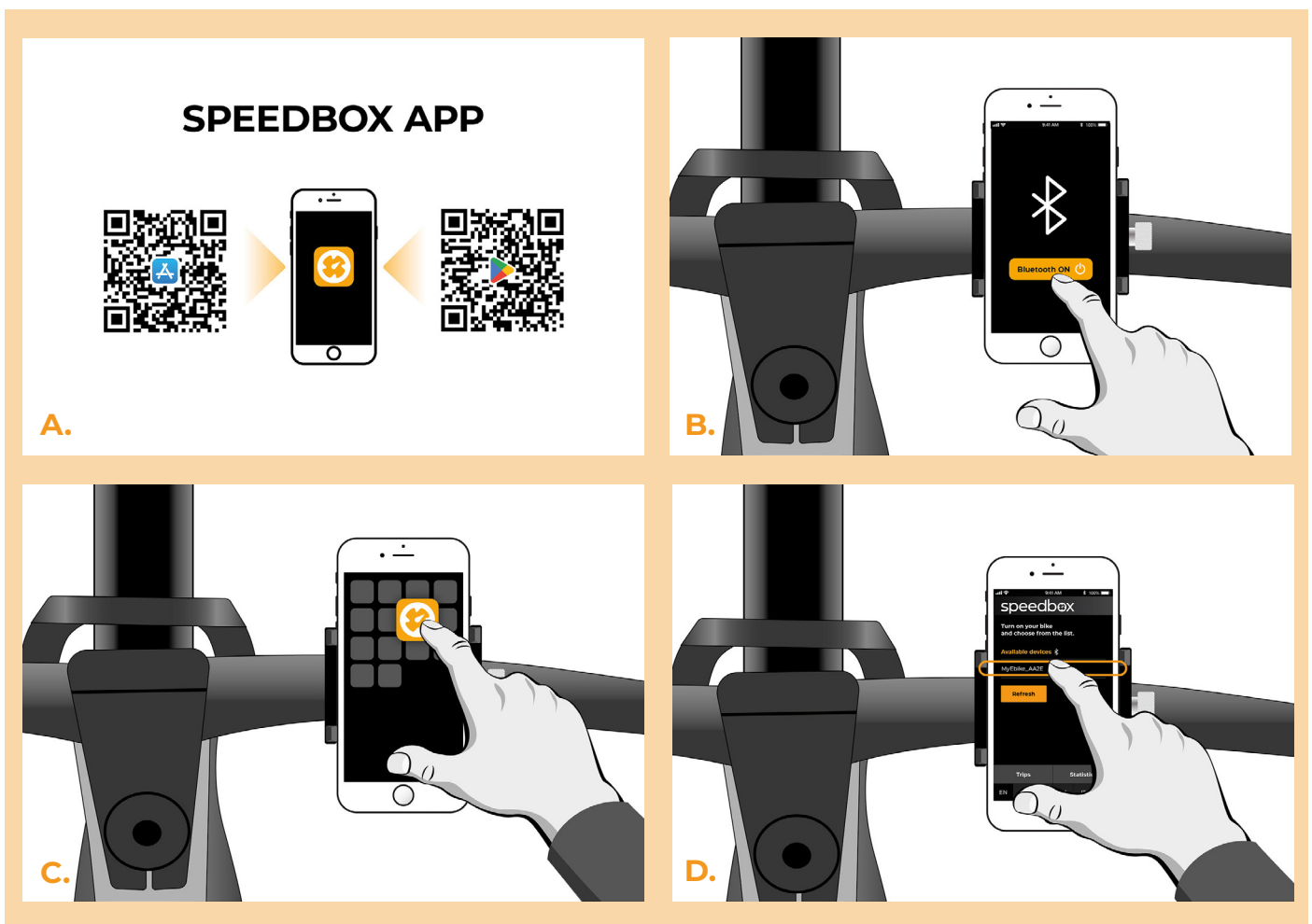
*If you have removed the crank according to Step 2, install it back.*

- A.** Using a 22 mm wrench, remove the crank puller from the crank arm.
- B.** Put the crank arm back to the central axis of the e-bike motor.
- C.** Screw the crank bolt into the crank arm and tighten it with the Hex Key H8.

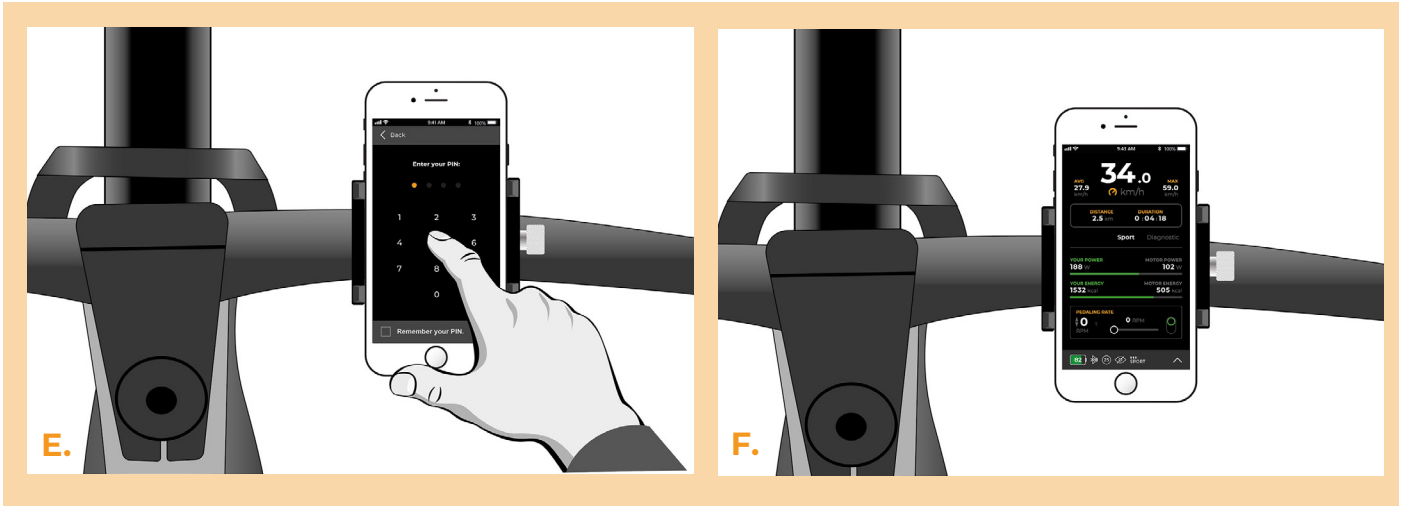


## STEP 9: Pairing SpeedBox with the SpeedBox App

- A.** Install the SpeedBox App from Google Play or App Store.
- B.** Turn on Bluetooth on your phone.
- C.** Open the SpeedBox App. Enable location services if prompted.
- D.** Select the device MyEbike\_xxxx. If you do not see it in the list, click on the “Refresh” button and, if necessary, make sure that:
  1. Your e-bike is switched on.
  2. You are not further than 5 m from your e-bike.
  3. You have Bluetooth turned on on your mobile phone.
  4. You have enabled location services for the SpeedBox App.
- E.** Choose and confirm your PIN and service password.
- F.** Now you can fully enjoy the SpeedBox App (control tuning, monitor riding data, and information about motor performance and energy consumption, you can set the speed limit, etc.).







[www.speedbox-tuning.com](http://www.speedbox-tuning.com)

Ebike Electronic s.r.o.

Rybna 716/24 | 110 00 Praha 1 | Czech Republic | ID: 05553555 | VAT: CZ05553555



