

SpeedBox 3.0 for Bosch (incl. Gen4)

STEP 1: Preparation for installaion:

A. Prepare the following tools:

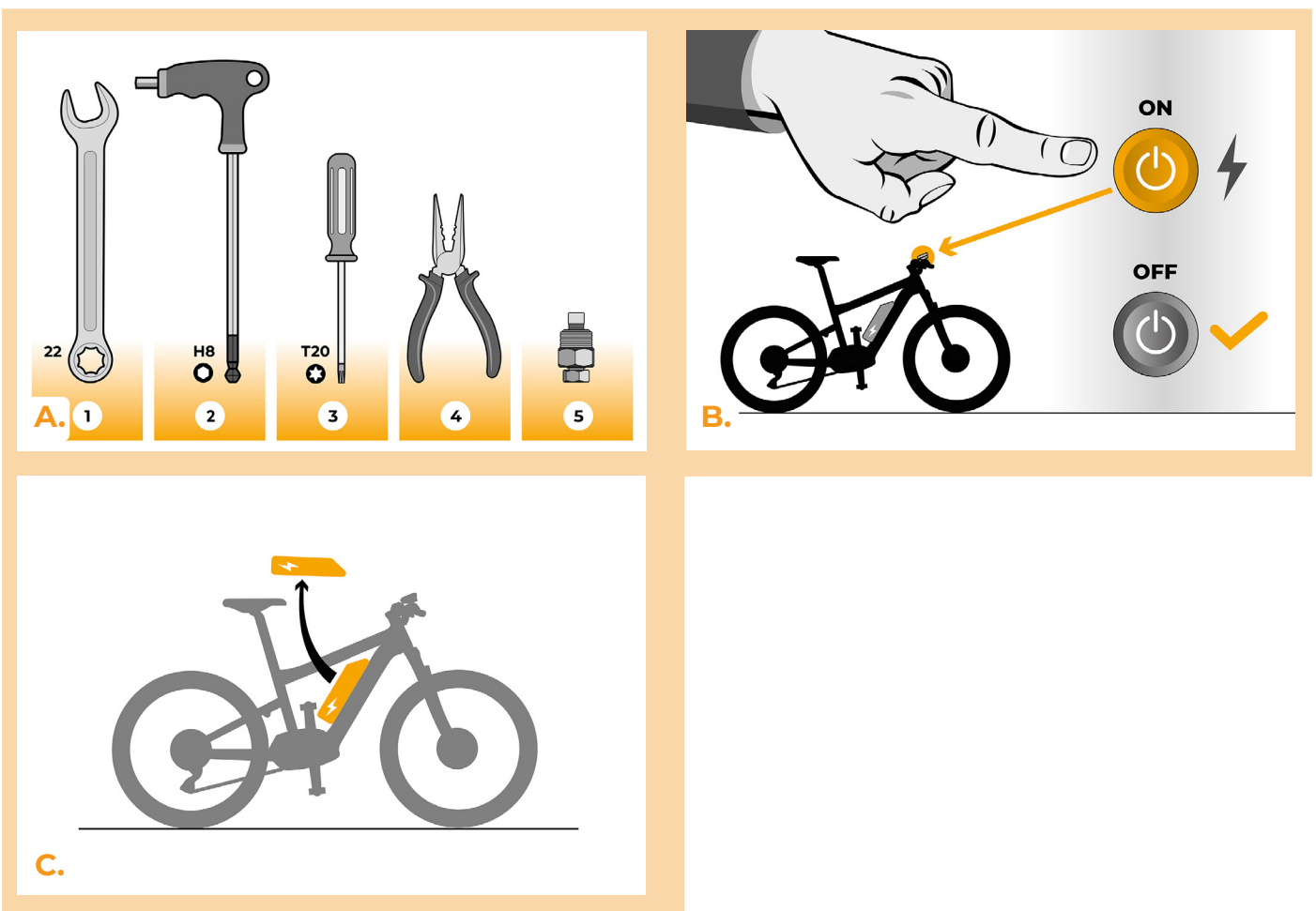
1. T20 Torx screwdriver
2. Needle nose plier

If crank removal is necessary, you will need:

3. Crank puller
4. Wrench 22 mm
5. Hex Key H8

B. Turn off the e-bike.

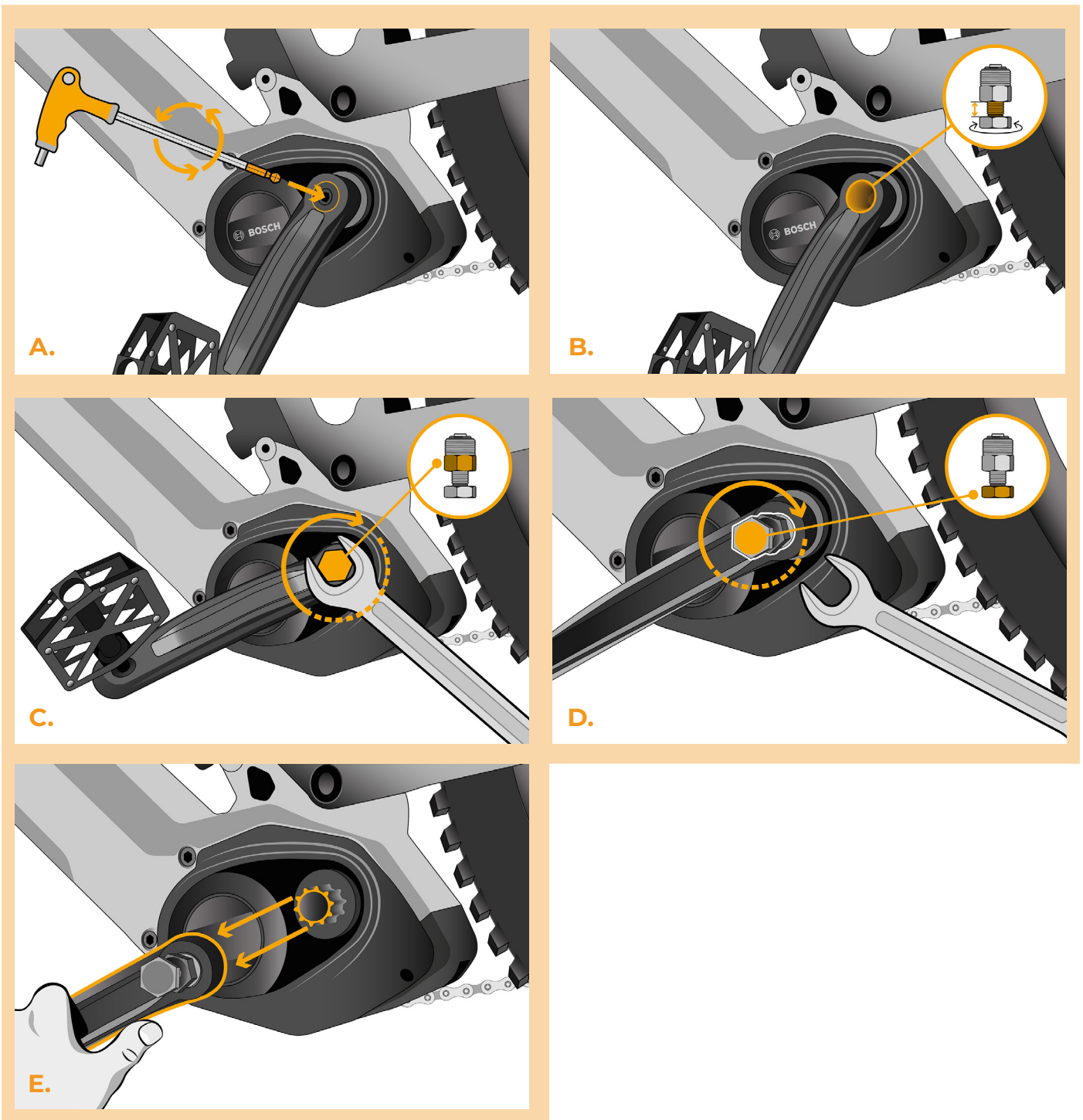
C. Remove the battery from the e-bike according to the manufacturer's manual.



STEP 2: Crank removal

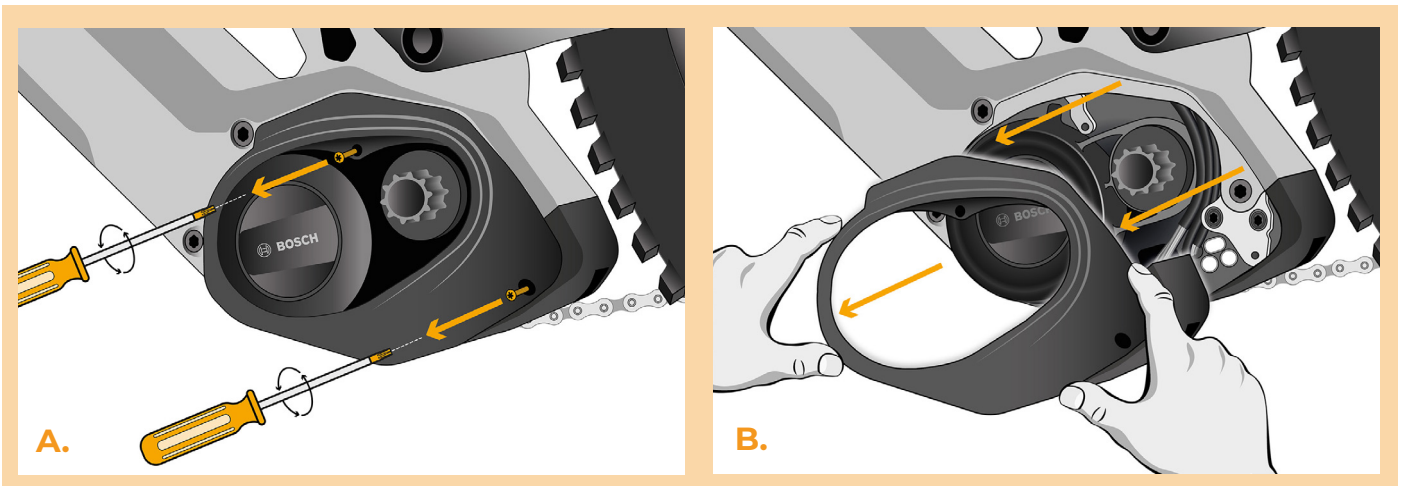
If the crank interferes with the removal of the plastic engine cover, it must be dismantled.

- A.** Remove the crank bolt of the left crank arm using the hex key H8.
- B.** Before screwing the crank puller into the crank arm, unscrew the crank puller's "nut" as far as possible from the "bolt".
- C.** Screw the crank puller into the crank arm and tighten it with the 22 mm wrench.
- D.** Continue fastening the crank puller's "bolt" with the 22 mm wrench until the crank arm pulls free of the central axis.
- E.** Remove the crank arm from the central axis of the motor.



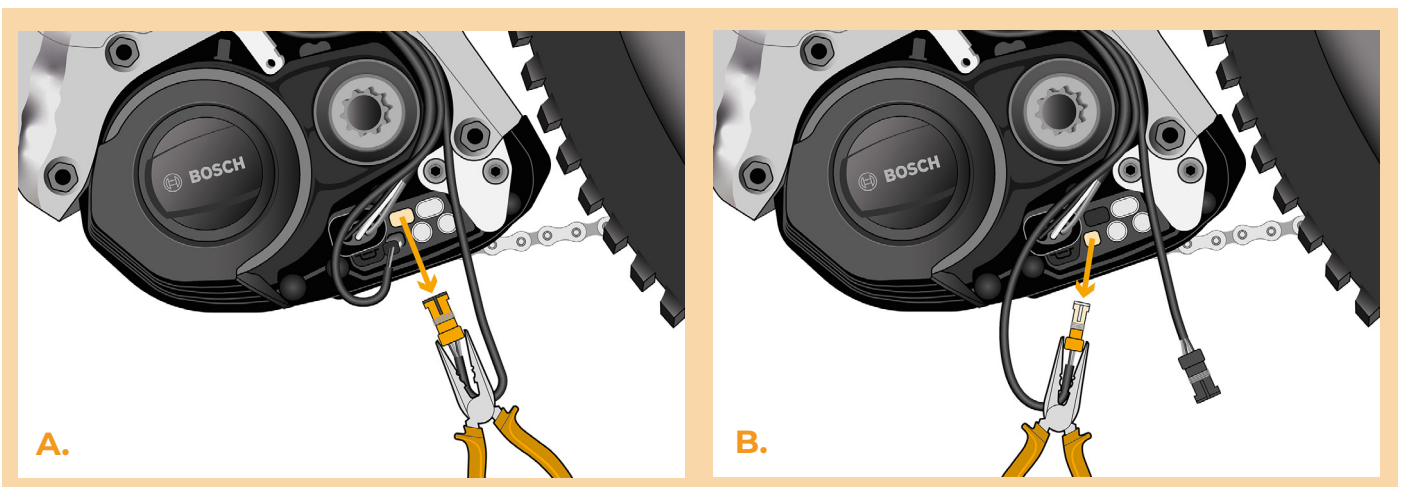
STEP 3: Motor cover removal

- A. Unscrew the 2 screws holding the motor cover with the T20 Torx screwdriver.
- B. Remove the motor cover.



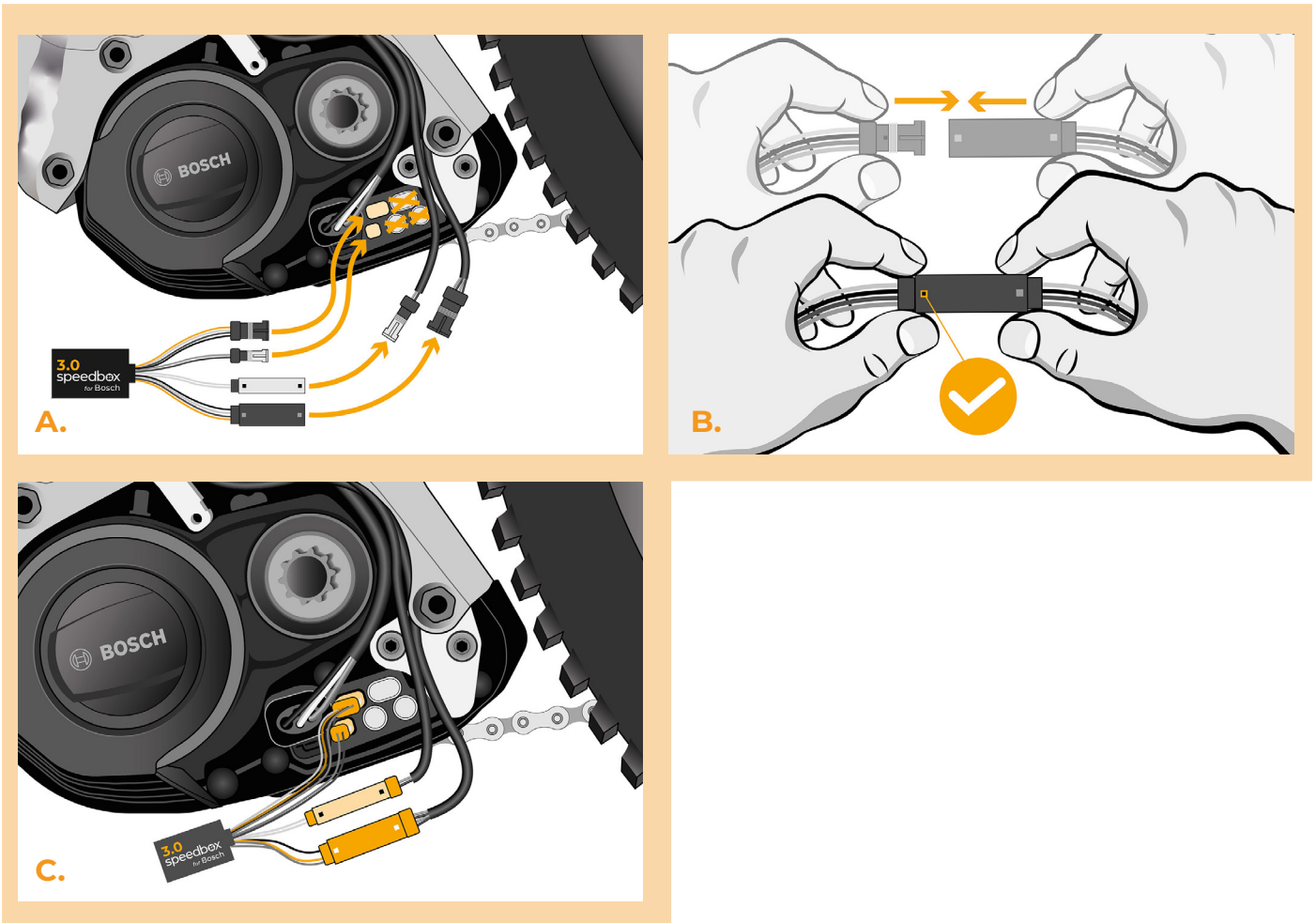
STEP 4: Disconnecting the connectors from the motor

- A. Using pliers, disconnect the display connector from the motor.
- B. Disconnect the speed sensor connector in the same manner.



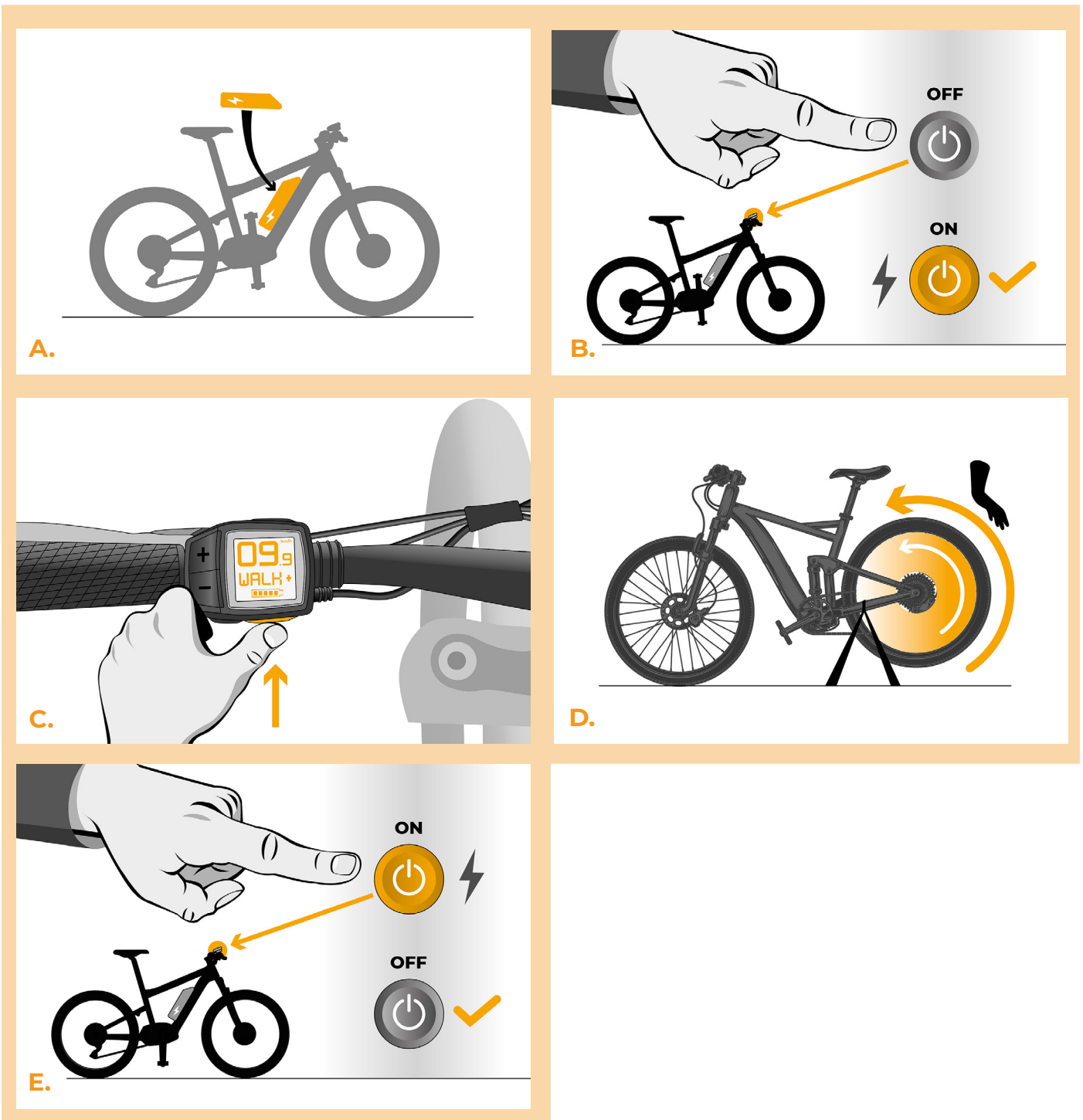
STEP 5: SpeedBox tuning installation

- A.** Replace the original connectors with the SpeedBox connectors.
- B.** Plug the e-bike connectors, disconnected from the motor (step 4), into the SpeedBox connectors and make sure that the locks on the connectors are seated properly.
- C.** Before assembling the motor, check the correct wiring as shown in the figure.



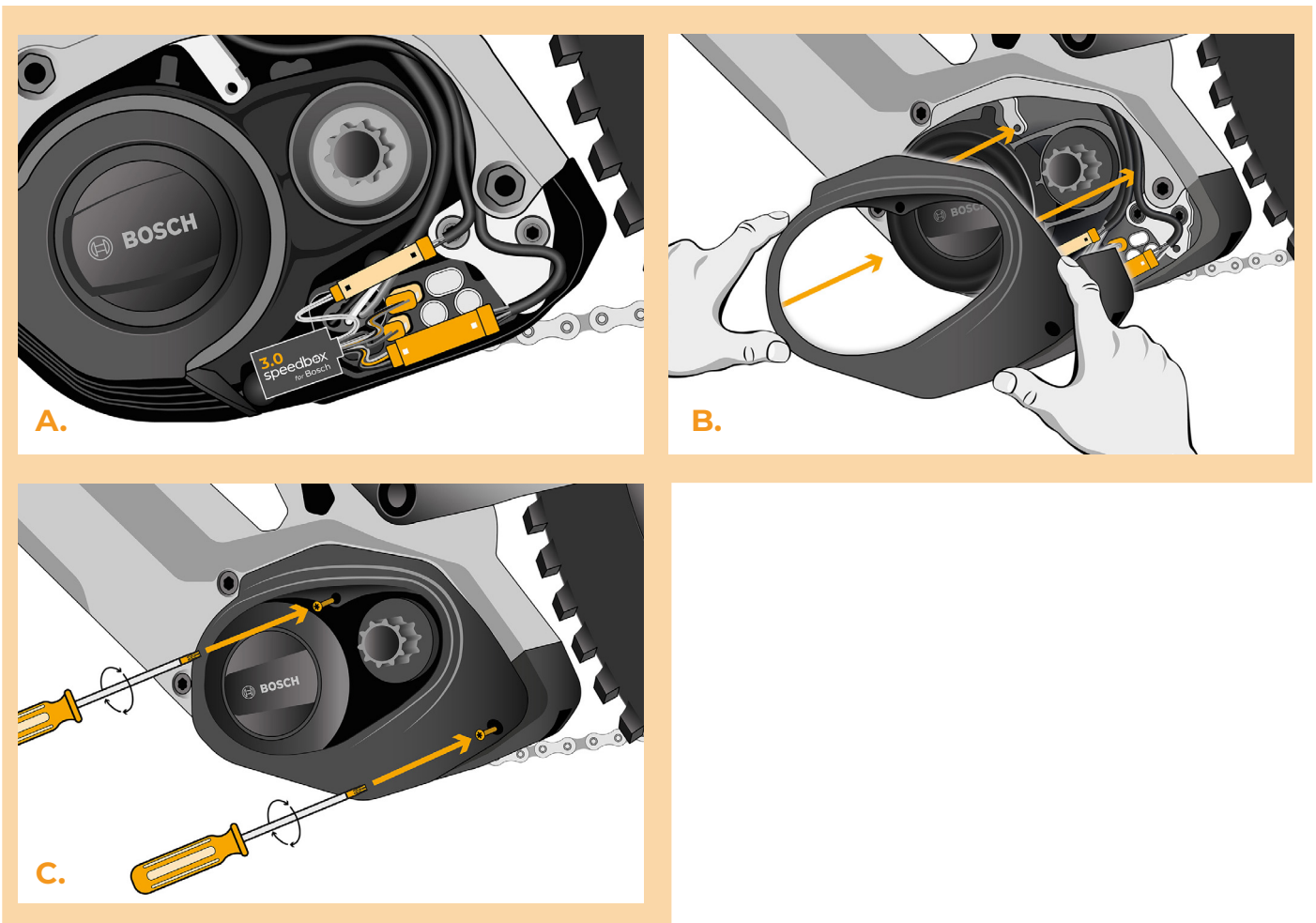
STEP 6: Tuning function check

- A. Place the battery back into the e-bike.
- B. Turn the e-bike on.
- C. Activate/deactivate tuning by brief activation of the WALK function or by switching between two assistance modes twice (+-+). The value of 9.9 or 2.5 indicating the maximum speed will be displayed.
- D. Spin the rear wheel and make sure the rear wheel speed is shown on the e-bike display.
- E. Turn the e-bike off.



STEP 7: Motor cover assembly

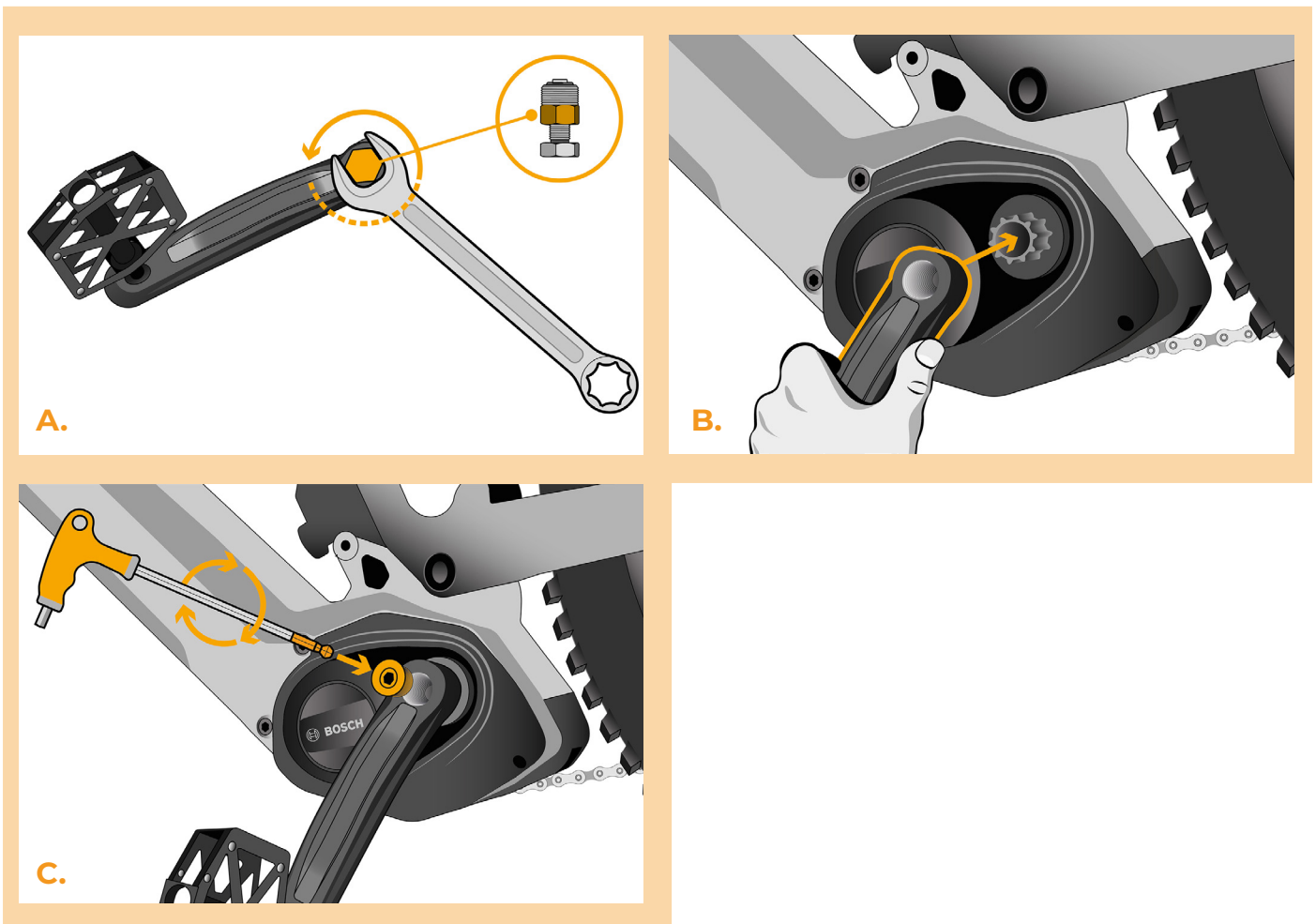
- A.** Fit the SpeedBox and all connectors and wires leading from the motor into the free space in the motor.
- B.** Place the motor cover back to its original position.
- C.** Attach the motor cover with two screws using a T20 Torx screwdriver.



STEP 8: Crank assembly

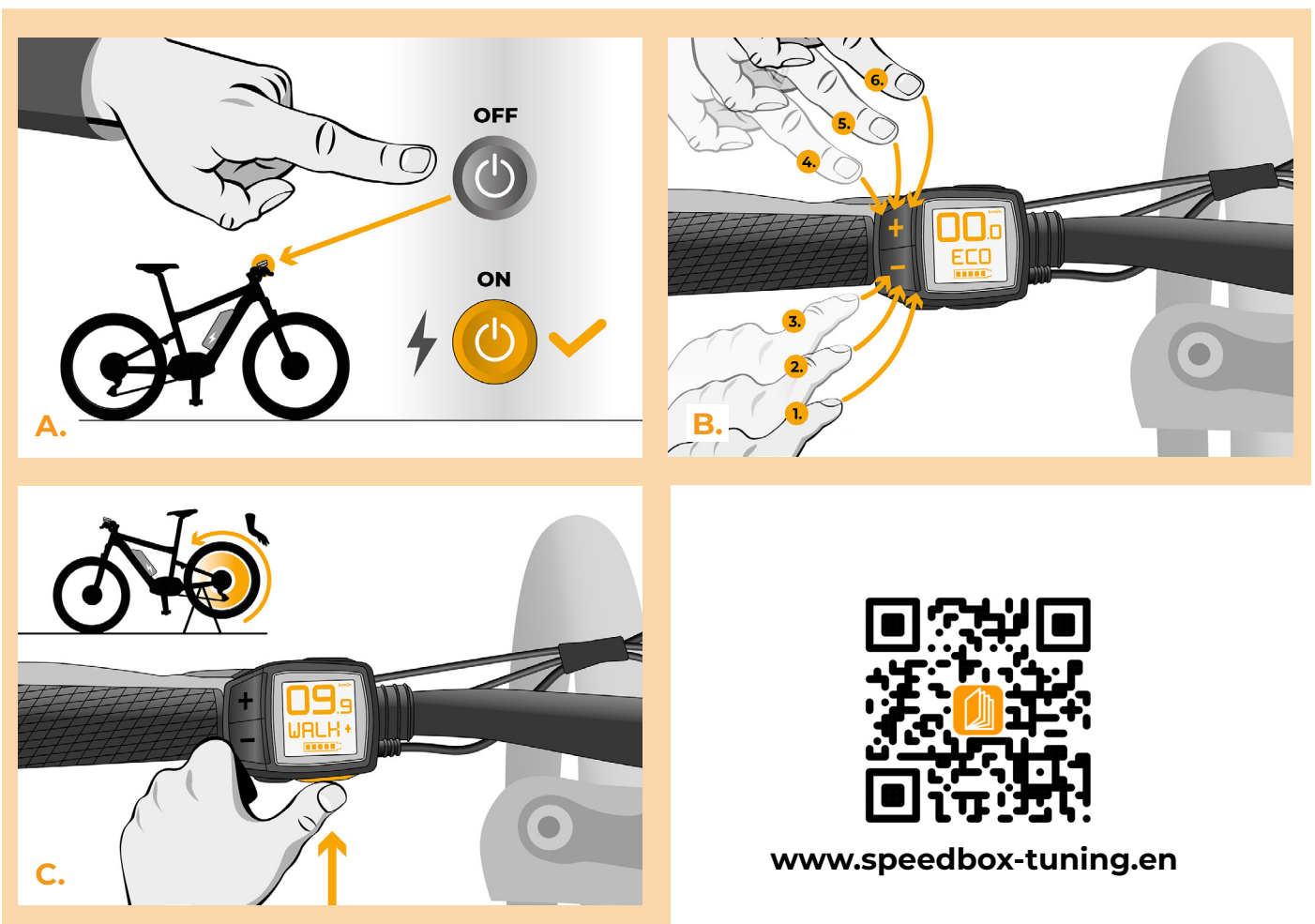
If you have removed the crank according to Step 2, install it back.

- A.** Using a 22 mm wrench, remove the crank puller from the crank arm.
- B.** Put the crank arm back to the central axis of the e-bike motor.
- C.** Screw the crank bolt into the crank arm and tighten it with the Hex Key H8.



STEP 9: Setting the speed limit

- A.** Turn the e-bike on.
- B.** Set TURBO mode. Switch between the assistance modes briefly in the following order TURBO -> SPORT -> TOUR -> ECO -> TOUR -> SPORT ->TURBO, i.e., go three levels down and three levels up. The current speed limit will be displayed.
- C.** Set the maximum speed limit by activating the WALK function briefly or by turning the rear wheel 360°. With each brief activation of the WALK function or turning of the wheel, the limit increases by 5 km/h. The last displayed limit is saved after five seconds of inactivity.



Ebike Electronic s.r.o.

Rybna 716/24 | 110 00 Praha 1 | Czech Republic | ID: 05553555 | VAT: CZ05553555

