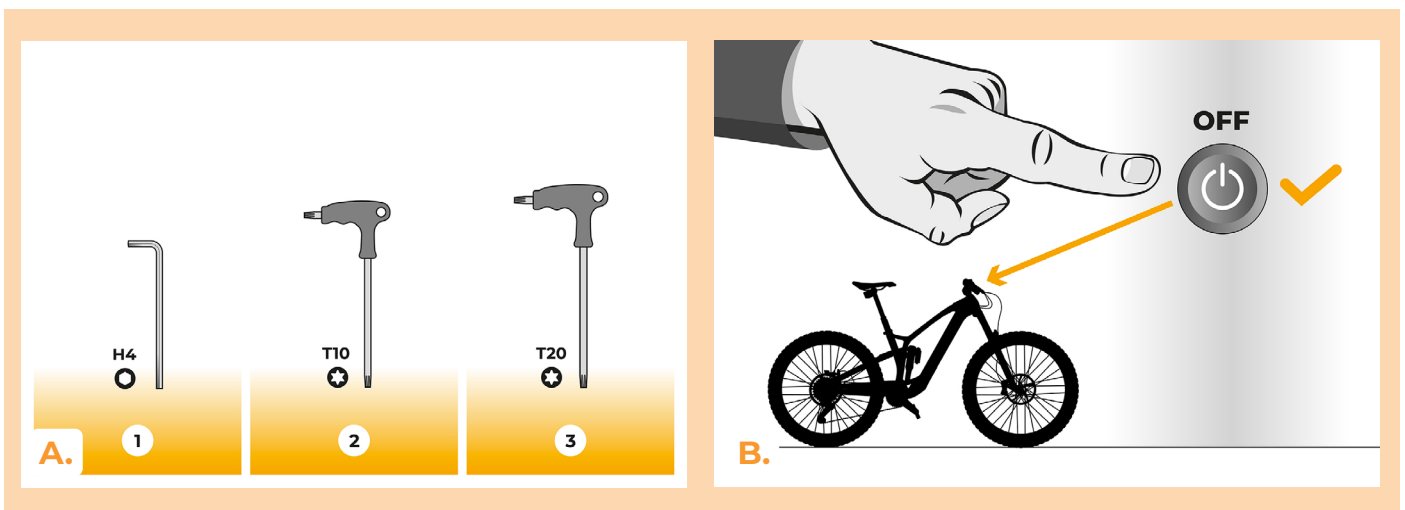


SpeedBox 3.1 for TQ

STEP 1: Preparation for installation

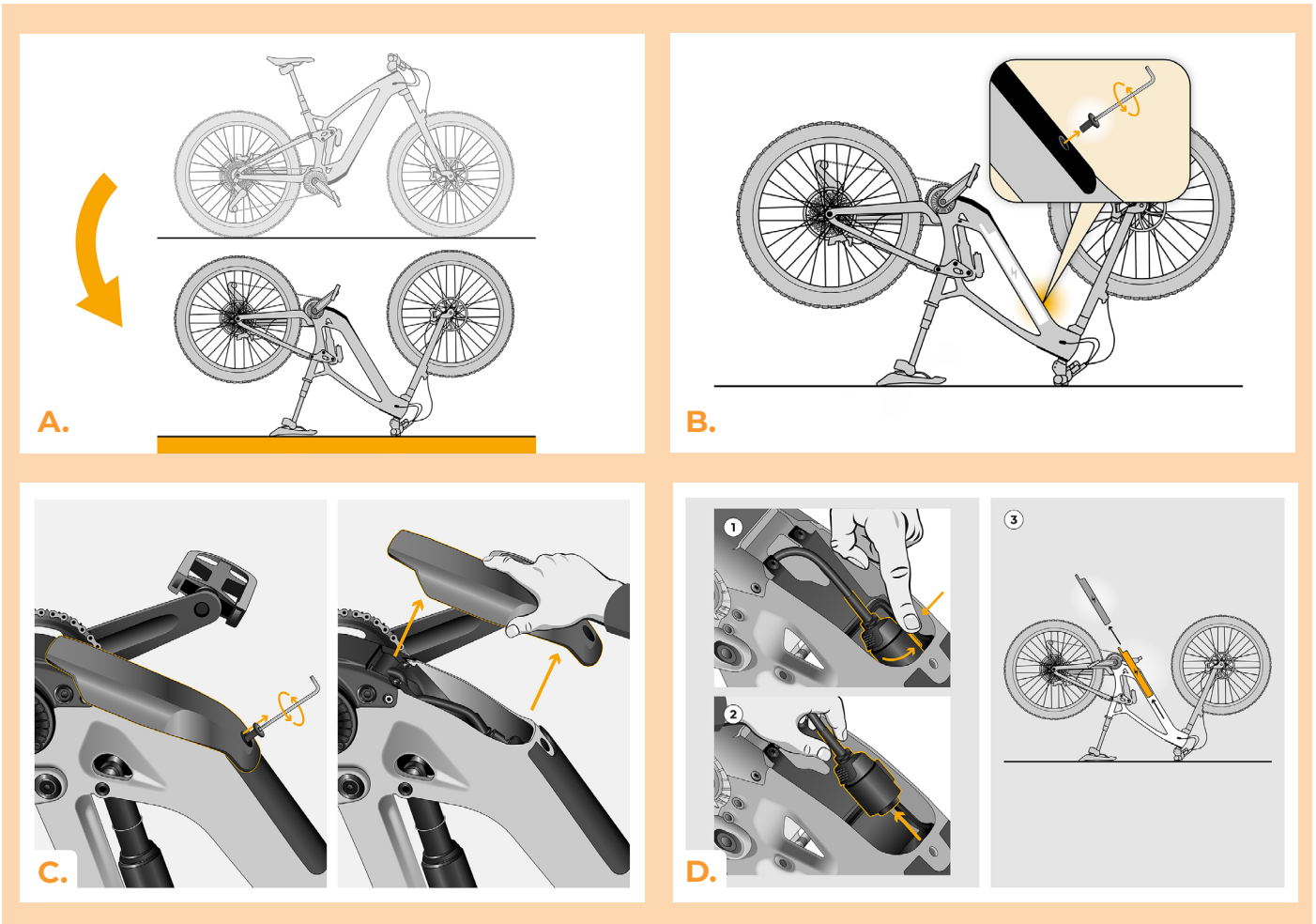
- A.** Prepare the following tools (tools may vary depending on the type of e-bike):
1. Hex key H4
 2. Torx screwdriver T10
 3. Torx screwdriver T20
- B.** Turn off the e-bike.

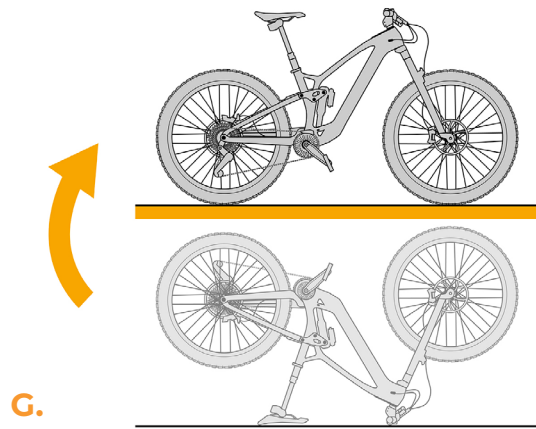
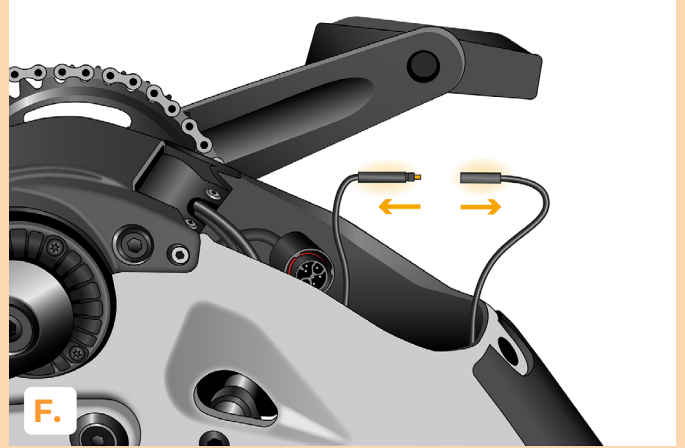
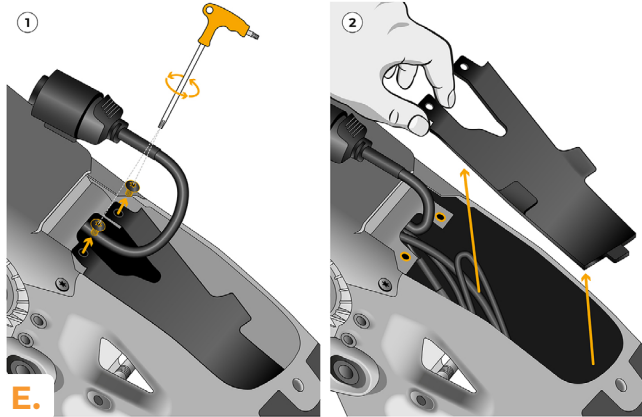


STEP 2: Disassembly of the e-bike frame

Motor cover disassembly may vary depending on the e-bike's design.

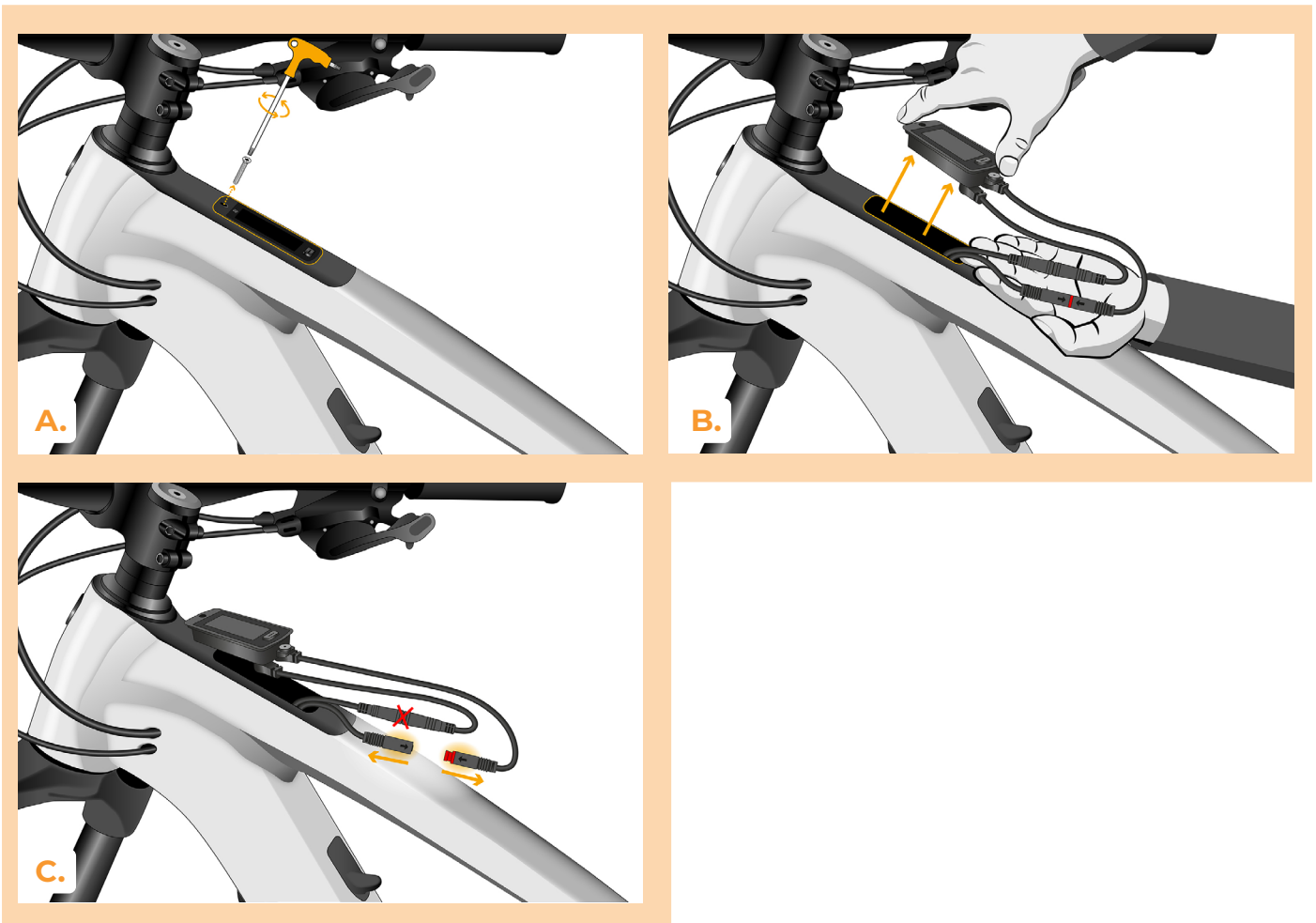
- A.** Turn the e-bike upside down so the motor faces upward.
- B.** Unscrew the battery safety bolt from the frame using the H4 Hex key.
- C.** Unscrew and remove the motor cover from the e-bike frame using the H4 Hex key.
- D.** Disconnect the battery from the power supply and then remove it from the e-bike frame.
- E.** Unscrew and remove the inner motor connector cover using the T20 Torx screwdriver.
Rozpojte konektor kabelu snímače otáček.
- F.** Disconnect the speed sensor cable connector.
- G.** Turn the e-bike back onto its tires.





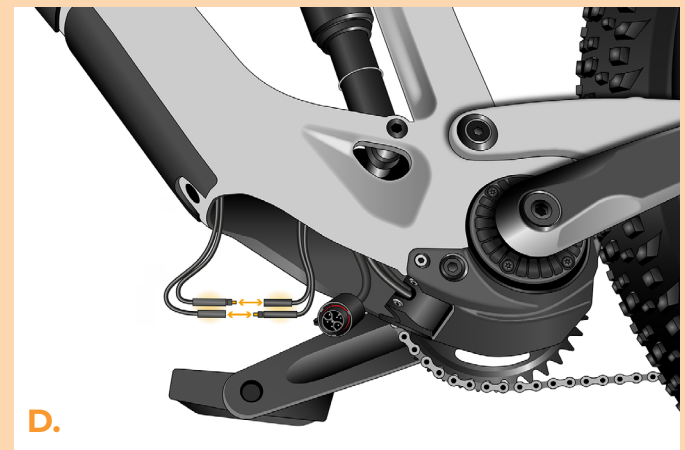
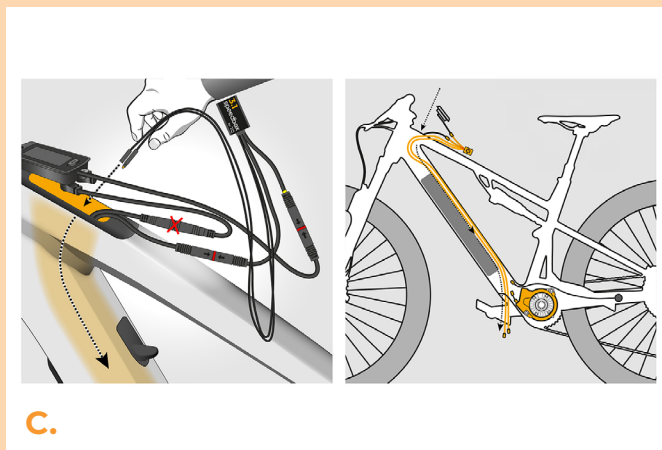
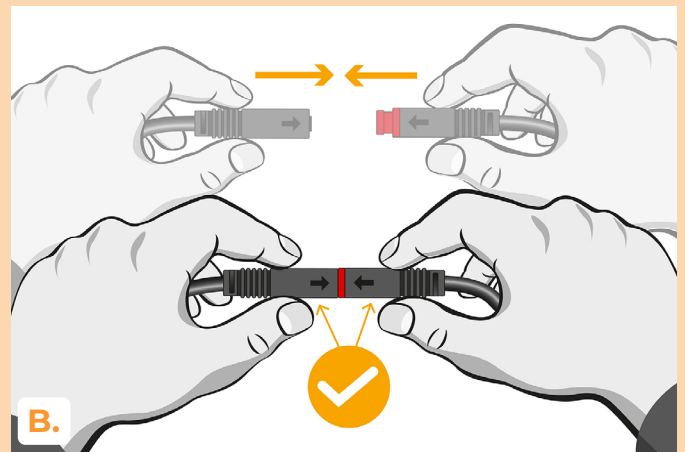
STEP 3: Disassembly of TQ Display

- A.** Unscrew the TQ display from the e-bike frame using the T10 Torx screwdriver.
- B.** Pull the TQ display out of the e-bike frame together with the connectors.
- C.** Disconnect the cable connector leading to the motor.



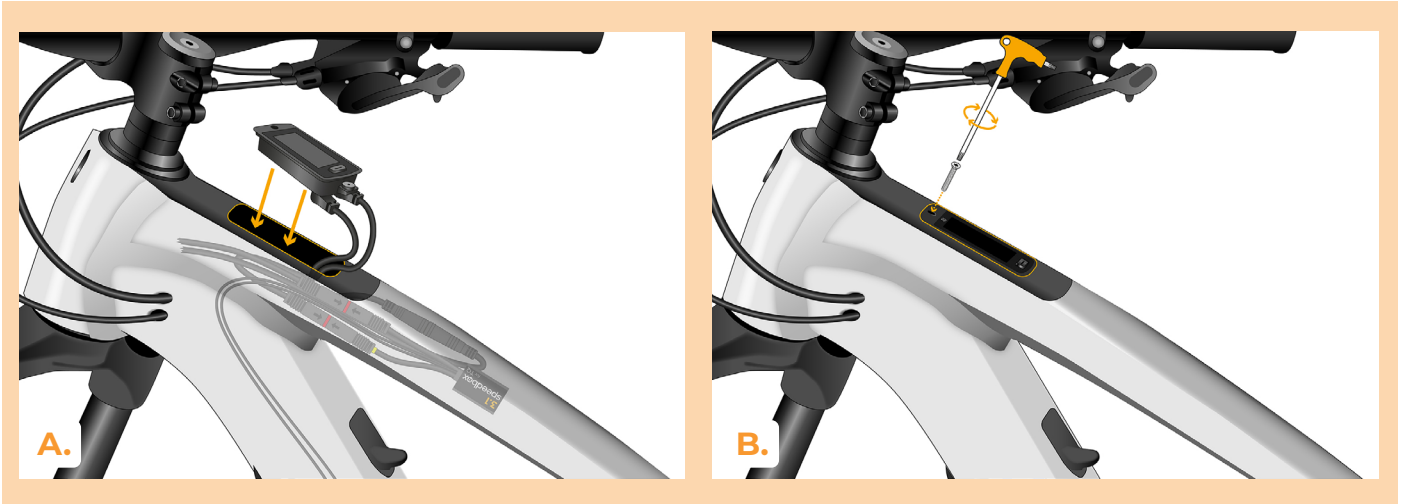
STEP 4: SpeedBox tuning installation

- A.** Connect the SpeedBox Tuning device to the disconnected connectors between the TQ display and the motor cable (step 3).
- B.** Make sure the connector locks fit properly into each other.
- C.** Now route the two long cables through the e-bike frame via the TQ display opening down to the motor.
- D.** Connect the cables to the disconnected speed sensor connectors.



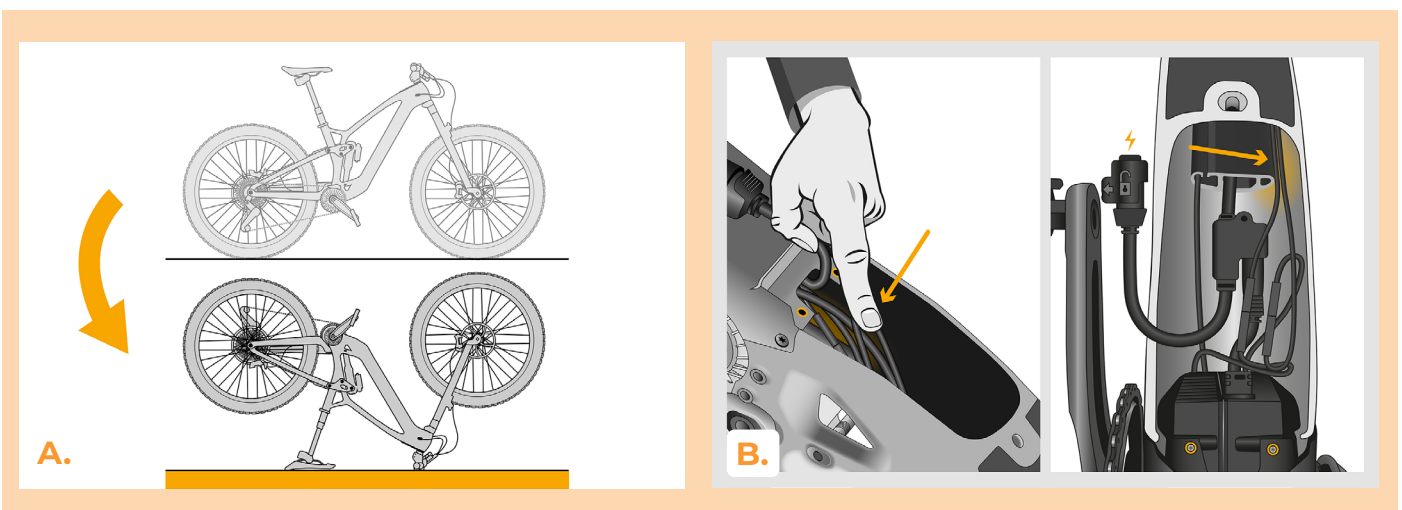
STEP 5: Installation of TQ Display

- A.** Insert the TQ display back into the e-bike frame together with the SpeedBox device
- B.** Pomocí torx šroubováku T10 jej opět přišroubujte do rámu elektrokola.

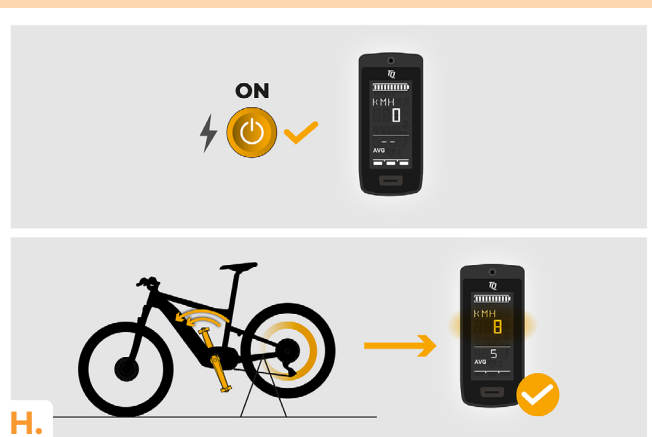
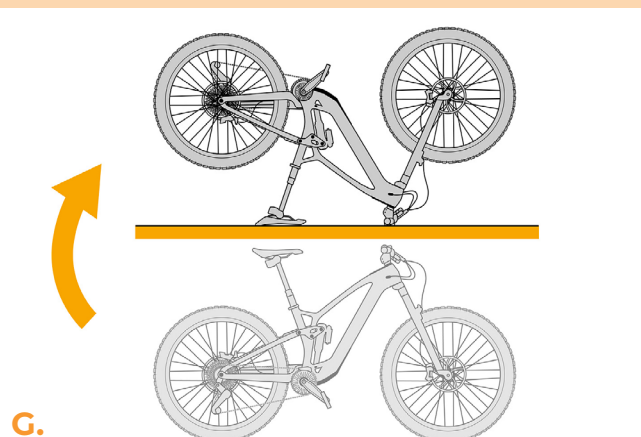
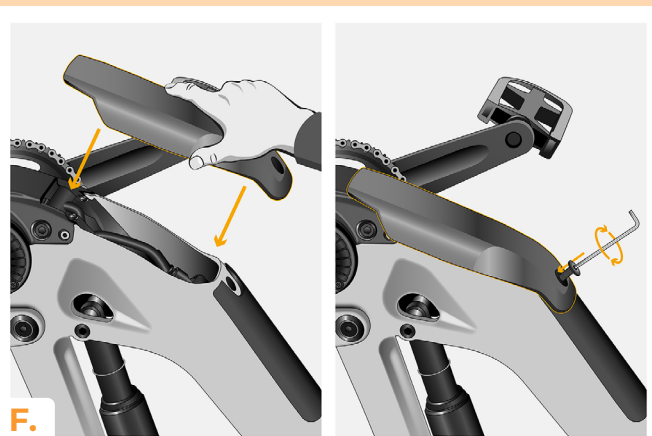
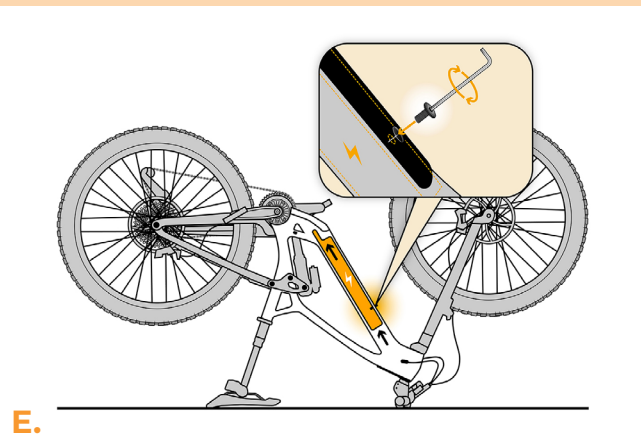
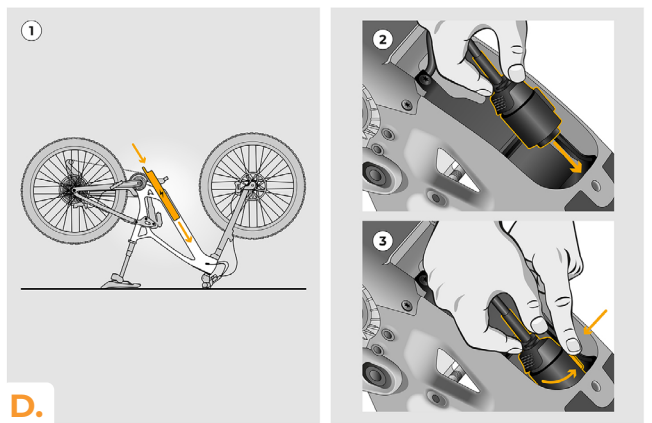
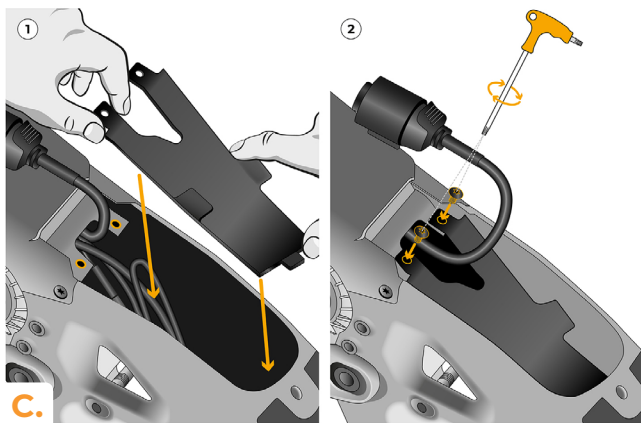


STEP 6: Reinstallation of the motor and battery cover on the e-bike

- A.** Turn the bike upside down.
- B.** Place the cables back into the motor compartment. Make sure the speed sensor cables do not obstruct the insertion of the battery.

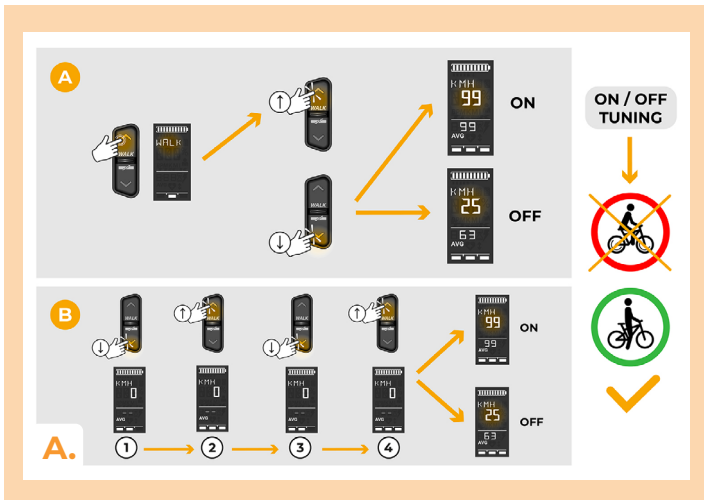


- C.** Reinstall the motor connector cover and screw it in using the T20 Torx screwdriver.
- D.** Insert the battery into the bike frame and connect the power connector.
- E.** Slightly pull out the battery so that the threaded holes overlap and it can be secured with a screw.
- F.** Now reinstall the motor cover on the e-bike frame and screw it in using the H4 Hex key.
- G.** Turn the e-bike back onto its tires.
- H.** Check the functionality of the SpeedBox Tuning device.



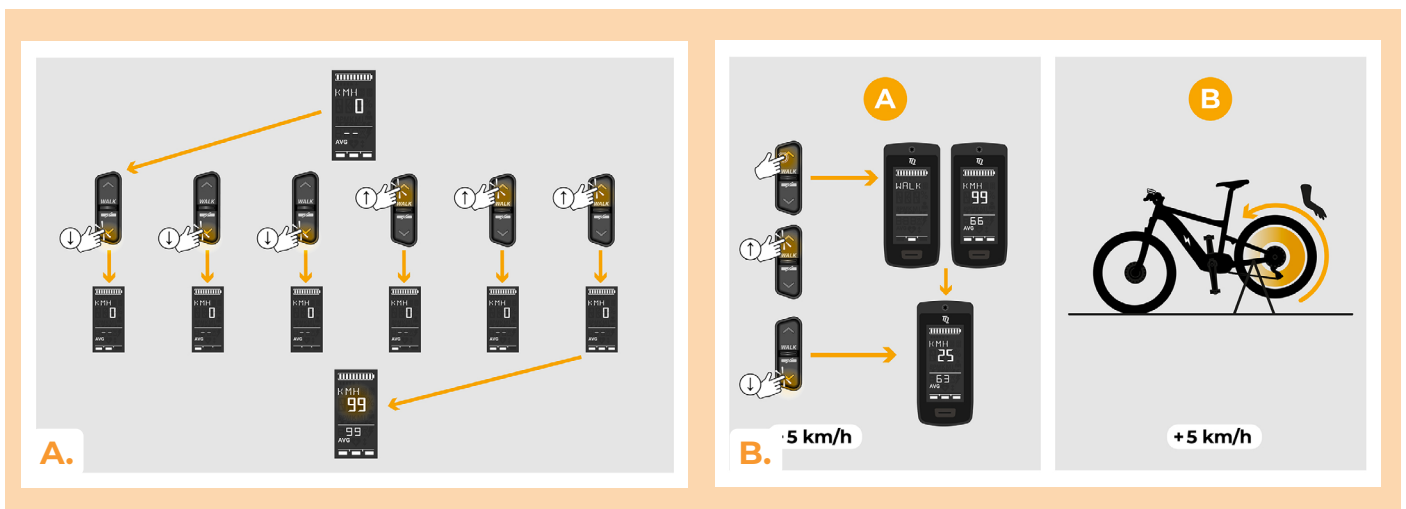
STEP 7: Tuning function check

- A.** Activation and deactivation of the SpeedBox device is done by briefly activating the WALK function and changing the modes: + - + - (↑↓↑↓). Note: Always activate/deactivate the tuning before riding, not during the ride.



STEP 8: Setting the speed limit

- A.** Set the maximum pedal-assist speed by changing the modes: High – Mid – Eco – Off – Eco – Mid – High (↓↑↓↑↑↑). The current speed limit will then be displayed on the screen.
- B.** Set the maximum pedal-assist speed by briefly activating the WALK function or by turning the rear wheel 360°. The last displayed limit will be saved after five seconds of inactivity.





www.speedbox-tuning.com

Ebike Electronic s.r.o.

Rybna 716/24 | 110 00 Praha 1 | Czech Republic | ID: 05553555 | VAT: CZ05553555

