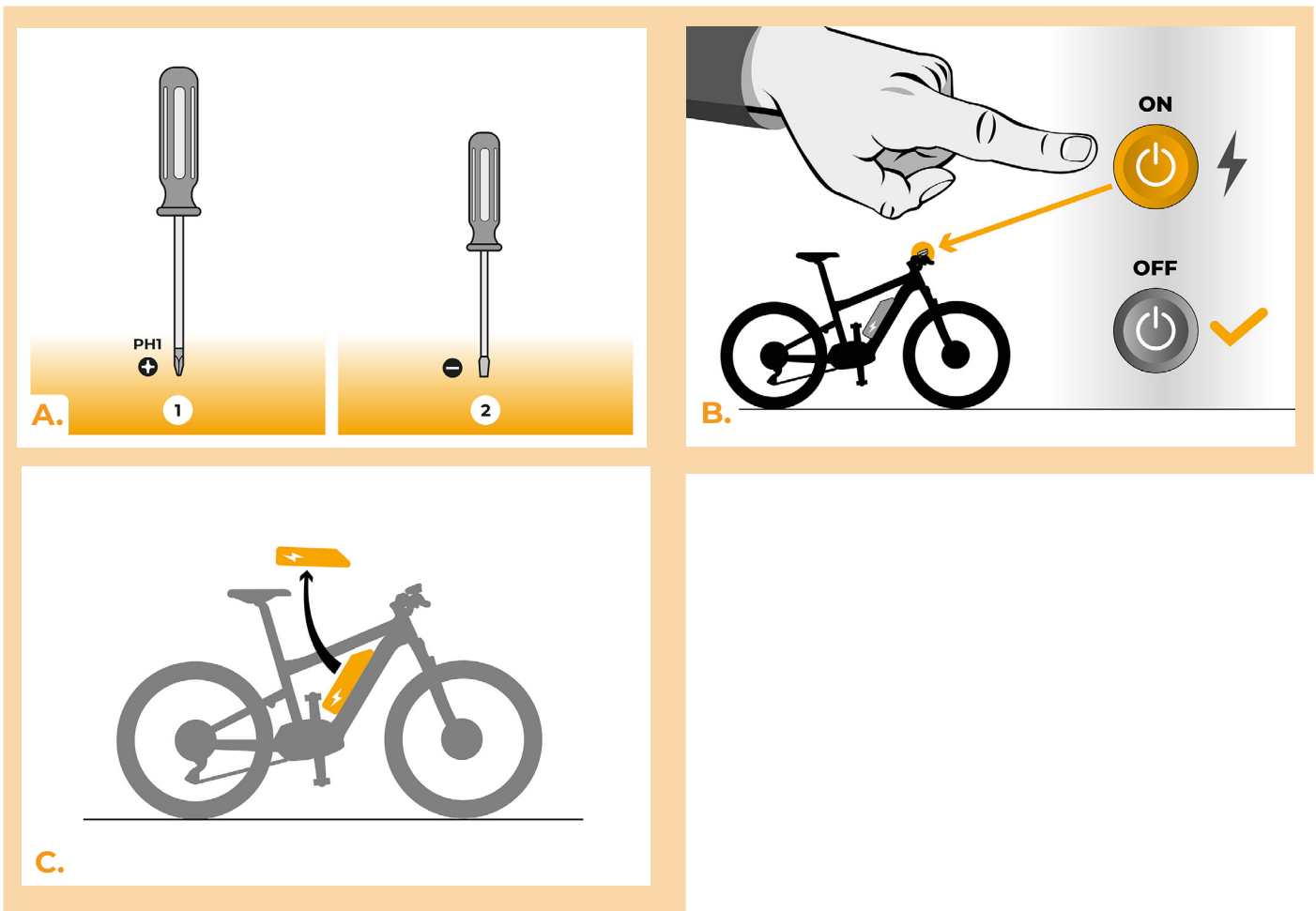


SpeedBox 3.1 for Bafang

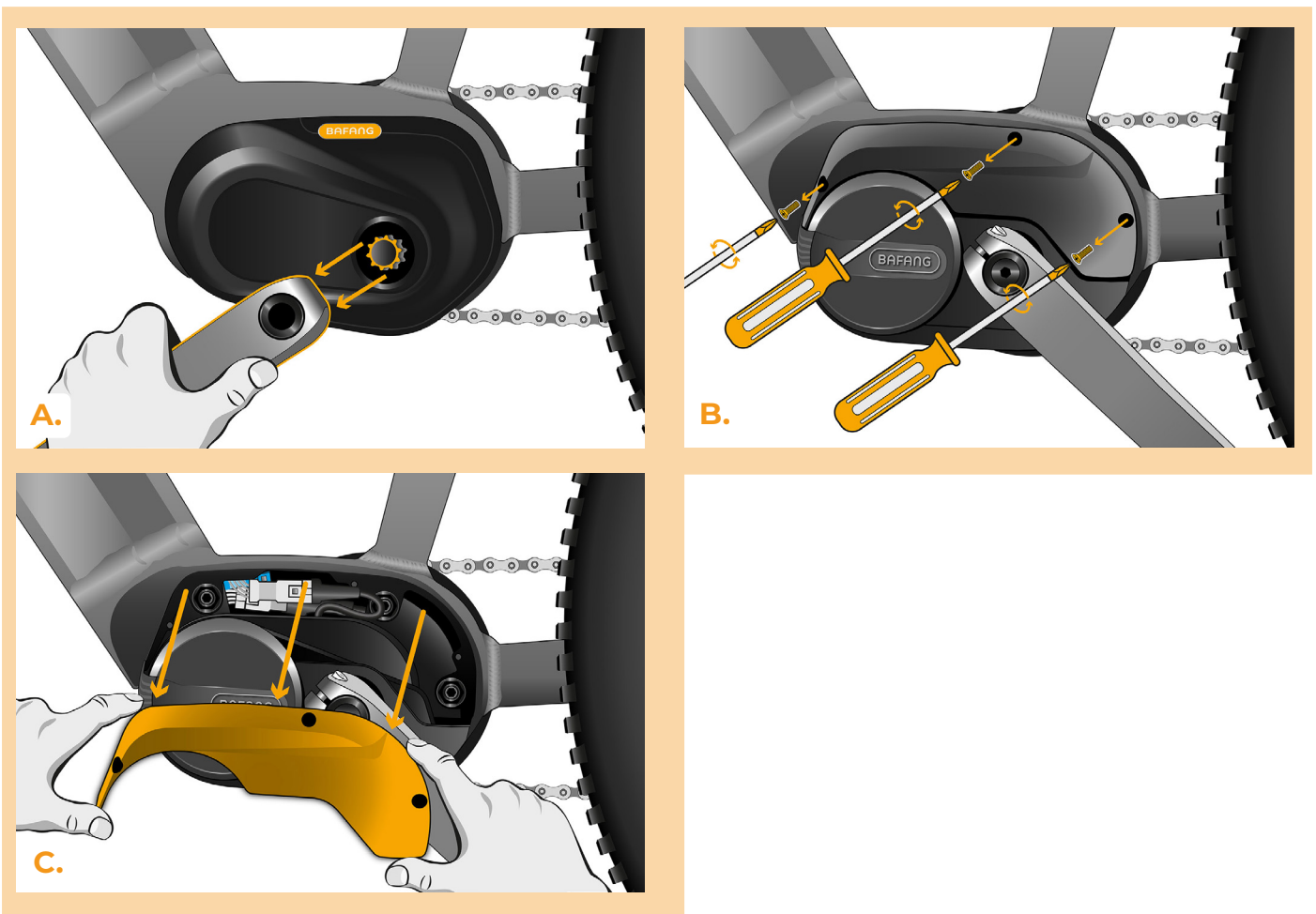
STEP 1: Preparation for installaion

- A.** Prepare the following tools:
 1. Phillips screwdriver PH1
 2. Precision slotted screwdriver
- B.** Turn off the e-bike.
- C.** Remove the battery from the e-bike according to the manufacturer's manual.



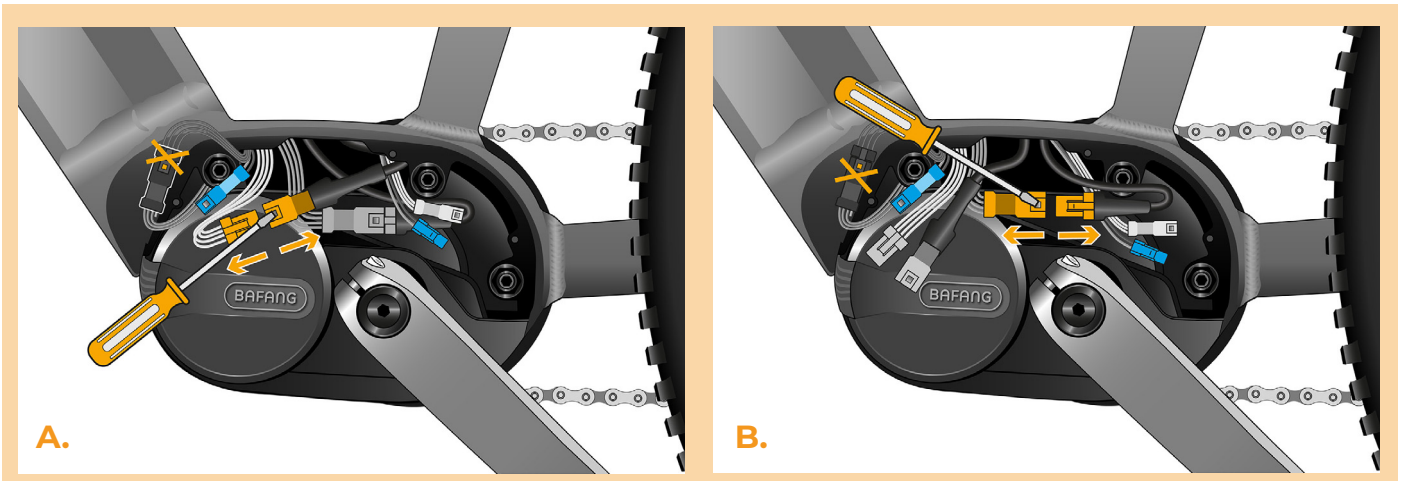
STEP 2: Motor cover removal

- A.** If the crank interferes with the removal of the plastic motor cover, it must be dismantled according to the manufacturer's manual.
- B.** Unscrew the three screws holding the upper motor cover with the Phillips screwdriver PH1.
- C.** Remove the motor cover.



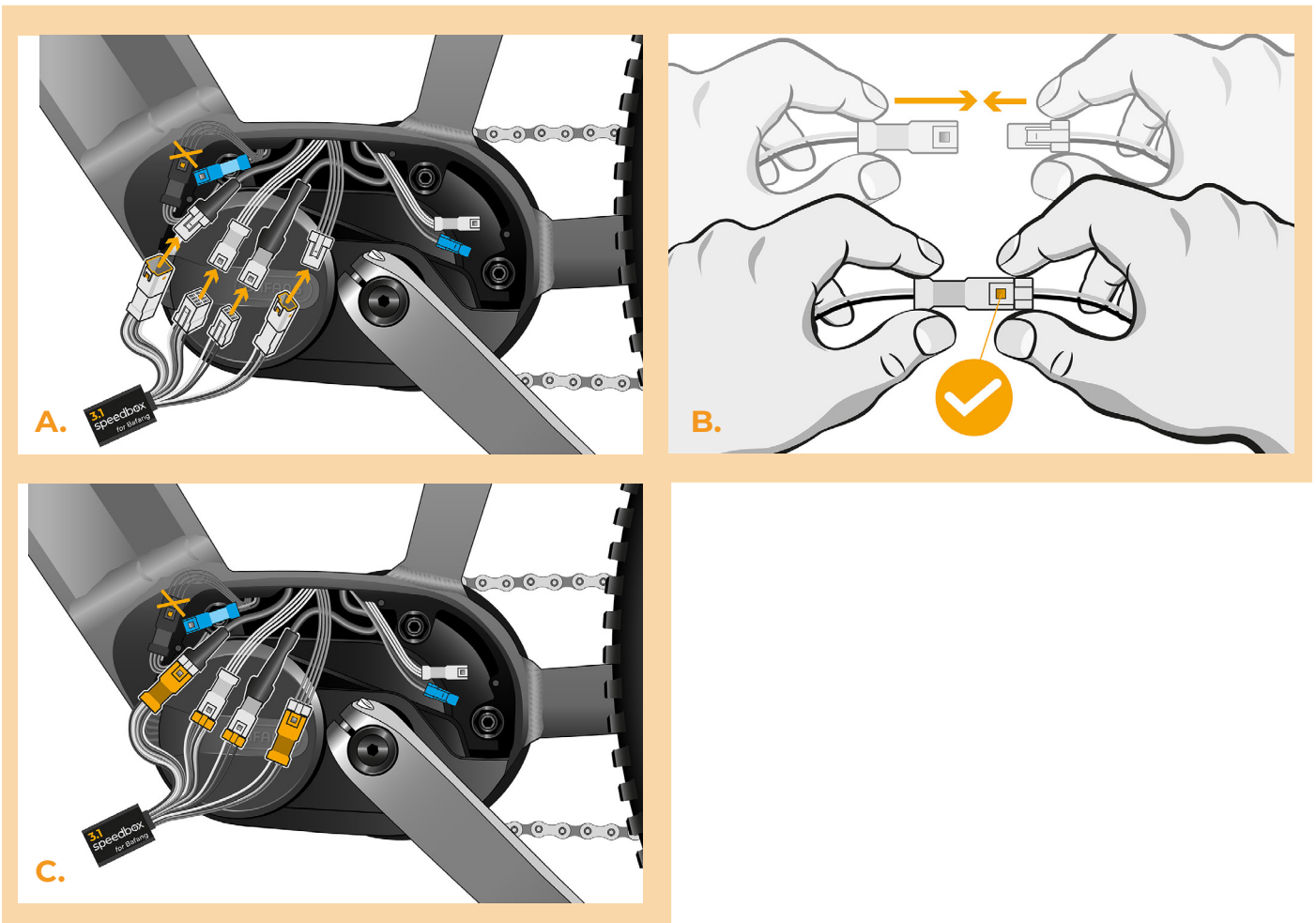
STEP 3: Disconnecting the connectors from the motor

- A. Using the precision slotted screwdriver, disconnect the speed sensor connector.
- B. Disconnect the display connector in the same manner.



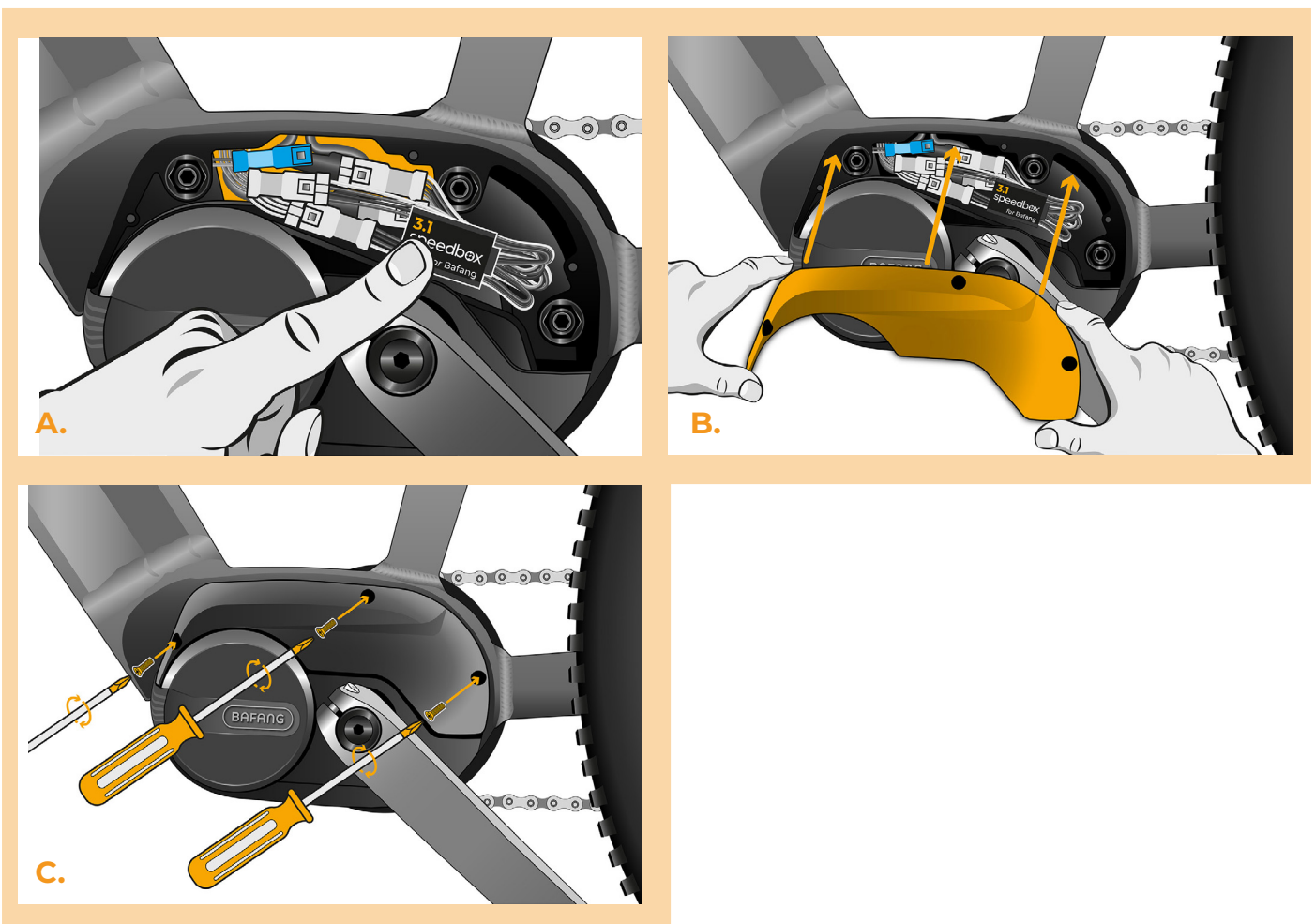
STEP 4: SpeedBox tuning installation

- A.** Plug SpeedBox into the disconnected connectors (step 3).
- B.** Make sure that the locks on the connectors are seated properly.
- C.** Before assembling the motor, check the correct wiring as shown in the figure.



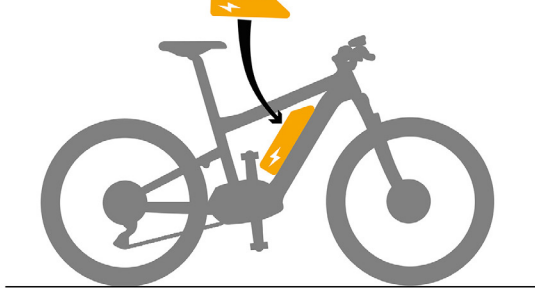
STEP 5: Motor cover assembly

- A.** Fit the SpeedBox and all connectors and wires leading from the motor into the free space in the motor compartment.
- B.** Put the motor cover back in its original position.
- C.** Using the Phillips screwdriver PH1, attach the motor cover with screws. If the crank was removed in step 2, install it back.

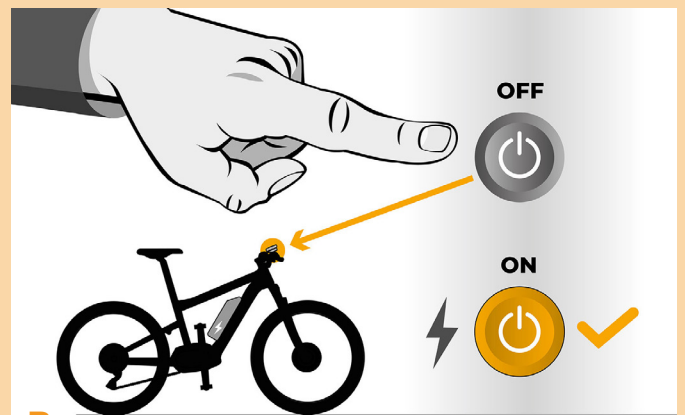


STEP 6: Tuning function check

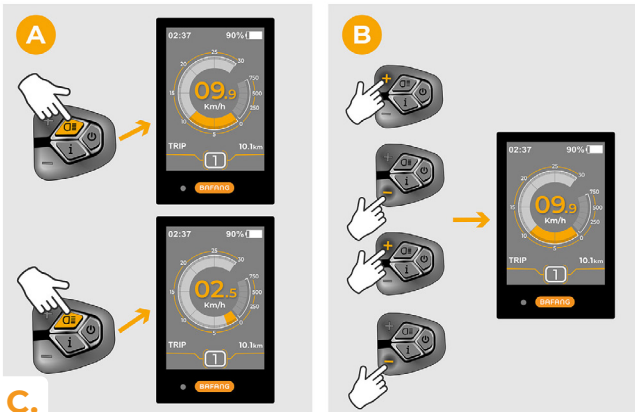
- A. Place the battery back into the e-bike.
- B. Turn the e-bike on.
- C. Activate/deactivate SpeedBox by pressing the LIGHT button or by switching between two assistance modes twice (+--). The value of 9.9 or 2.5 will be shown indicating the maximum speed limit in km/h.
- D. Spin the rear wheel and make sure the rear wheel speed is shown on the e-bike display.



A.



B.



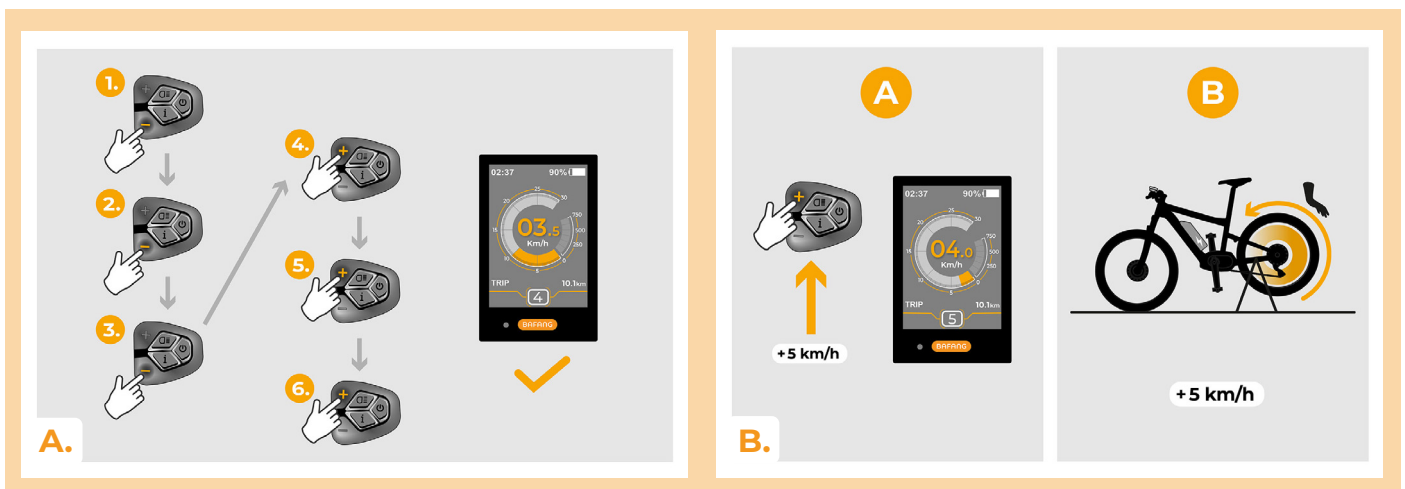
C.



D.

STEP 7: Setting the speed limit

- A.** To set the maximum speed limit, switch the modes: - - - + + +. The current speed limit will be displayed.
- B.** Set the maximum speed limit by pressing the + button briefly or by turning the rear wheel 360°. With each press on the + button or turning of the wheel, the limit increases by 5 km/h. The last displayed limit is saved after five seconds of inactivity.



www.speedbox-tuning.en

Ebike Electronic s.r.o.

Rybna 716/24 | 110 00 Praha 1 | Czech Republic | ID: 05553555 | VAT: CZ05553555



