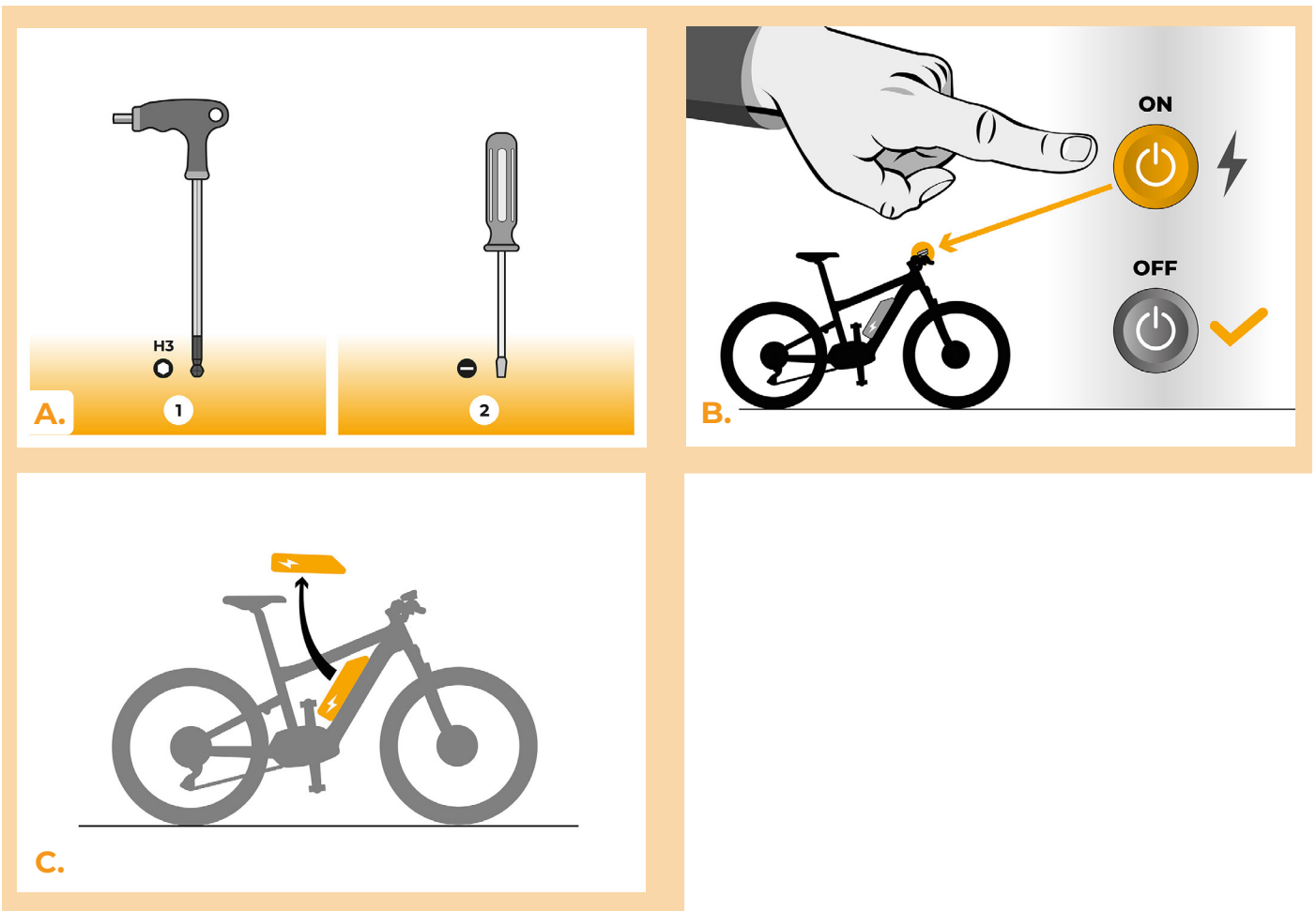


SpeedBox 1.0 for Panasonic

STEP 1: Preparation for installation

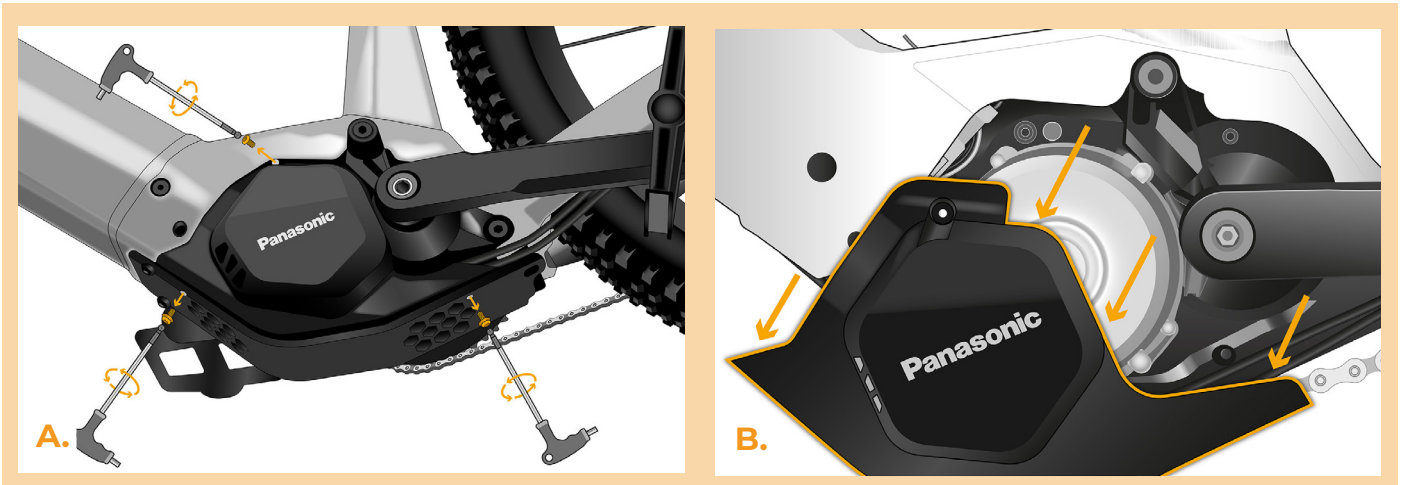
(tools may vary depending on the type of e-bike)

- A.** Prepare the following tools:
 1. Hex Key H3
 2. Precision slotted screwdriver
- B.** Turn off the e-bike.
- C.** Remove the battery from the e-bike according to the manufacturer's manual.



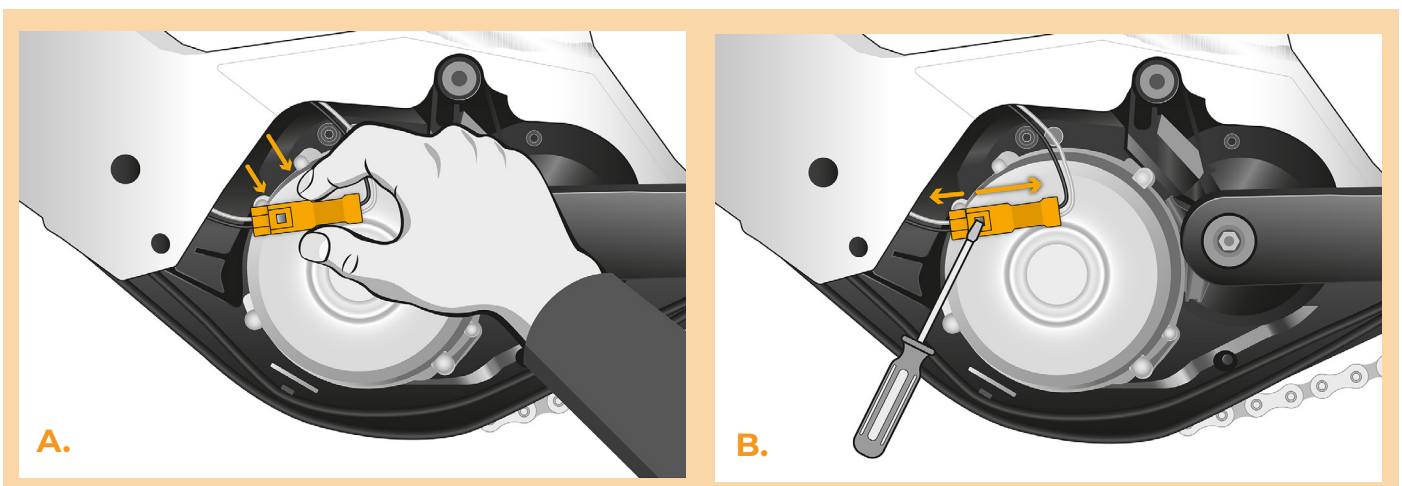
STEP 2: Cover removal

- A. Unscrew the screws holding the motor cover with the Hex Key H3.
- B. Remove the motor cover.



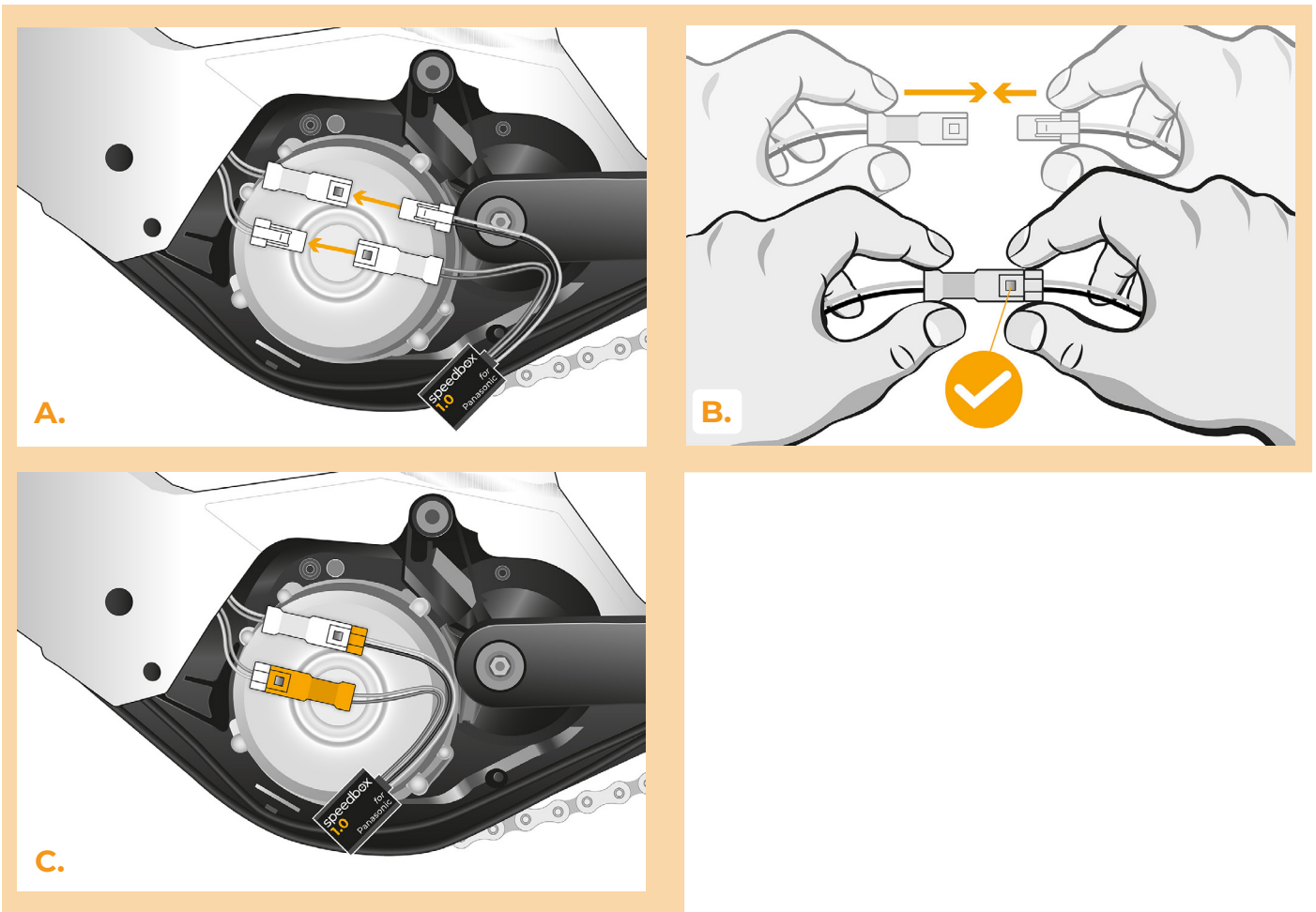
STEP 3: Disconnecting the connectors from the motor

- A. Carefully take out the connectors from the e-bike frame.
- B. Disconnect the speed sensor connector with the slotted screwdriver.



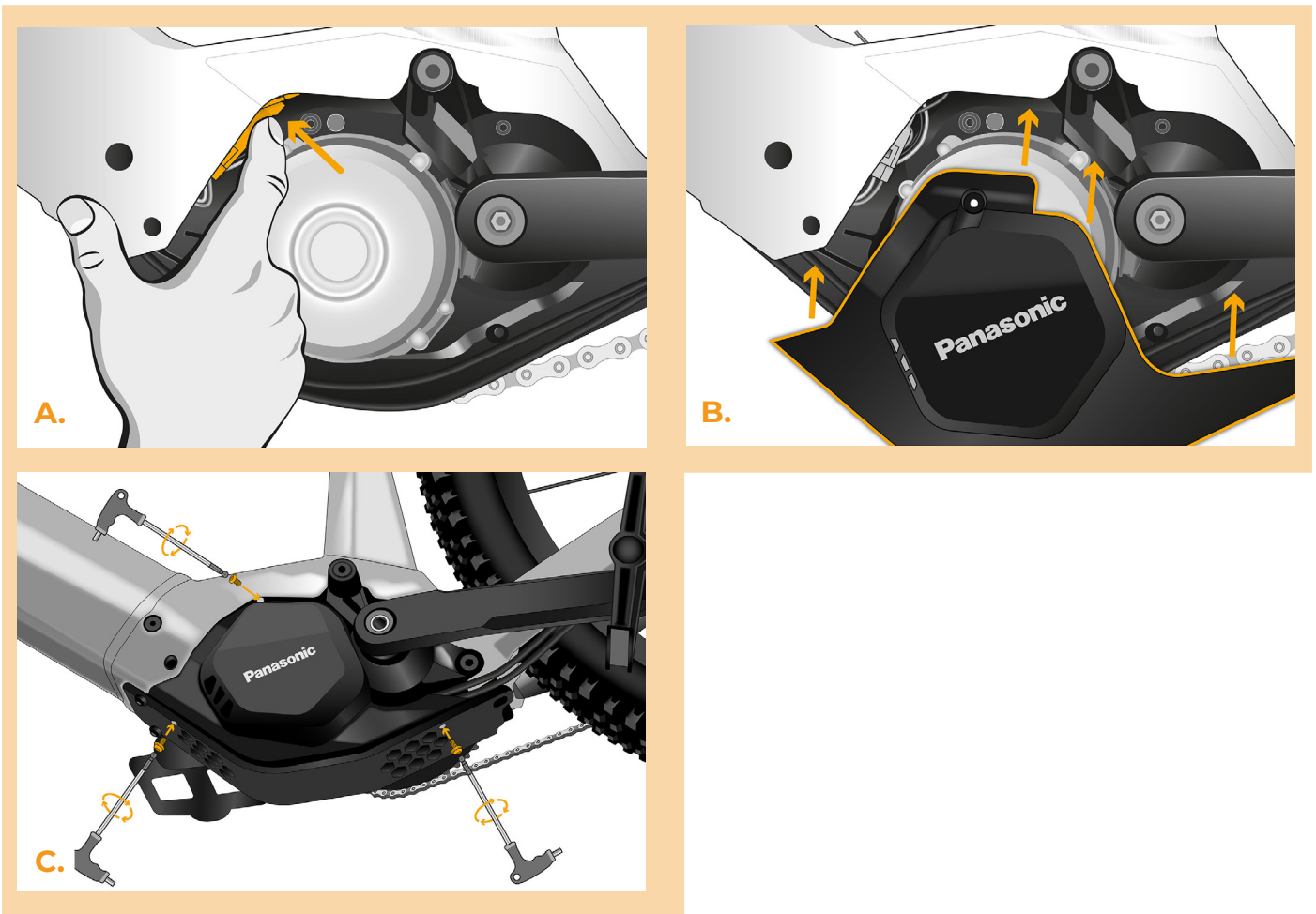
STEP 4: SpeedBox tuning installation

- A.** Plug SpeedBox into the disconnected connectors (step 3).
- B.** Plug the e-bike connectors, disconnected from the motor, into the SpeedBox connectors.
- C.** Before assembling the motor, check the correct wiring as shown in the figure.



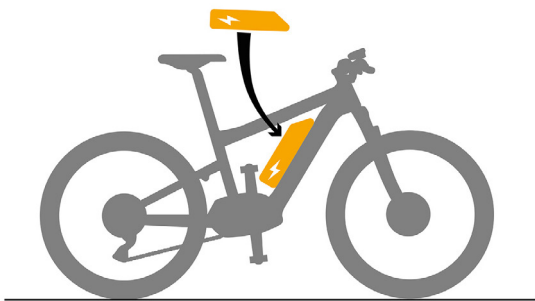
STEP 5: Motor cover assembly

- A.** Place the SpeedBox and the wiring leading from the motor back into the free space in the e-bike frame.
- B.** Place the motor cover back to its original position.
- C.** Attach the motor cover with screws using the hex key H3.

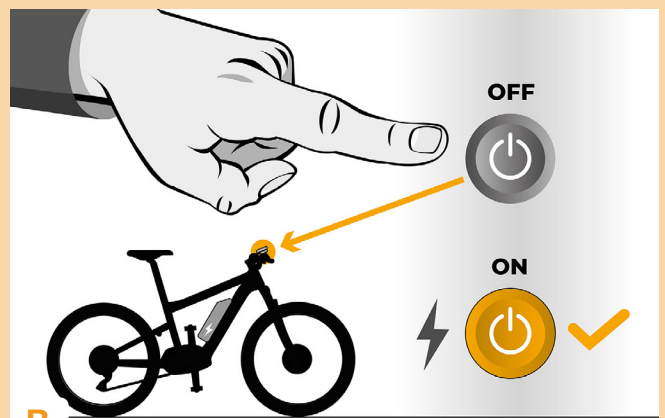


STEP 6: Tuning function check

- A.** Place the battery back into the e-bike.
- B.** Turn the e-bike on.
- C.** Spin the rear wheel and make sure the rear wheel speed is shown on the e-bike display.
- D.** SpeedBox is still active after switching on the e-bike. The speed limit is increased up to 50 km/h and the actual speed, travelled distance as well as other aspects of your ride are displayed in half values.



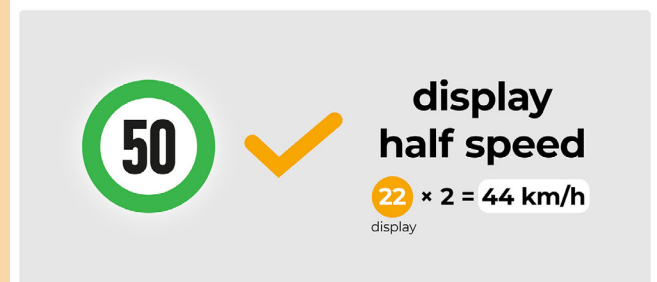
A.



B.



C.



D.



www.speedbox-tuning.com

Ebike Electronic s.r.o.

Rybna 716/24 | 110 00 Praha 1 | Czech Republic | ID: 05553555 | VAT: CZ05553555

