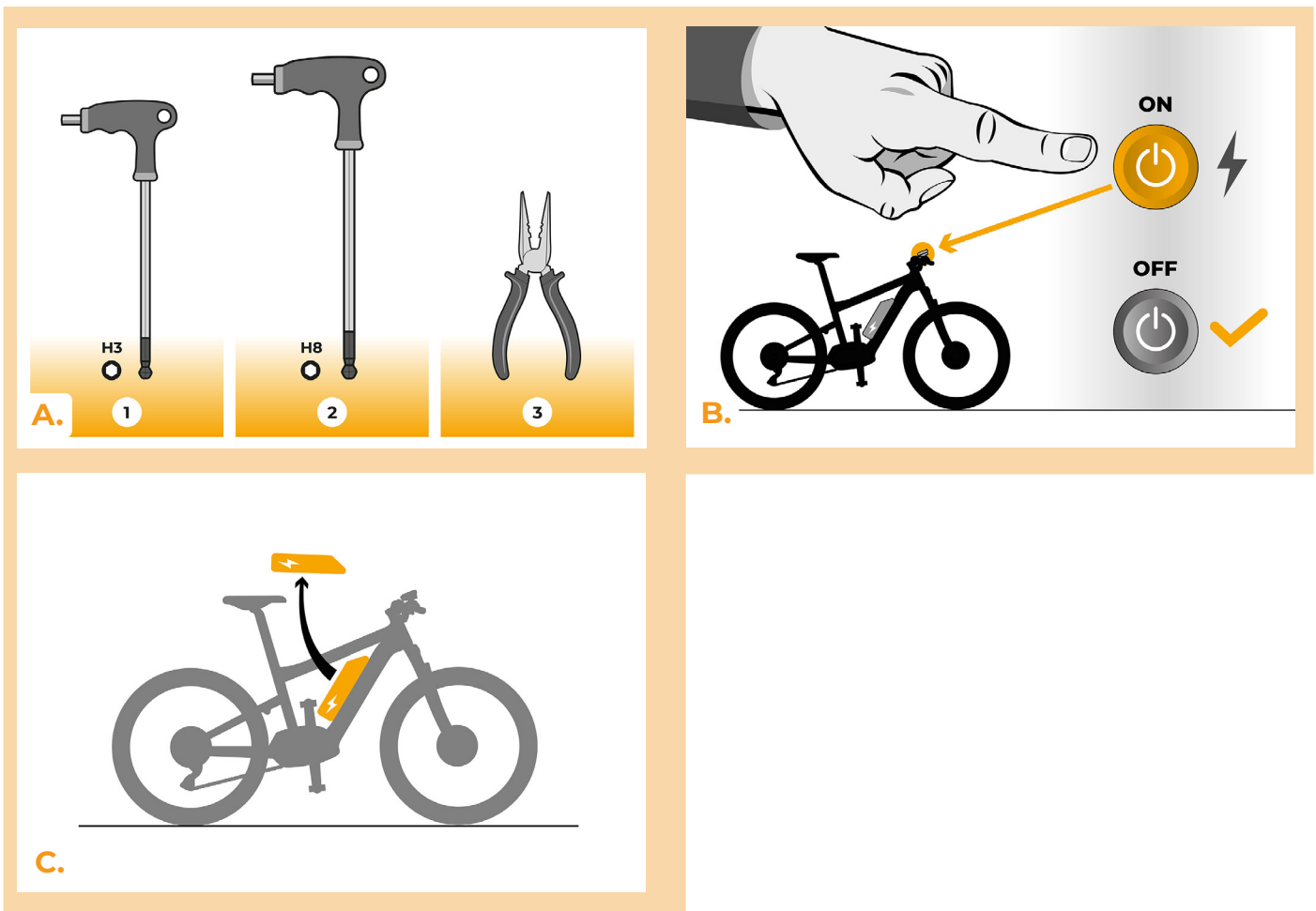


SpeedBox 3.0 B.Tuning for Brose

STEP 1: Preparation for installation

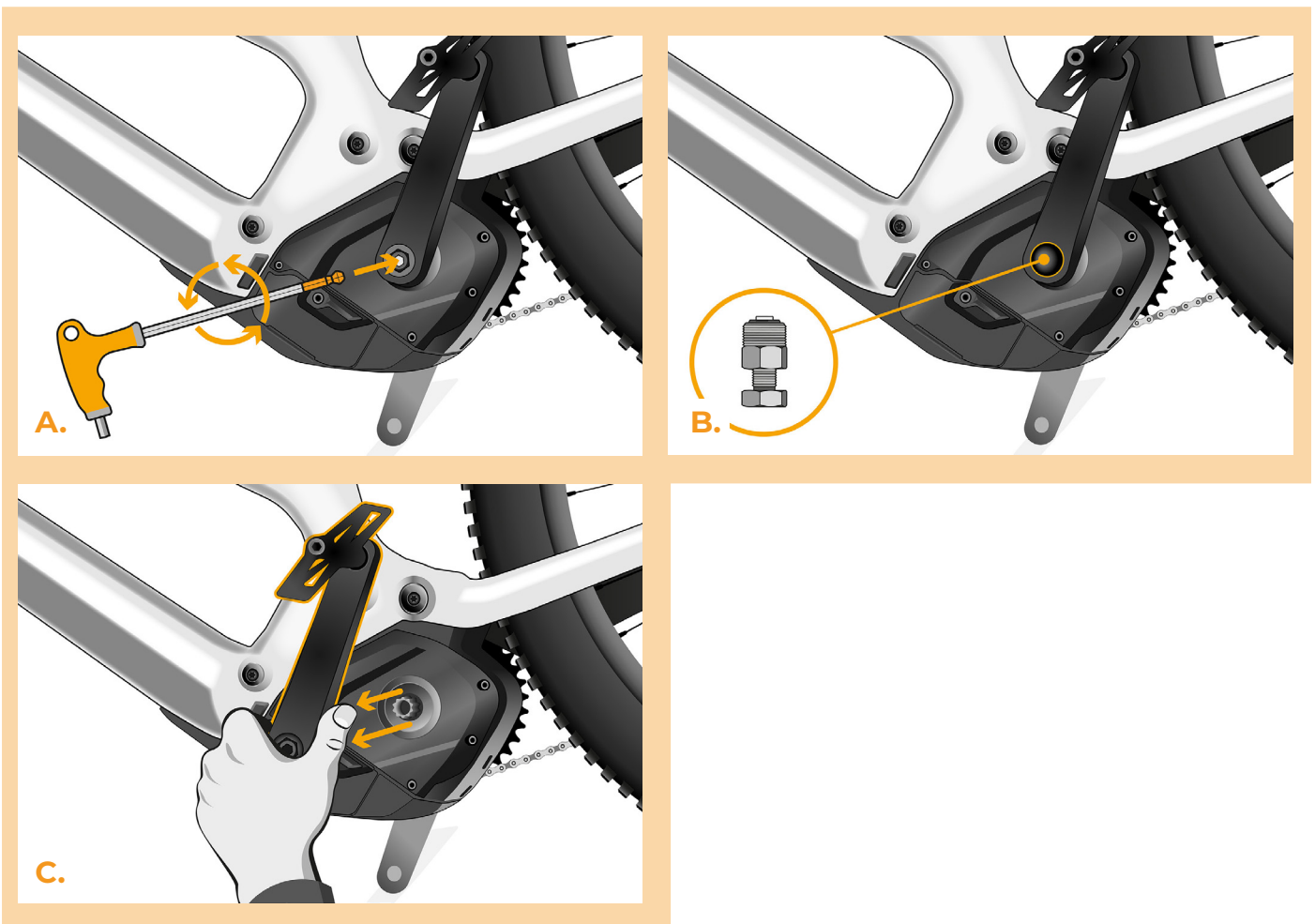
- A.** Prepare the following tools:
1. Hex Key H3
 2. Hex Key H8
 3. Needle nose pliers
- B.** Turn off the e-bike.
- C.** Remove the battery from the e-bike according to the manufacturer's manual.



STEP 2: Crank removal

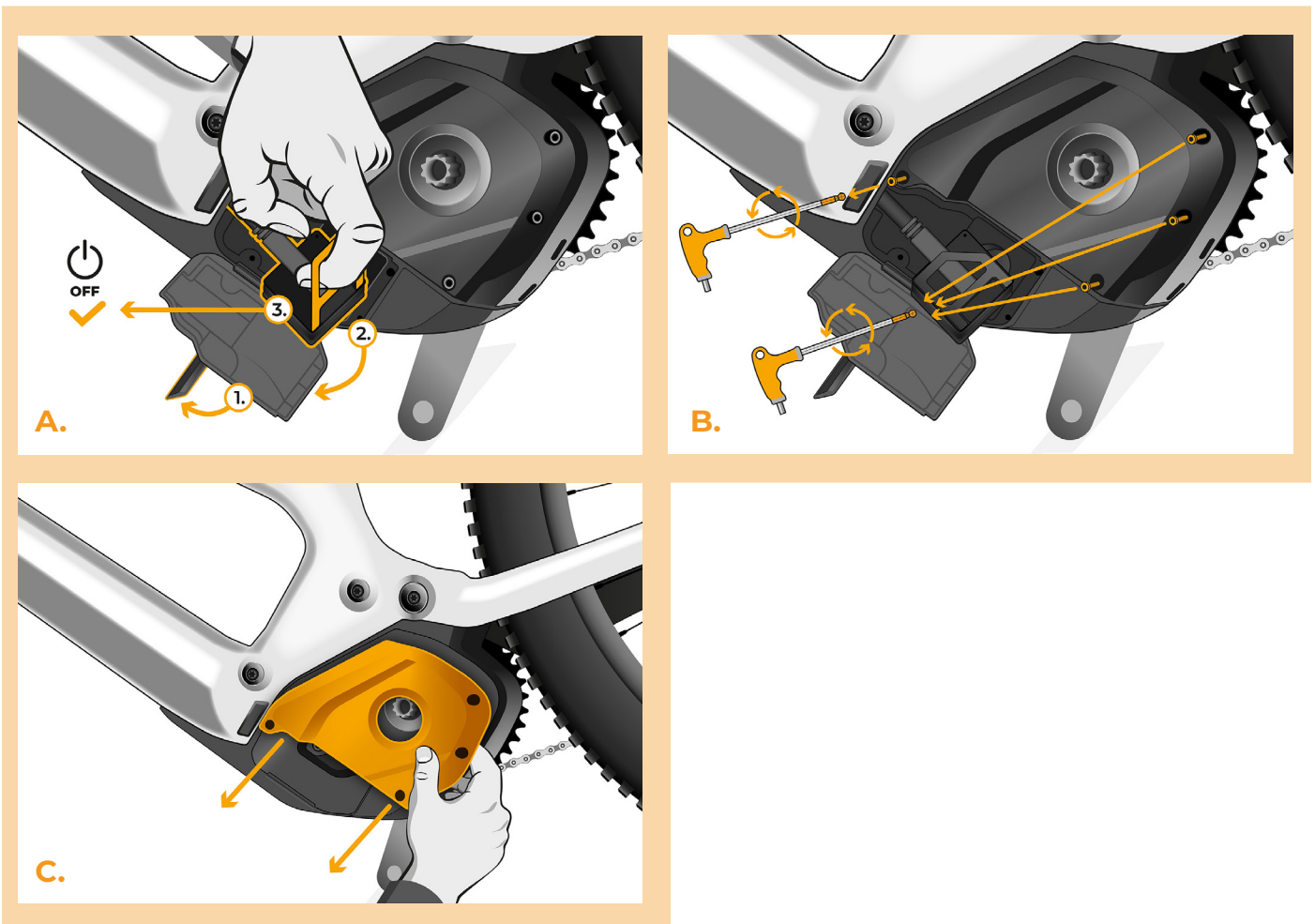
If the crank interferes with the removal of the plastic motor cover, it must be dismantled.

- A.** Remove the crank bolt of the left crank arm using the hex key H8.
- B.** In case the crank bolt is not self-extracting, it is necessary to use a crank puller, please see the User Manual on the website.
- C.** Remove the crank arm from the central axis of the motor.



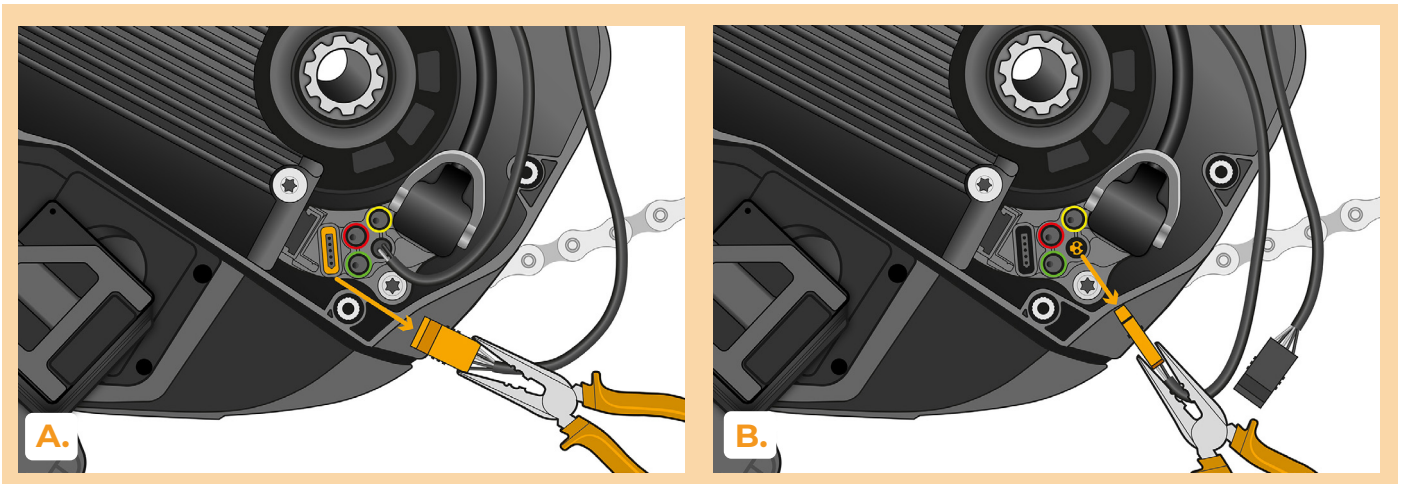
STEP 3: Motor cover removal

- A. Disconnect the battery charger connector.
- B. Unscrew the five screws holding the motor cover with the hex key H3.
- C. Remove the motor cover.



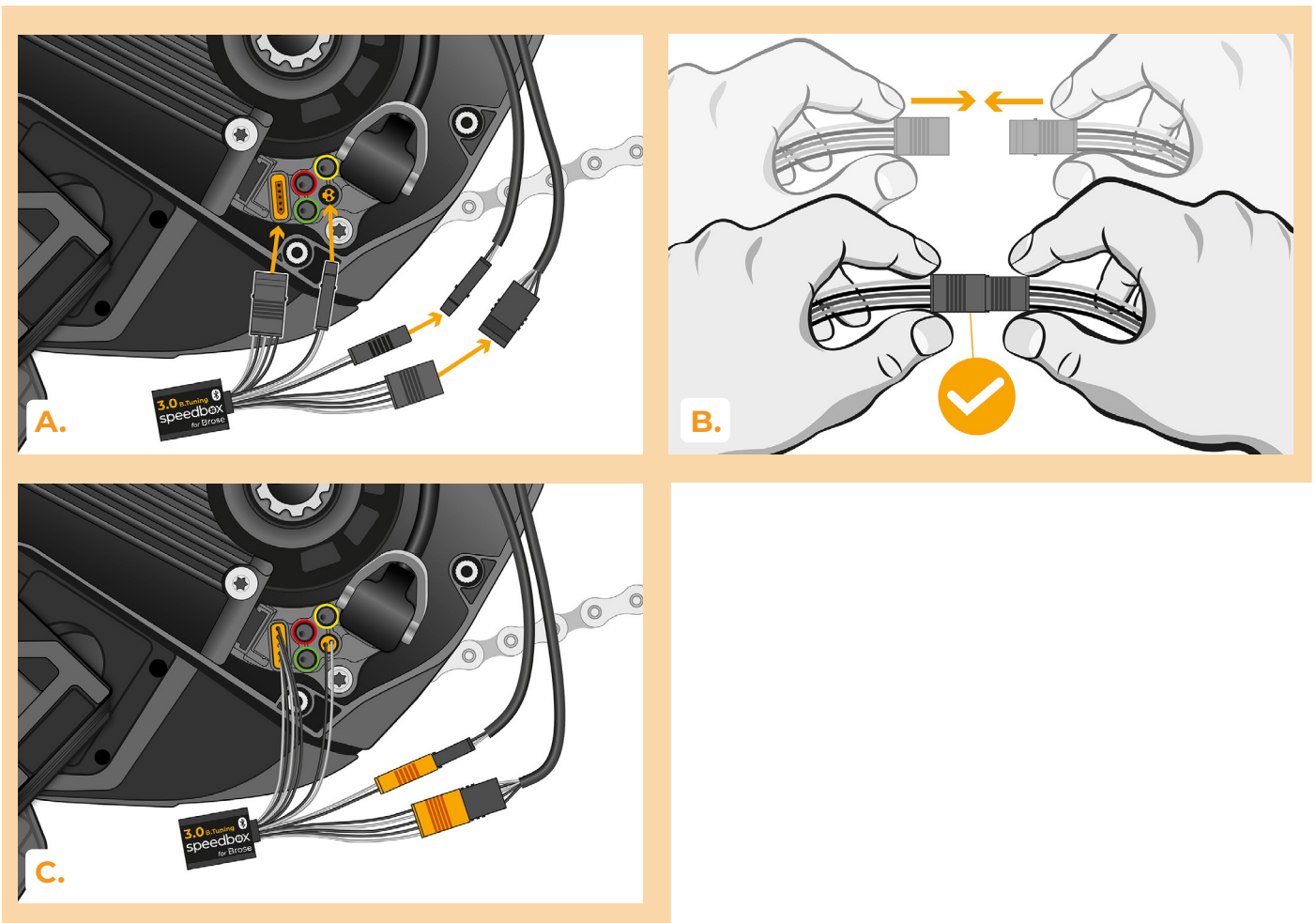
STEP 4: Disconnecting the connectors from the motor

- A. Using pliers, disconnect the display connector from the motor.
- B. Disconnect the speed sensor connector in the same manner.



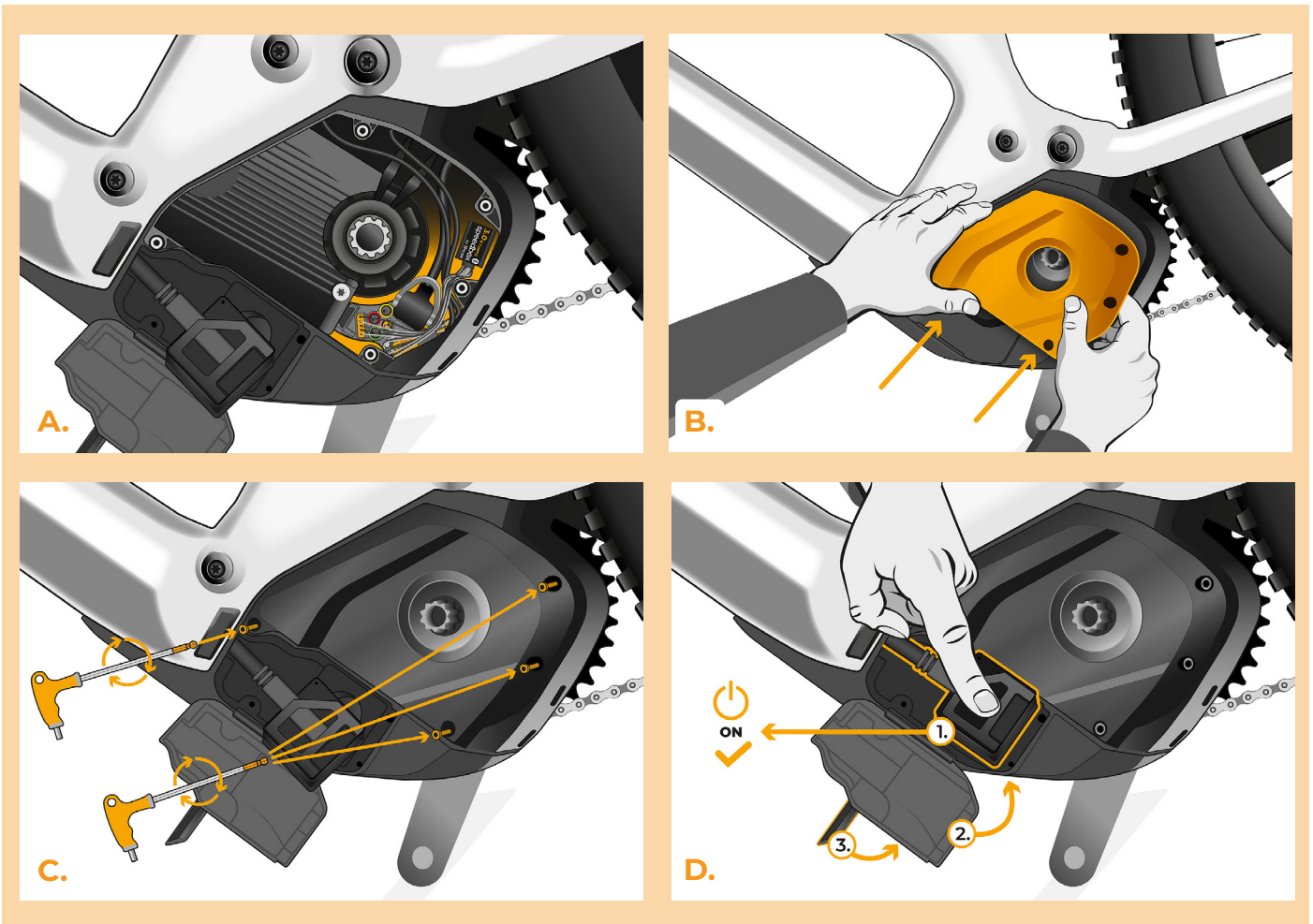
STEP 5: SpeedBox tuning installation

- A.** Replace the original connectors with the SpeedBox connectors.
- B.** Plug the e-bike connectors, disconnected from the motor, into the SpeedBox connectors and make sure that the locks on the connectors are seated properly.
- C.** Before assembling the motor, check the correct wiring as shown in the figure.



STEP 6: Motor cover assembly

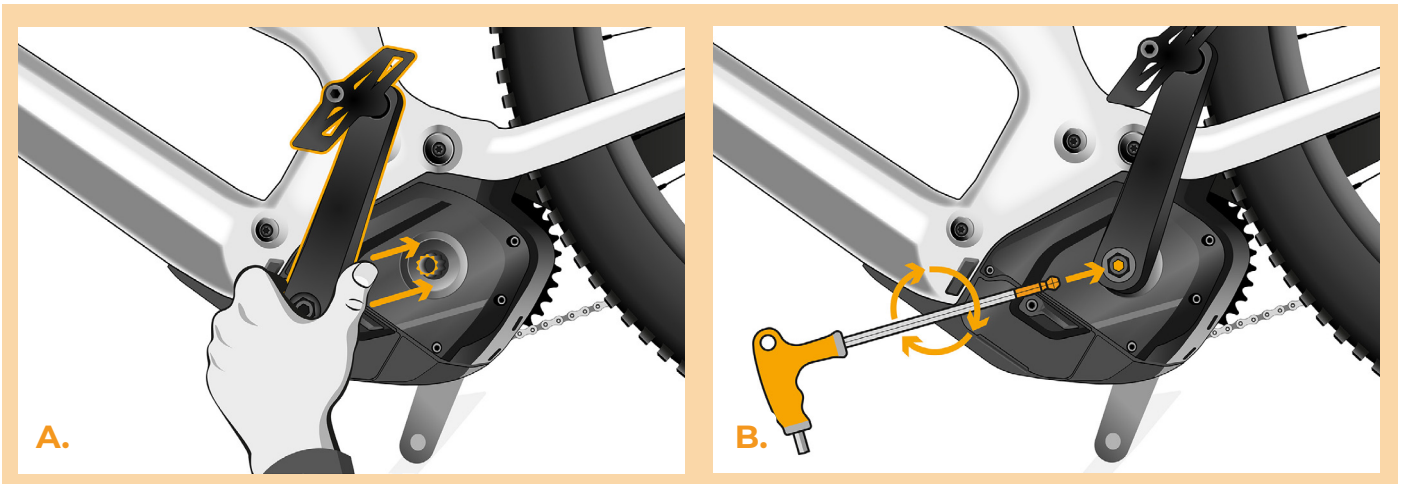
- A.** Fit the SpeedBox and all connectors and wires leading from the motor into the free space in the motor compartment.
- B.** Place the motor cover back to its original position.
- C.** Attach the motor cover with the screws using the hex key H3.
- D.** Connect the battery charger connector.



STEP 7: Crank assembly

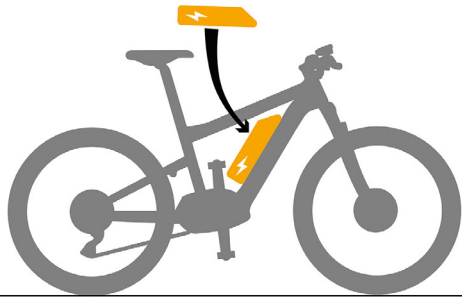
If you have removed the crank according to Step 2, install it back.

- A.** Put the crank arm back to the central axis of the e-bike motor.
- B.** Screw the crank bolt into the crank arm and tighten it with the hex key H8.



STEP 8: Tuning function check

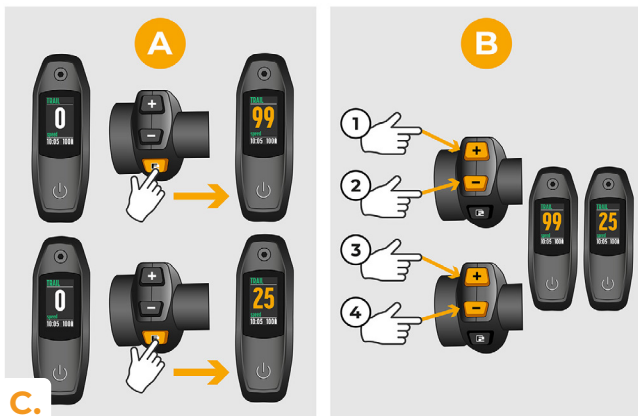
- A.** Place the battery back into the e-bike.
- B.** Turn the e-bike on.
- C.** You will activate/deactivate tuning by brief activation of the WALK function or by switching between two assistance modes twice (+-+).
- D.** Spin the rear wheel and make sure the rear wheel speed is shown on the e-bike display.



A.



B.



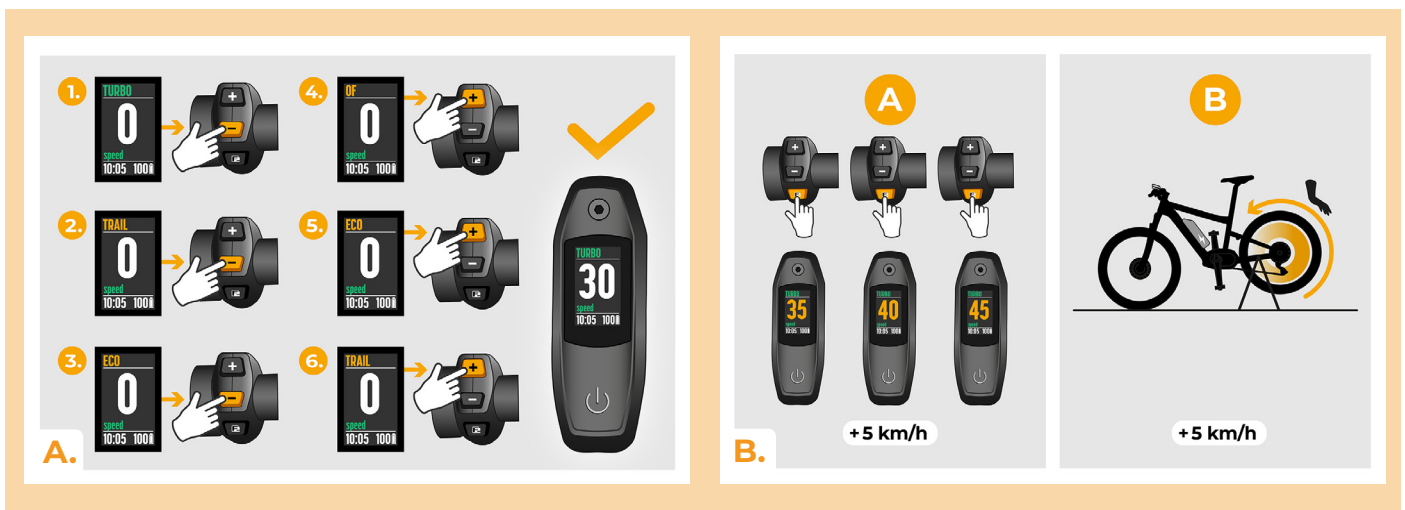
C.



D.

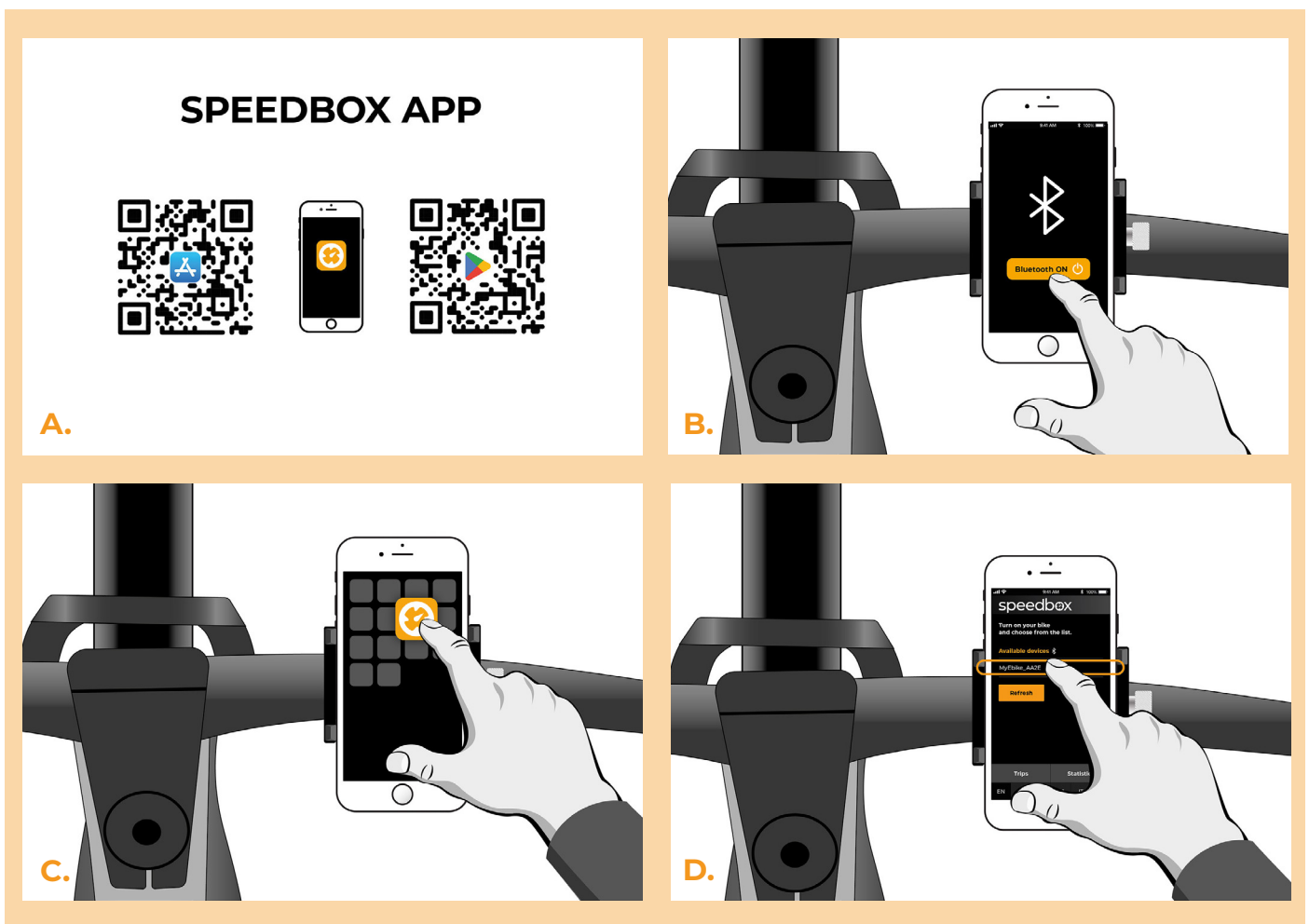
STEP 9: Setting the speed limit

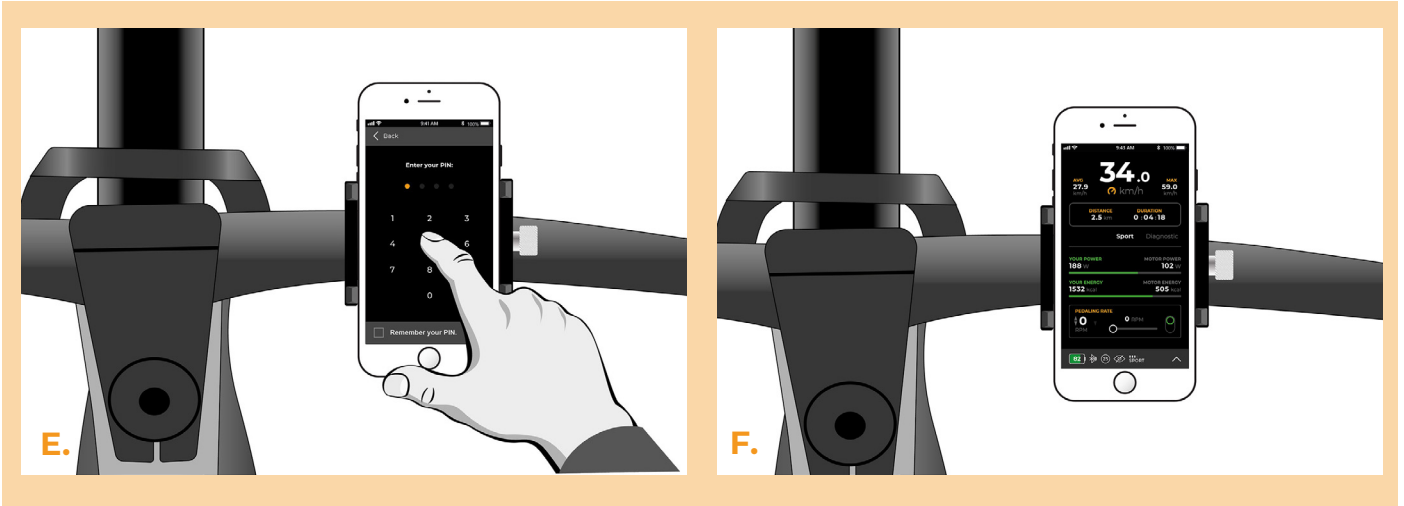
- A.** Set TURBO mode. Switch between the assistance modes briefly in the following order TURBO > TRAIL > ECO > OFF > ECO > TRAIL > TURBO., i.e., go three levels down and three levels up. The current speed limit will be displayed.
- B.** Set the maximum speed limit by activating the WALK function briefly or by turning the rear wheel 360°. With each brief activation of the WALK function or turning of the wheel, the limit increases by 5 km/h. The last displayed limit is saved after five seconds of inactivity.



STEP 10: Pairing SpeedBox with the SpeedBox App

- A.** Install the SpeedBox App from Google Play or App Store.
- B.** Turn on Bluetooth on your phone.
- C.** Open the SpeedBox App. Enable location services if prompted.
- D.** Select the device MyEbike_XXXX. If you do not see it in the list, click on the “Refresh” button and, if necessary, make sure that:
 1. Your e-bike is switched on.
 2. You are not further than 5 m from your e-bike.
 3. You have Bluetooth turned on on your mobile phone.
 4. You have enabled location services for the SpeedBox App.
- E.** Choose and confirm your PIN and service password.
- F.** Now you can fully enjoy the SpeedBox App (control tuning, monitor riding data, and information about motor performance and energy consumption, you can set the speed limit, etc.).





www.speedbox-tuning.en

Ebike Electronic s.r.o.

Rybna 716/24 | 110 00 Praha 1 | Czech Republic | ID: 05553555 | VAT: CZ05553555



