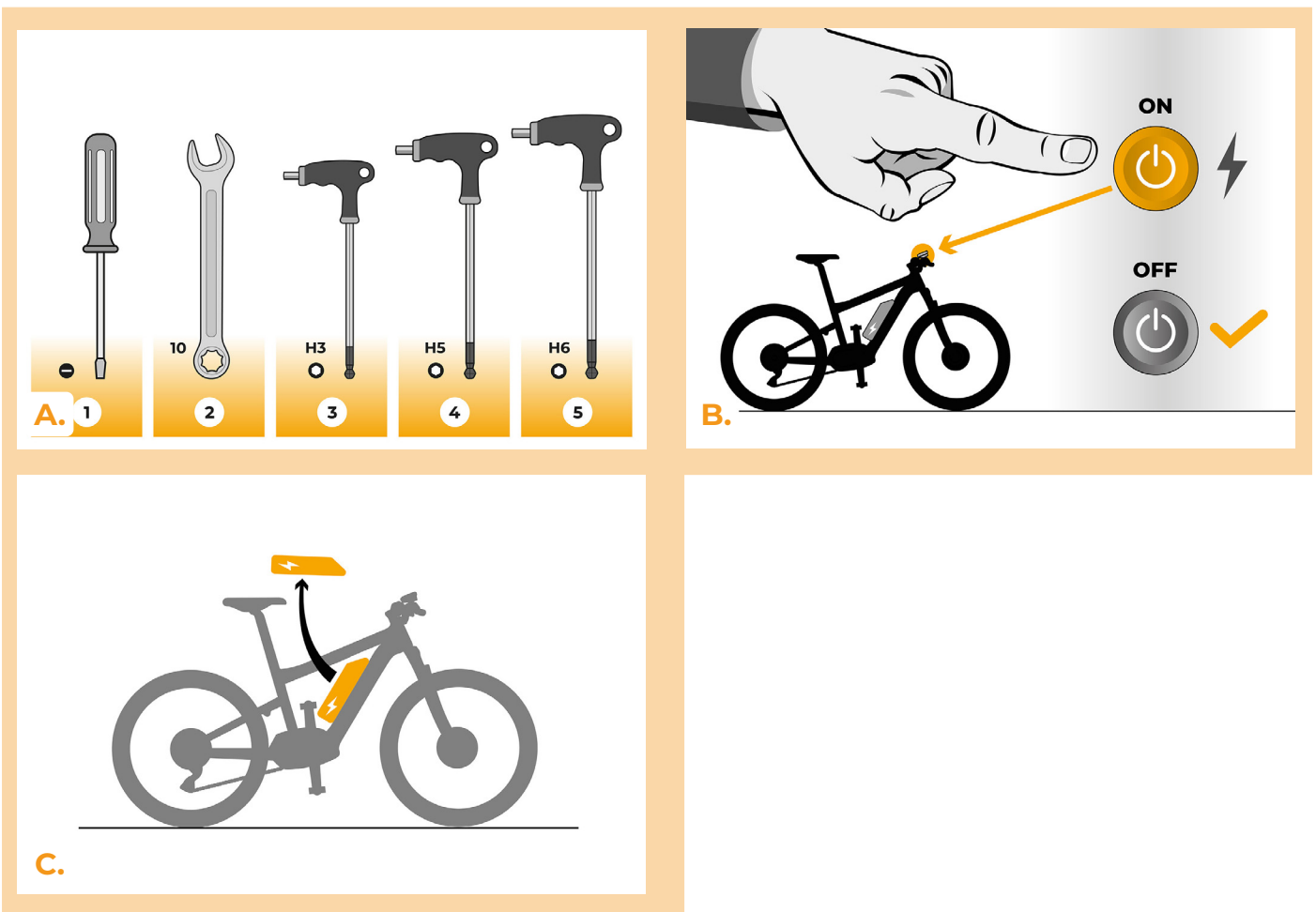


SpeedBox 3.0 B.Tuning for Oli

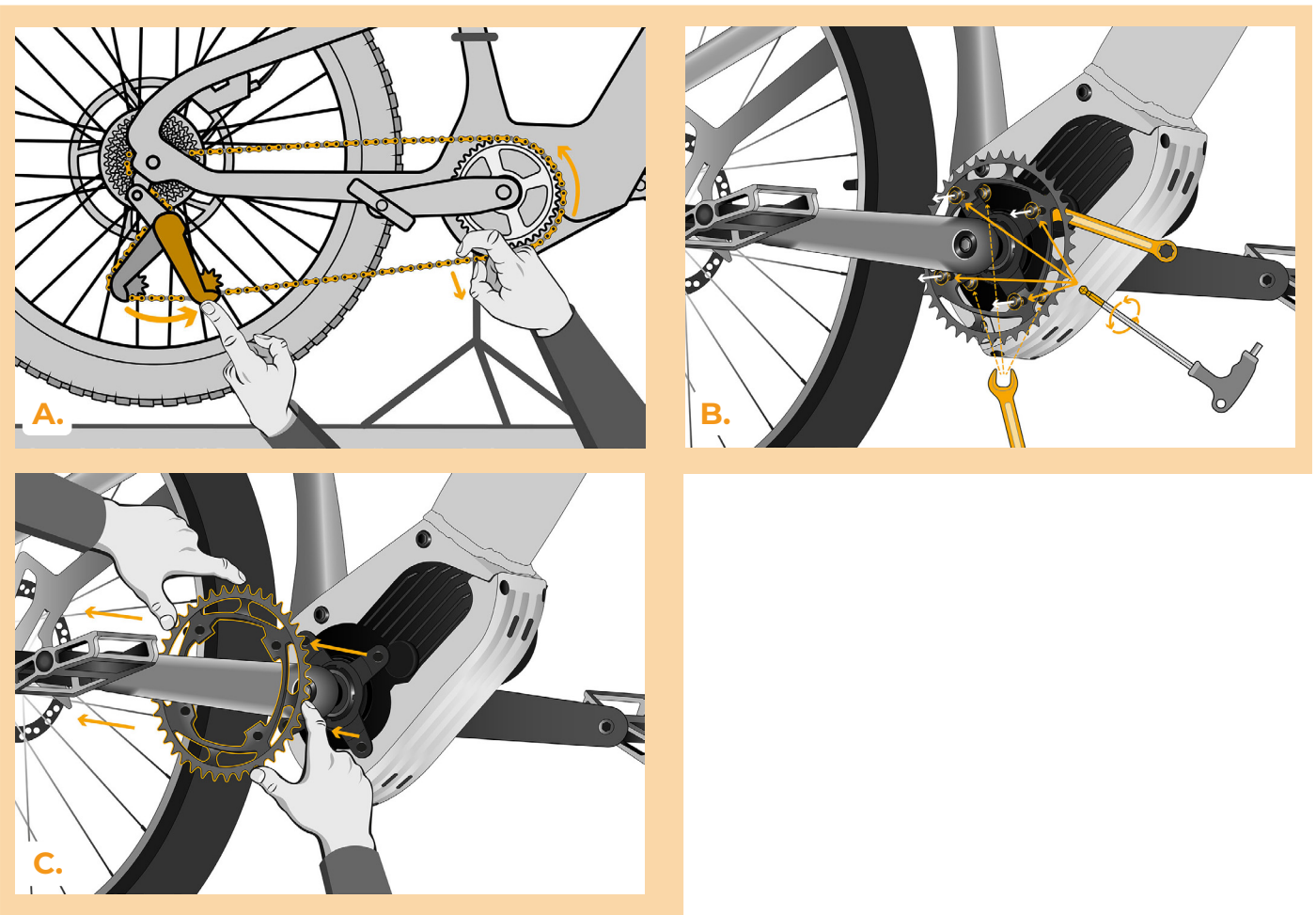
STEP 1: Preparation for installation

- A.** Prepare the following tools:
1. Precision slotted screwdriver
 2. Wrench 10 mm
 3. Hex Key H3
 4. Hex Key H5
 5. Hex Key H6
- B.** Turn off the e-bike.
- C.** Remove the battery from the e-bike according to the manufacturer's manual.



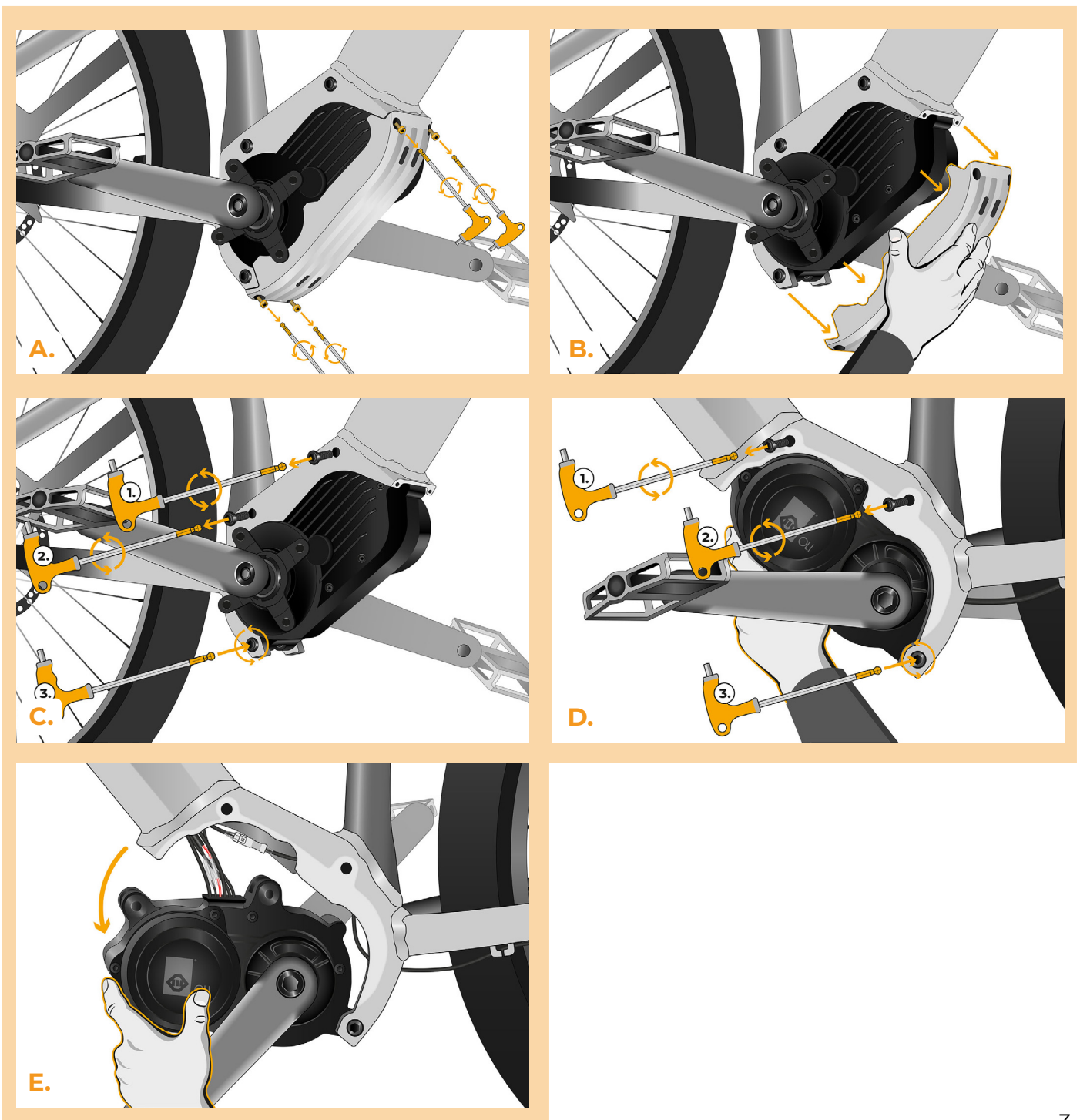
STEP 2: Chainring Disassembly

- A. Remove the chain.
- B. Unscrew the screws holding the chainring (with the hex key H5 and the 10 mm wrench).
- C. Remove the chainring.



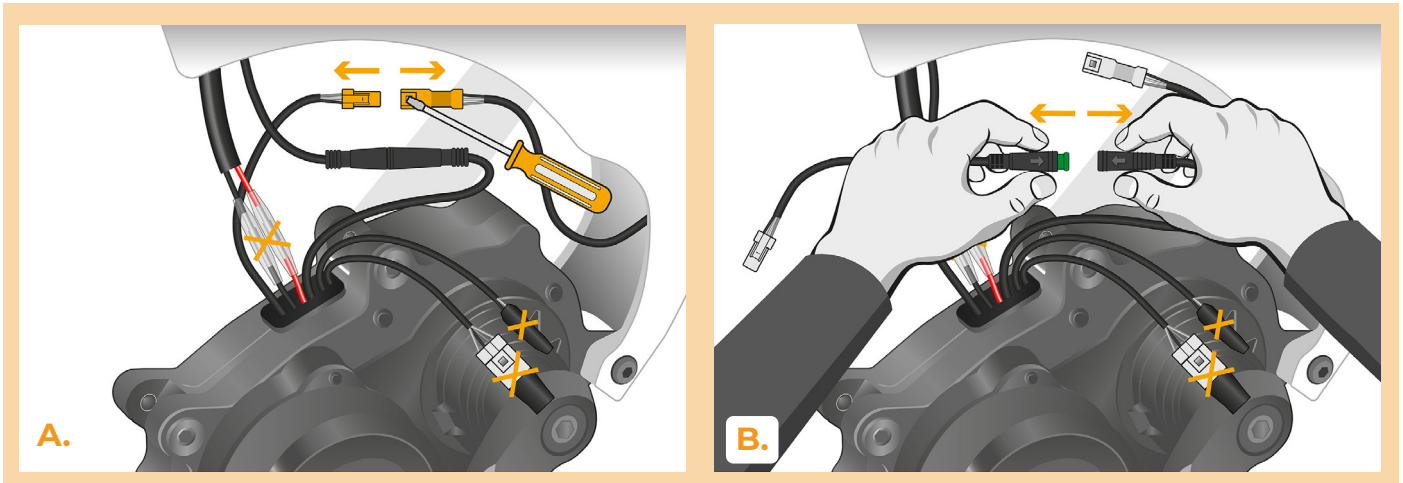
STEP 3: Motor removal

- A.** Unscrew the five screws holding the motor cover with the hex key H3.
- B.** Remove the motor cover.
- C.** Unscrew the screws holding the motor in the frame using the hex key H6. Remove the top two screws completely, leave the third screw near the rear wheel loose.
- D.** Do the same on the other side of the e-bike. Make sure to hold the motor so that it does not fall out.
- E.** Carefully tilt the motor out of the e-bike frame to access the motor connectors and wiring.



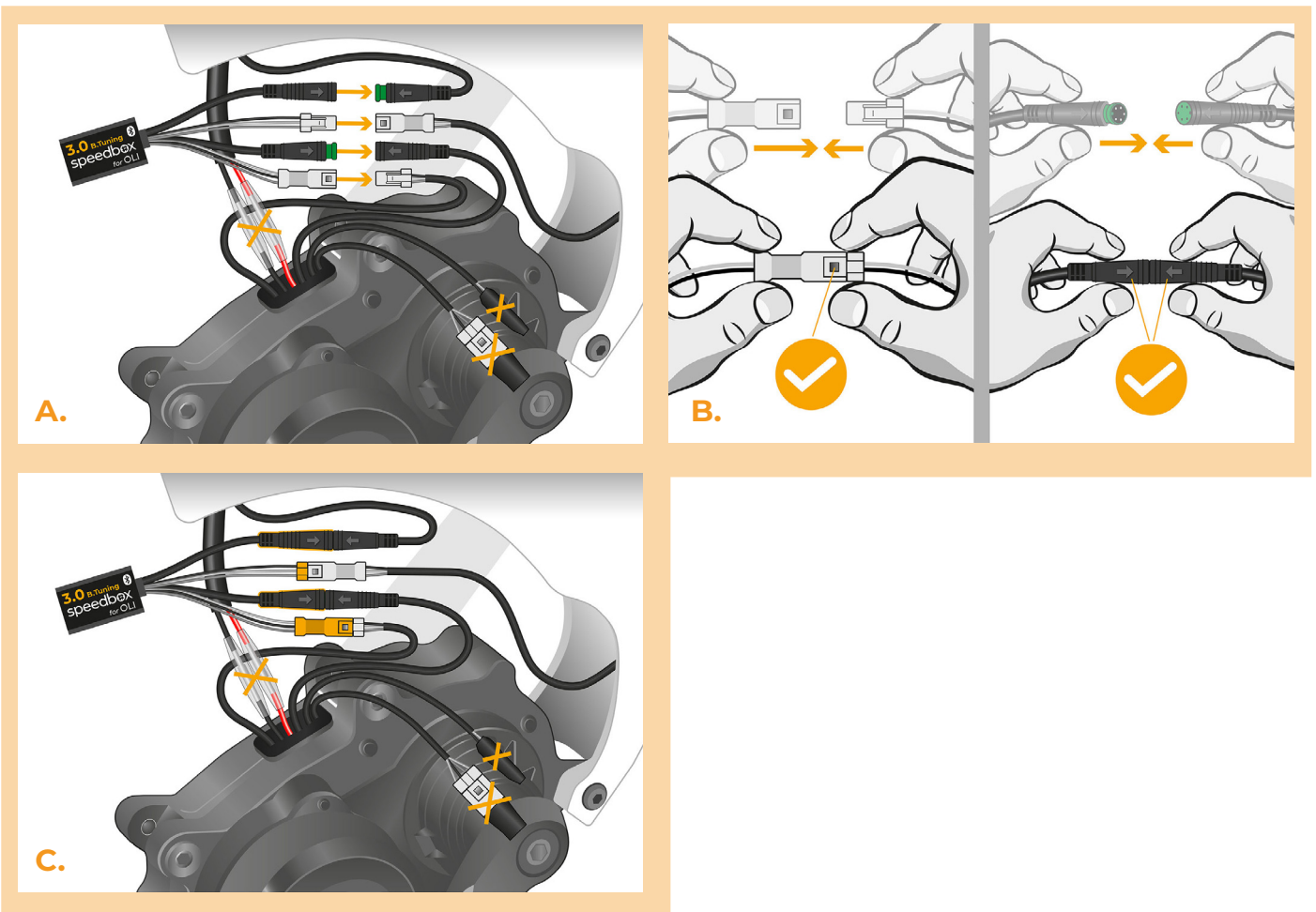
STEP 4: Disconnecting the connectors from the motor

- A. Disconnect the speed sensor connector with the slotted screwdriver.
- B. Disconnect the cable connector leading from the motor to the display.



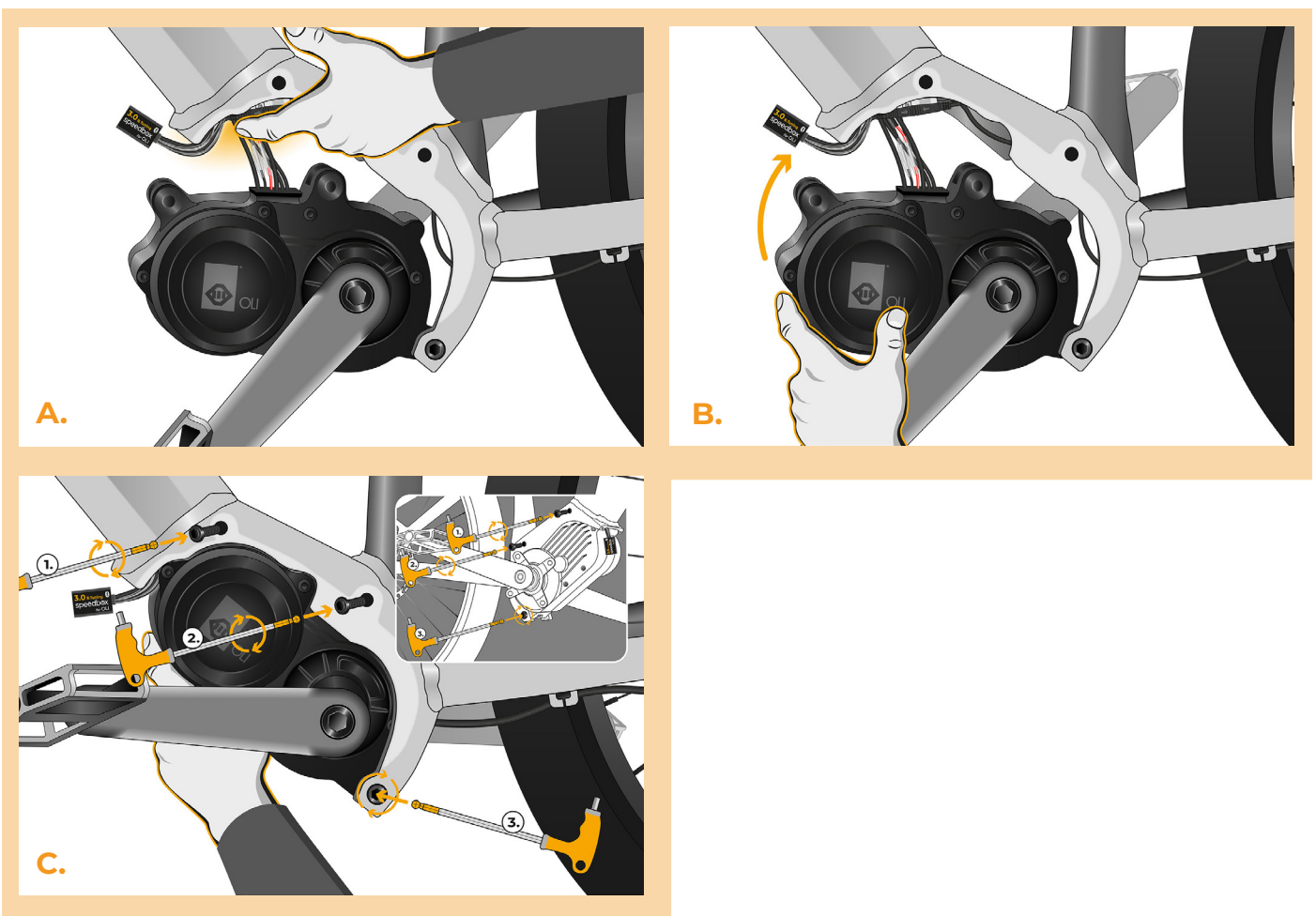
STEP 5: SpeedBox tuning installation

- A.** Plug SpeedBox into the disconnected connectors (step 4).
- B.** Make sure that the locks on the connectors are seated properly.
- C.** Before reattaching the motor cover, check the correct wiring as shown in the figure.



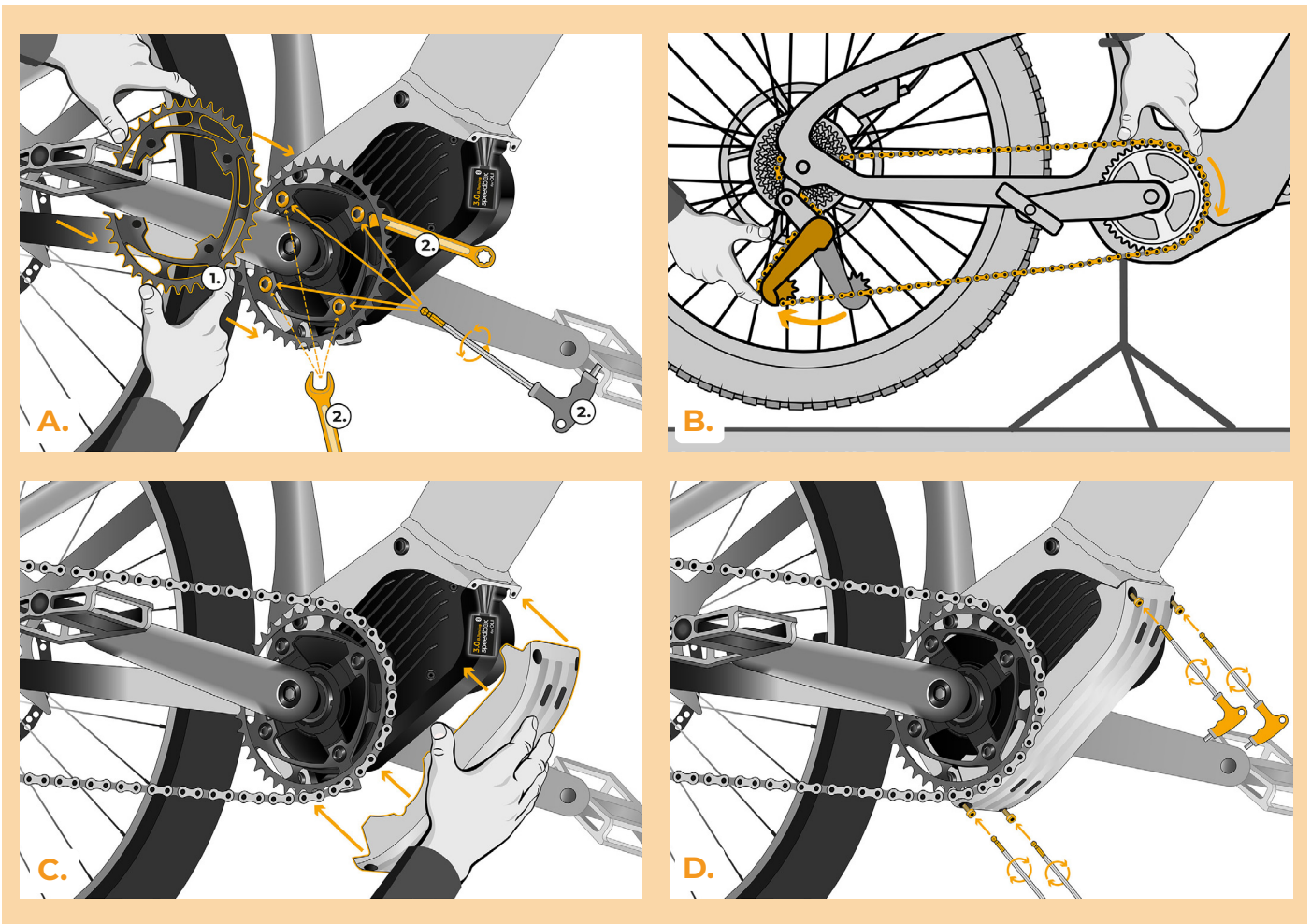
STEP 6: Motor placing

- A.** Place the connectors and wiring leading from the motor back into the free space in the e-bike frame. SpeedBox should be placed out of the frame so that the metal frame of the e-bike does not block the Bluetooth signal.
- B.** Return the motor to its original position and be careful not to accidentally damage the cables.
- C.** Screw in the screws holding the motor in the frame and tighten well with the hex key H5 on both sides of the e-bike frame.



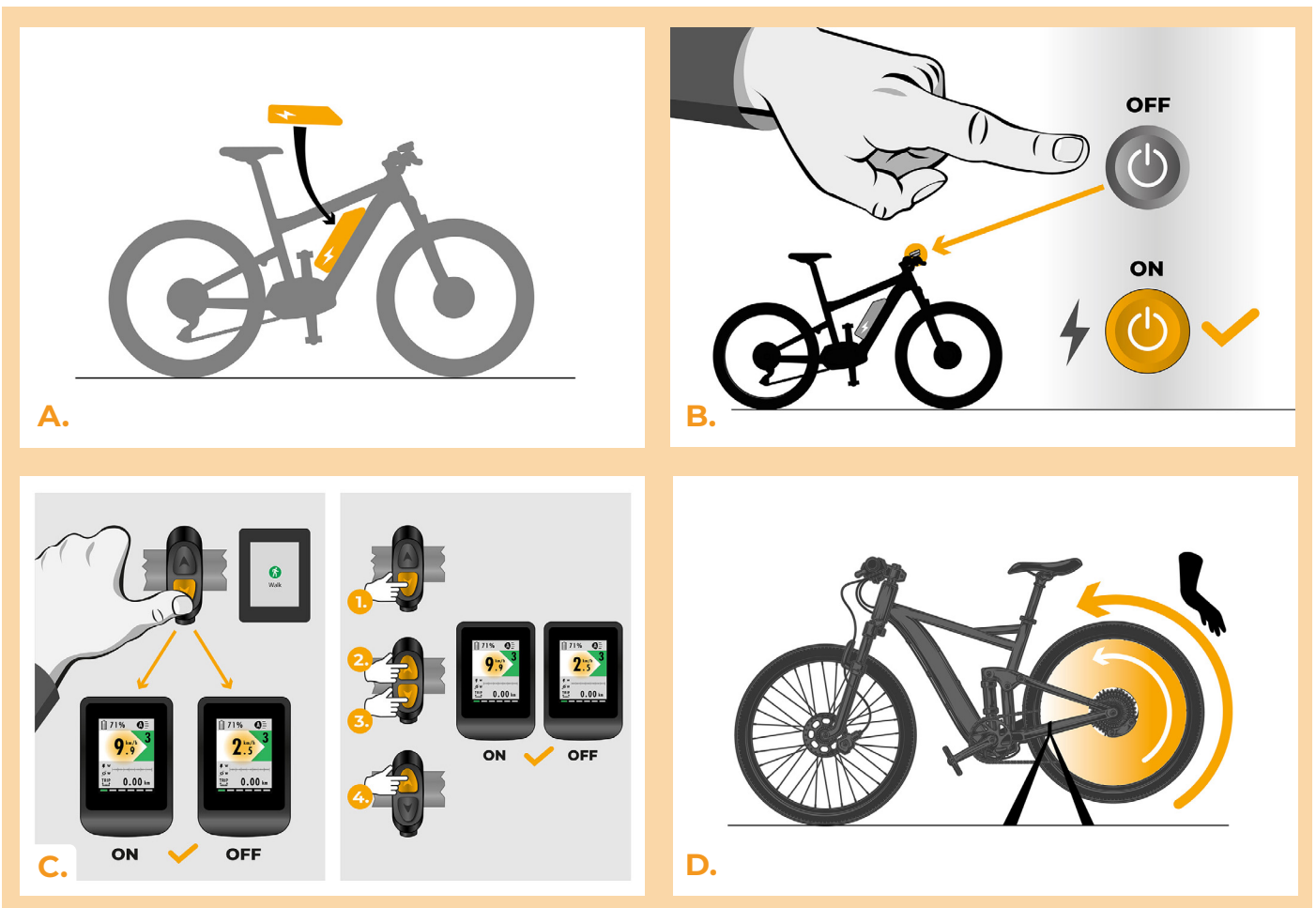
STEP 7: Assembly of the chainring and motor cover

- A.** Put the chainring back in place and screw it in with the hex key H5 and the 10 mm wrench.
- B.** Put the chain back on the chainring.
- C.** Place the motor cover back in its original position.
- D.** Screw in the screws with the hex key H3.



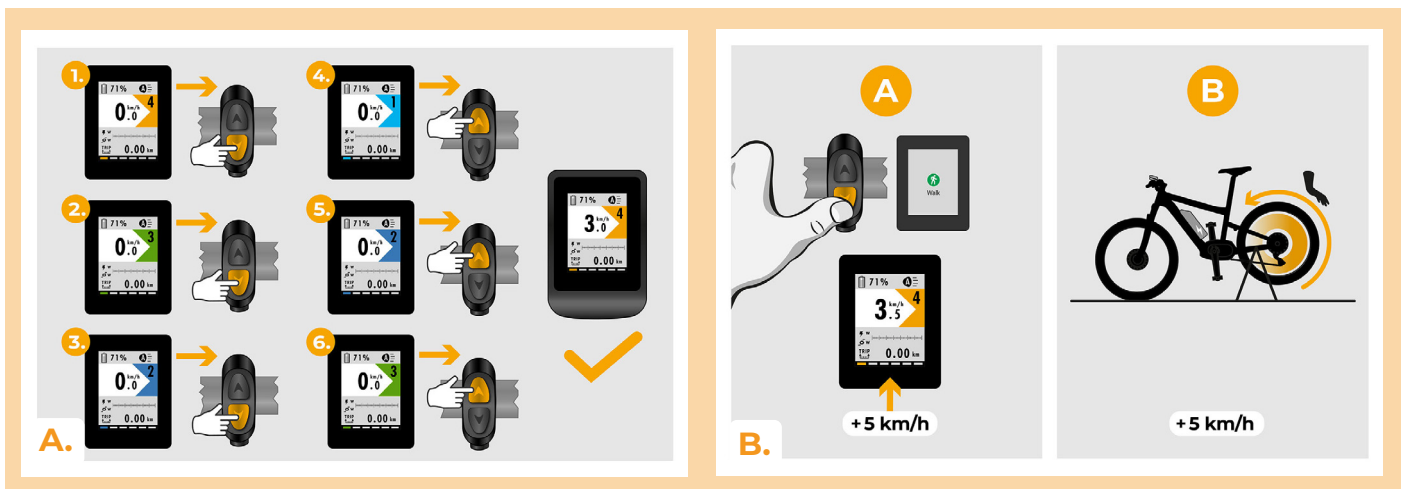
STEP 8: Tuning function check

- A.** Place the battery back into the e-bike.
- B.** Turn the e-bike on.
- C.** You will activate/deactivate tuning by brief activation of the WALK function or by switching between two assistance modes twice (+ - + -).
- D.** Spin the rear wheel and make sure the rear wheel speed is shown on the e-bike display.



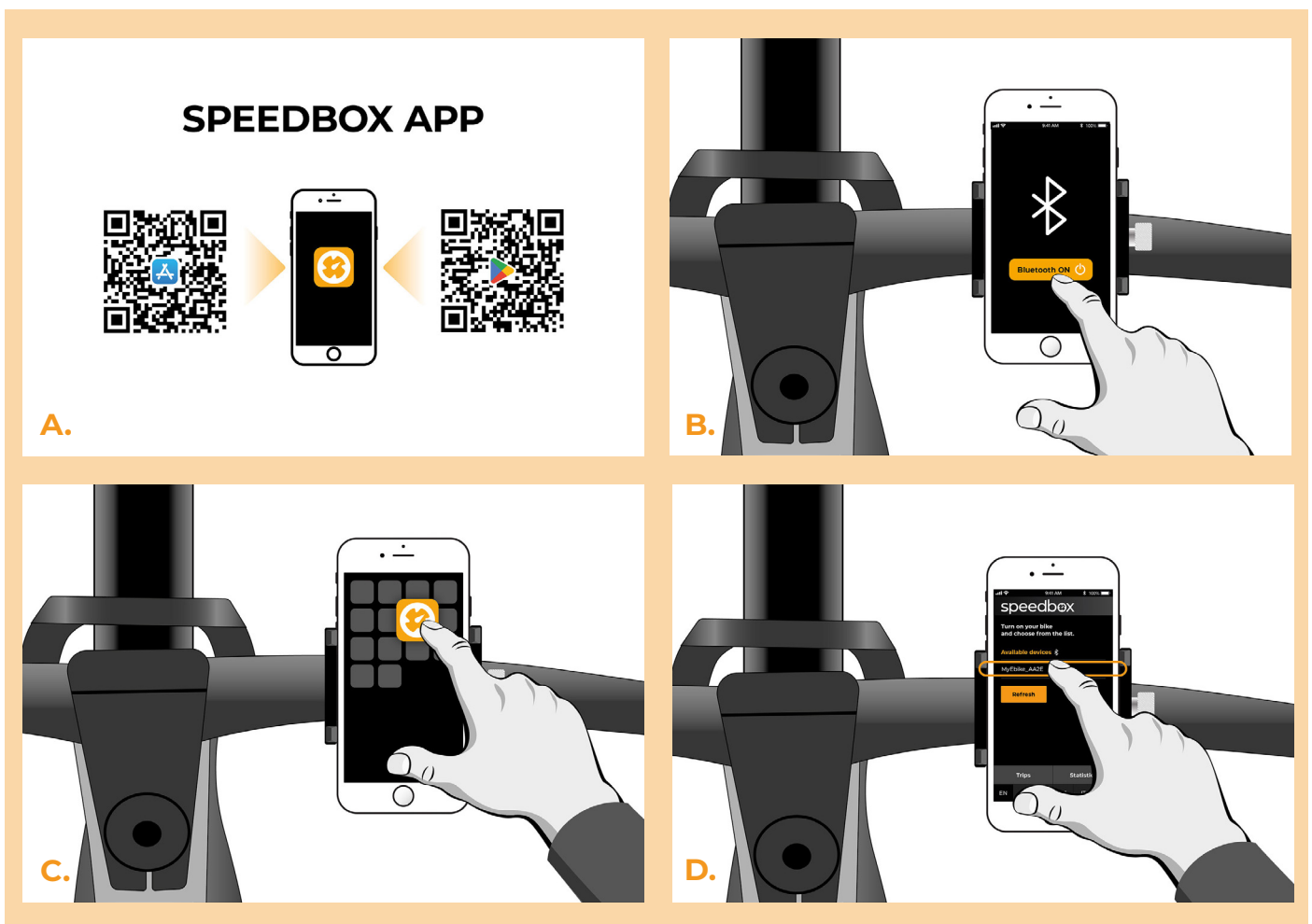
STEP 9: Setting the speed limit

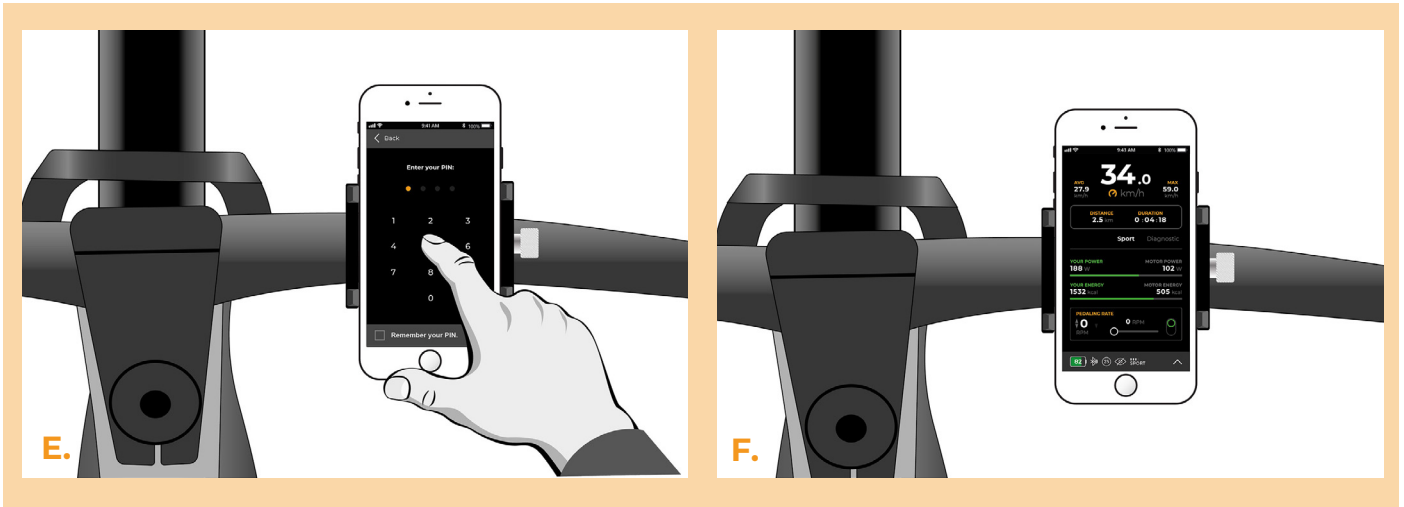
- A.** To set the maximum speed limit, switch the modes: - - - + + +. The current speed limit will be displayed.
- B.** Set the maximum speed limit by activating the WALK function briefly or by turning the rear wheel 360°. With each brief activation of the WALK function or turning of the wheel, the limit increases by 5 km/h. The last displayed limit is saved after five seconds of inactivity.



STEP 10: Pairing SpeedBox with the SpeedBox App

- A.** Install the SpeedBox App from Google Play or App Store.
- B.** Turn on Bluetooth on your phone.
- C.** Open the SpeedBox App. Enable location services if prompted.
- D.** Select the device MyEbike_XXXX. If you do not see it in the list, click on the “Refresh” button and, if necessary, make sure that:
 1. Your e-bike is switched on.
 2. You are not further than 5 m from your e-bike.
 3. You have Bluetooth turned on on your mobile phone.
 4. You have enabled location services for the SpeedBox App.
- E.** Choose and confirm your PIN and service password.
- F.** Now you can fully enjoy the SpeedBox App (control tuning, monitor riding data, and information about motor performance and energy consumption, you can set the speed limit, etc.).





www.speedbox-tuning.com

Ebike Electronic s.r.o.

Rybna 716/24 | 110 00 Praha 1 | Czech Republic | ID: 05553555 | VAT: CZ05553555

